

Corporate Governance Committee – 22 March 2007

UPDATE ON MPS HEALTH AND SAFETY PERFORMANCE

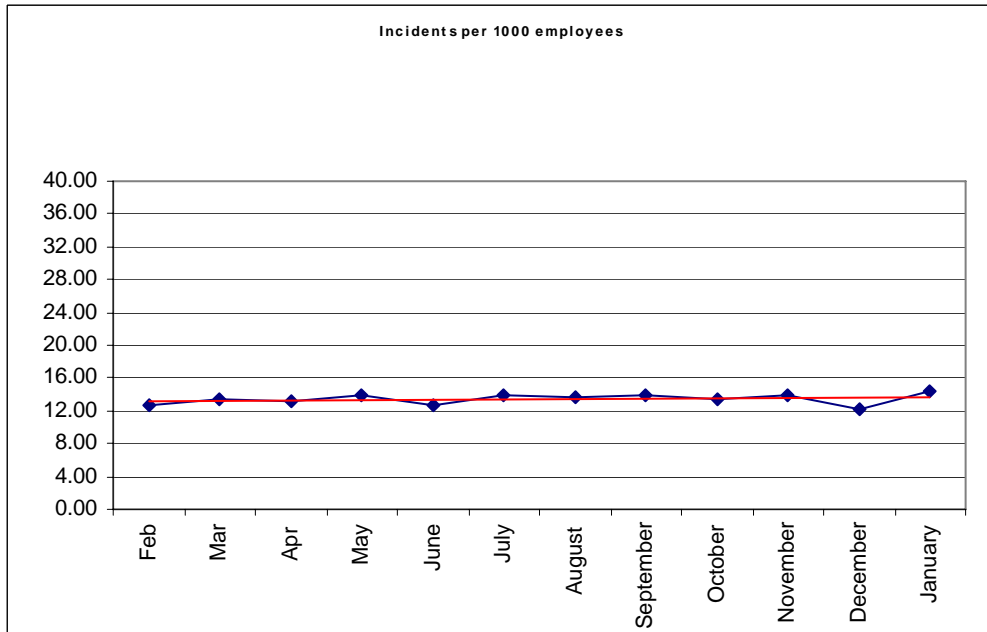


Figure 1: Total number of incidents recorded

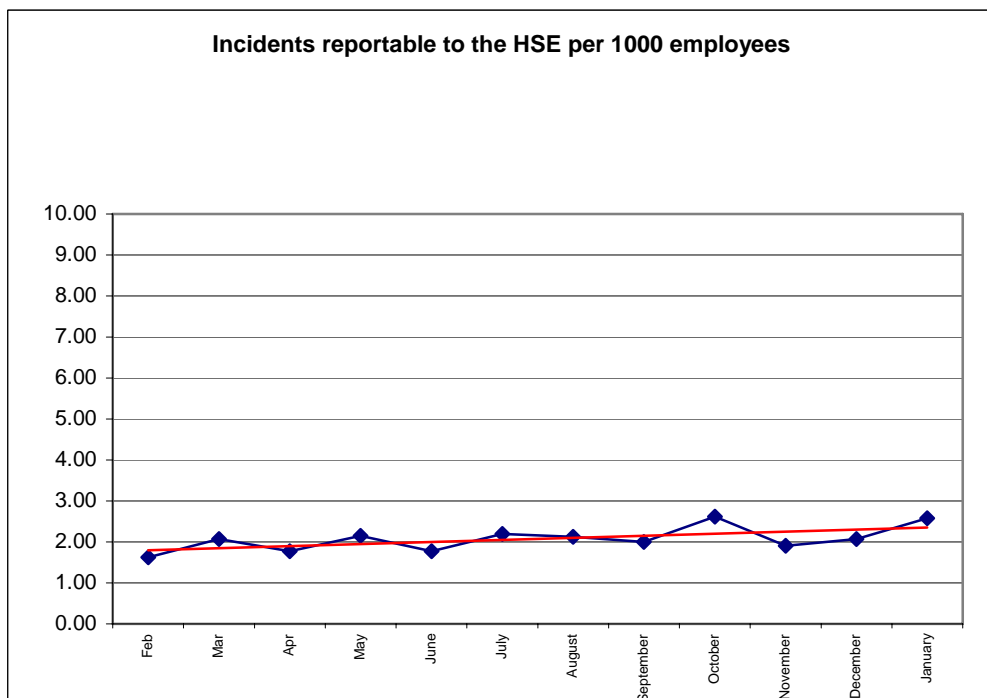
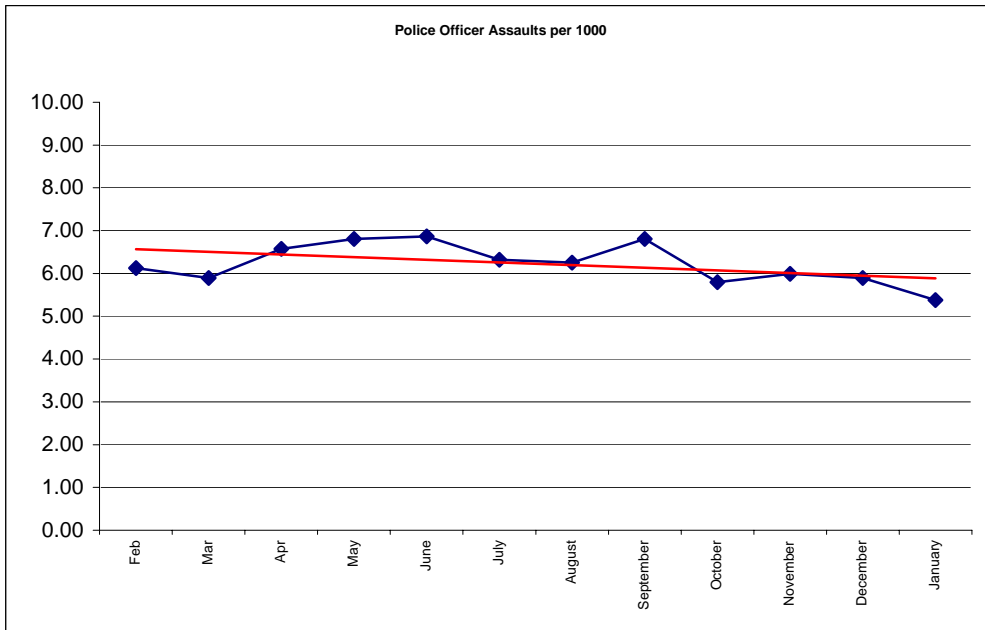
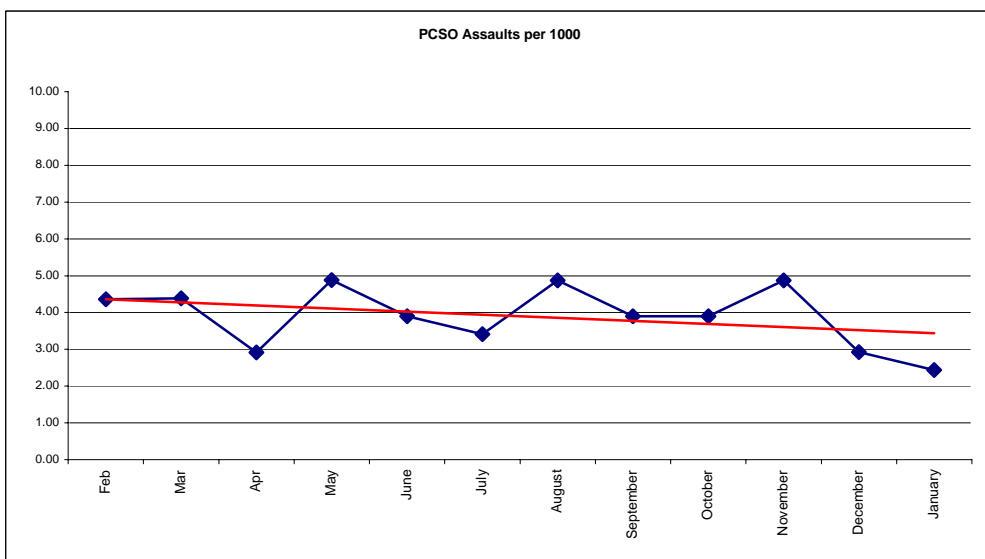


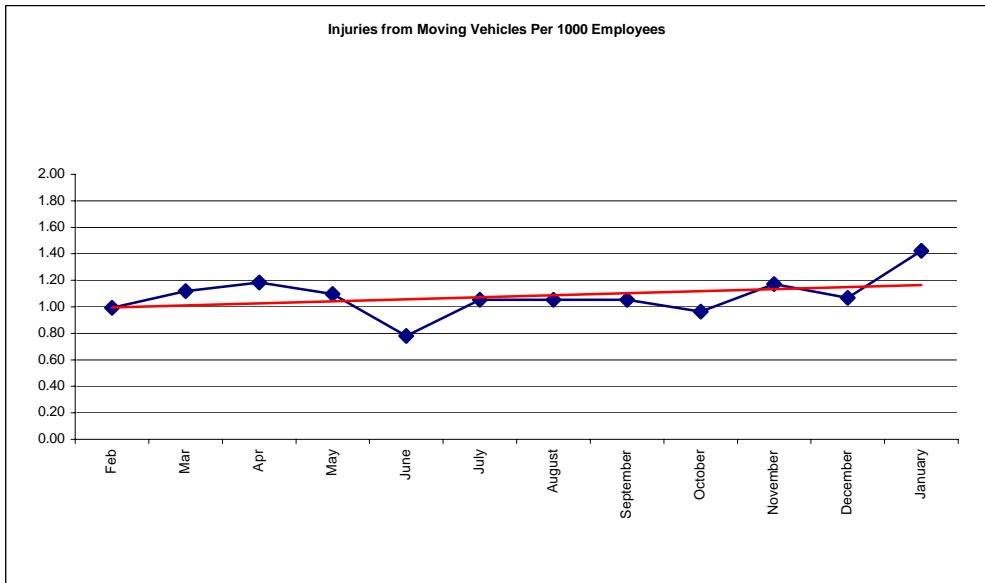
Figure 2: Incidents reportable to HSE per thousand employees



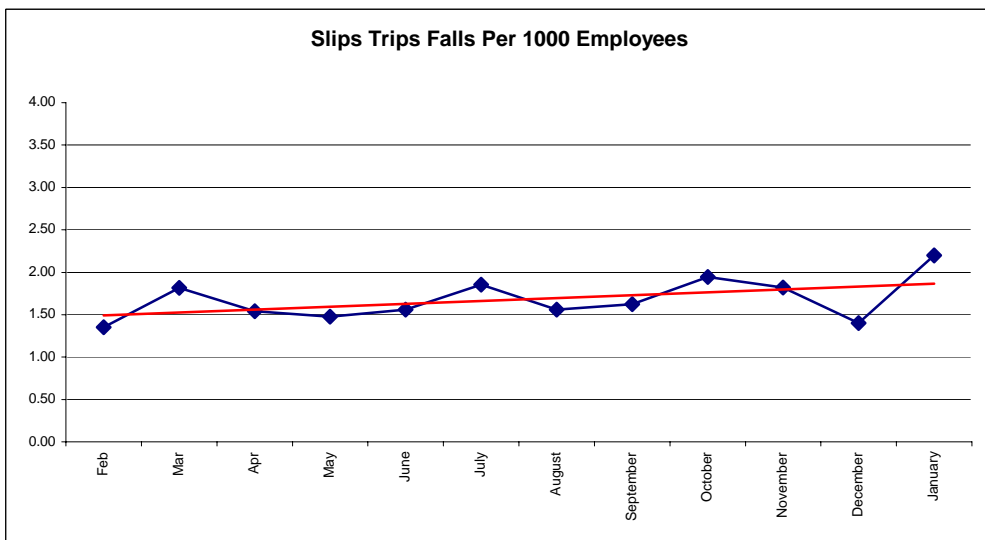
**Figure 3: Police Officer Assaults Per Thousand Officers**



**Figure 4: PCSO assaults per thousand officers**



**Figure 5: Injuries from moving vehicles per thousand employees**



**Figure 6: Injuries from slips, trips and falls per thousand employees**