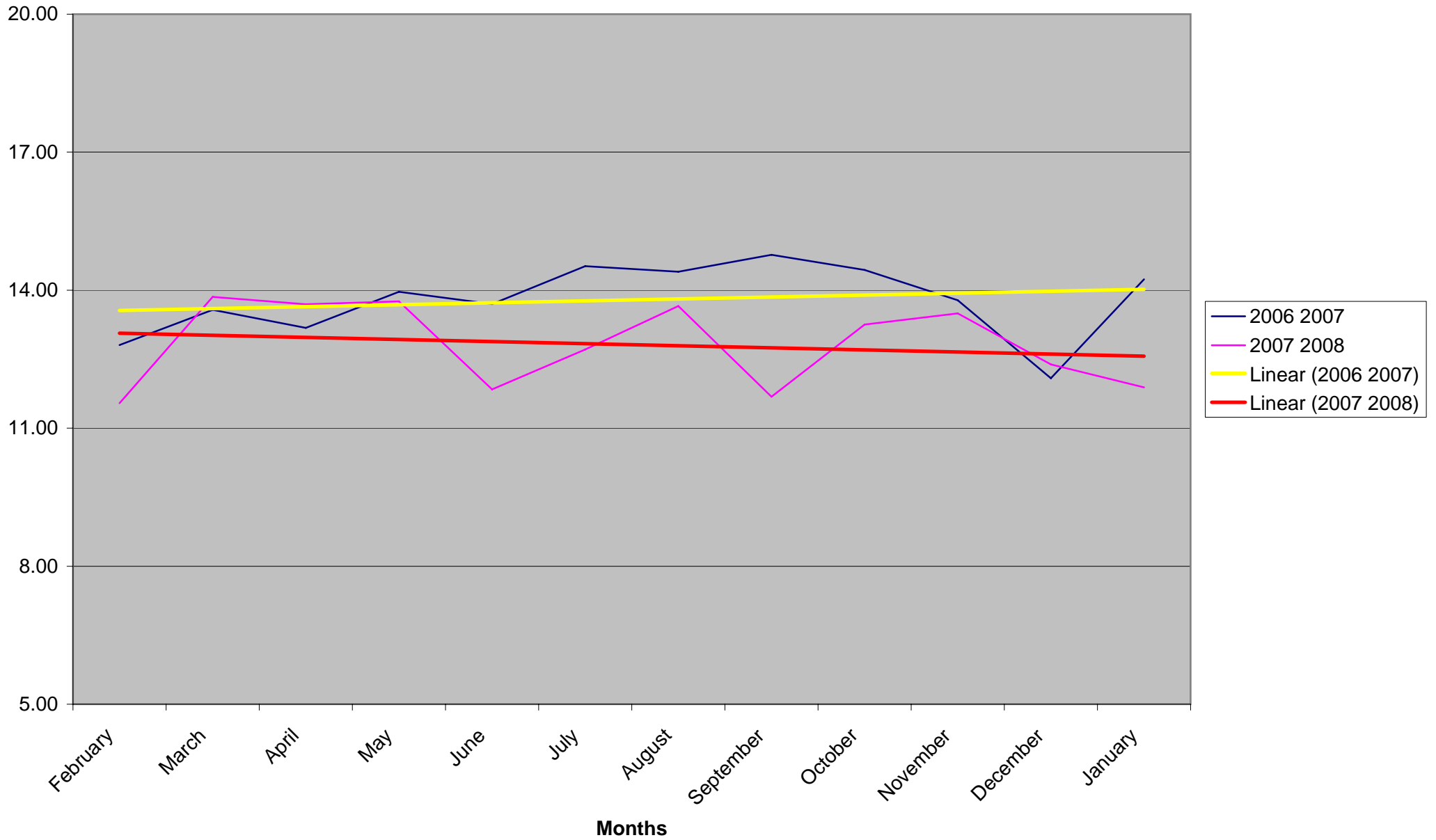
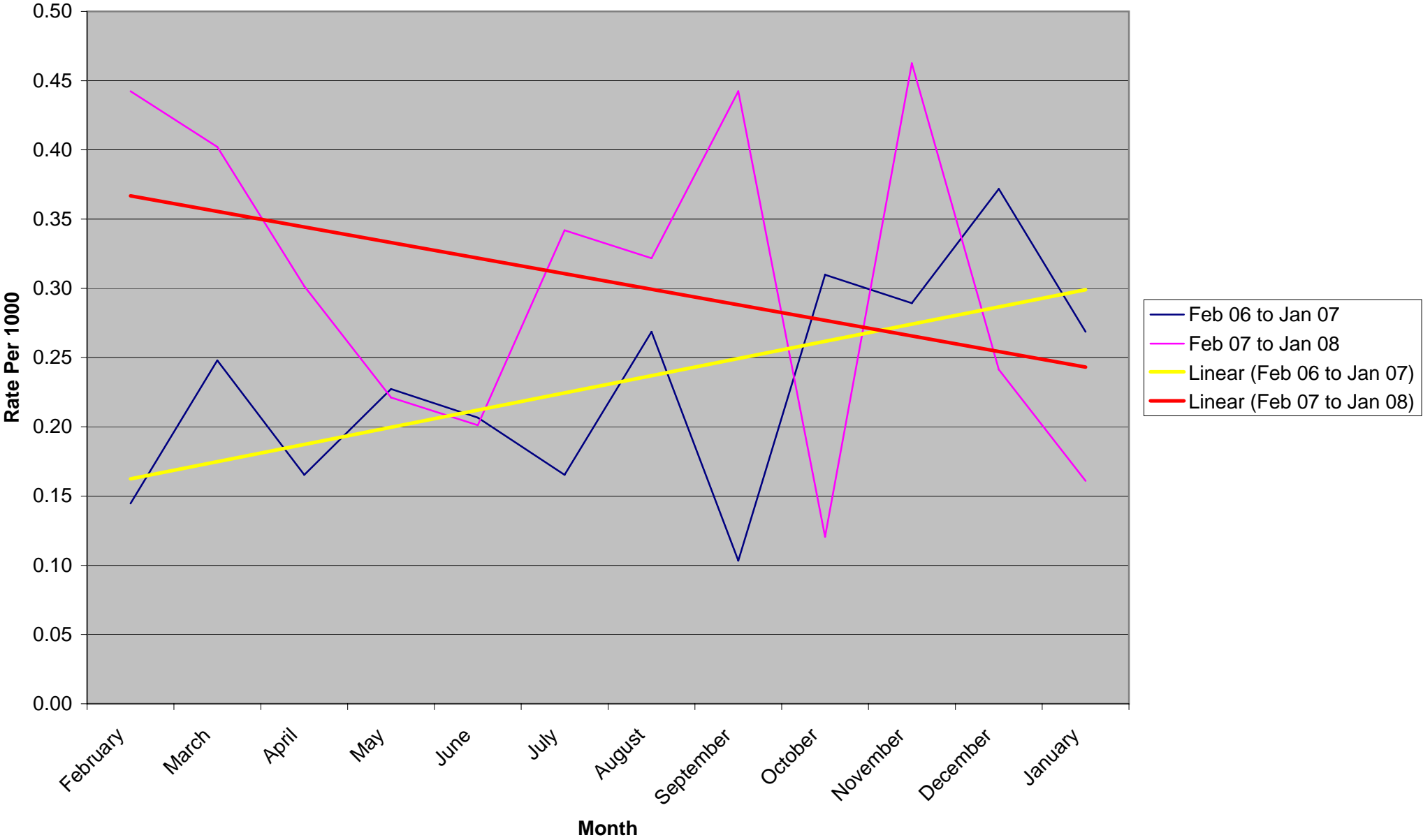


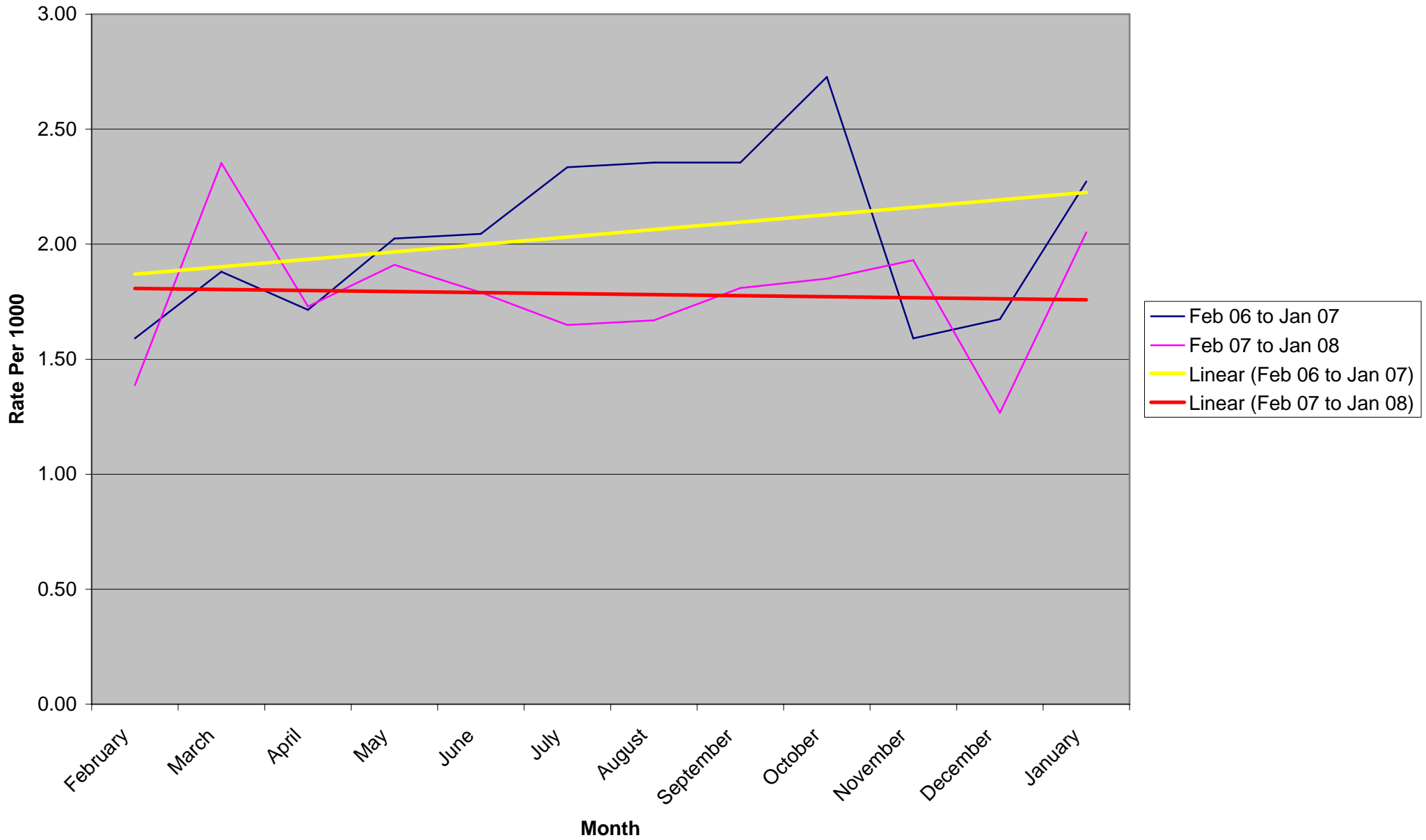
Annex 1 - Total MetAIR Reports By Month per 1000 employees for the reporting periods February 2006 to January 2007 and February 2007 to January 2008



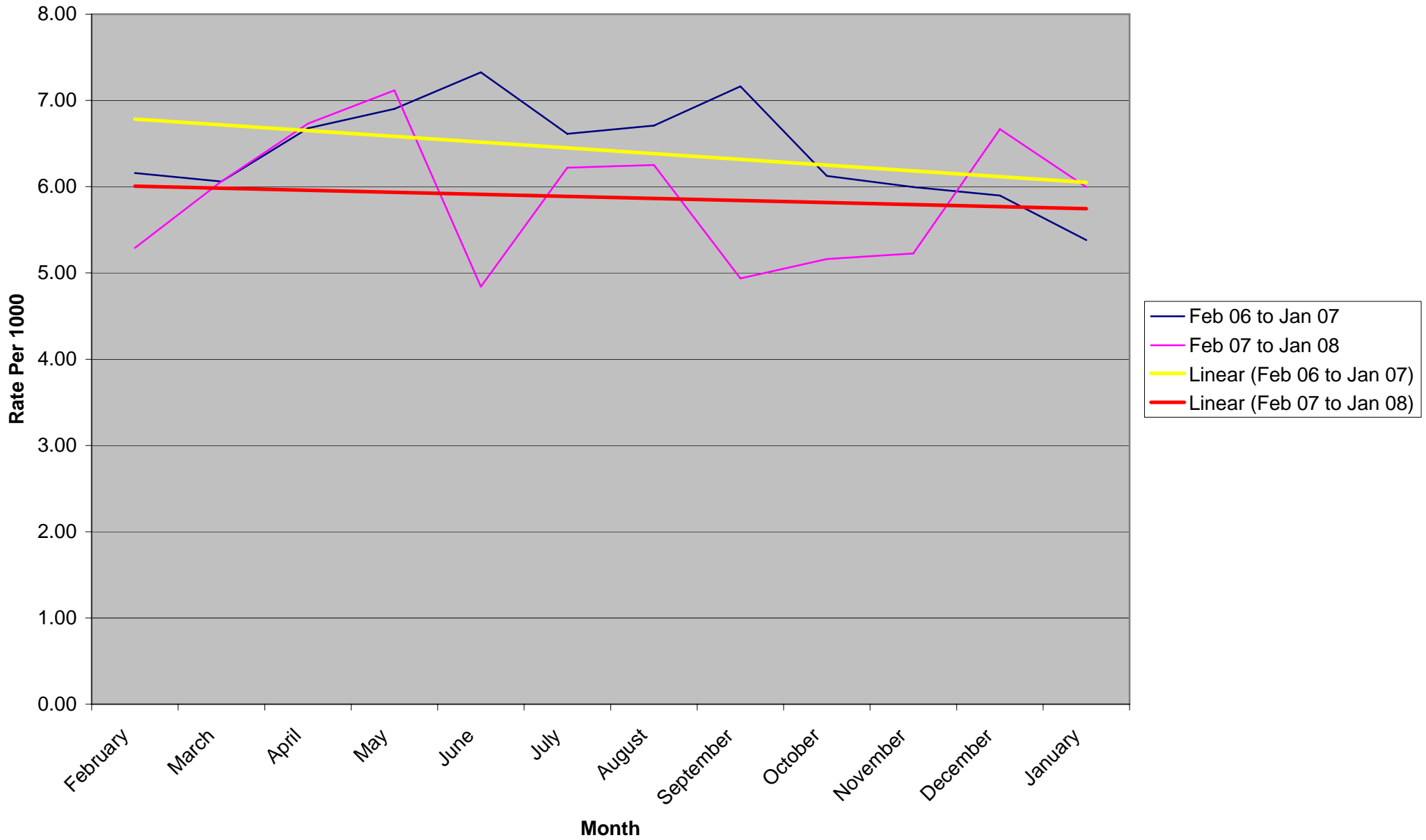
Annex 2 - Major Injuries per 1000 employees for the reporting periods February 2006 to January 2007 and February 2007 to January 2008



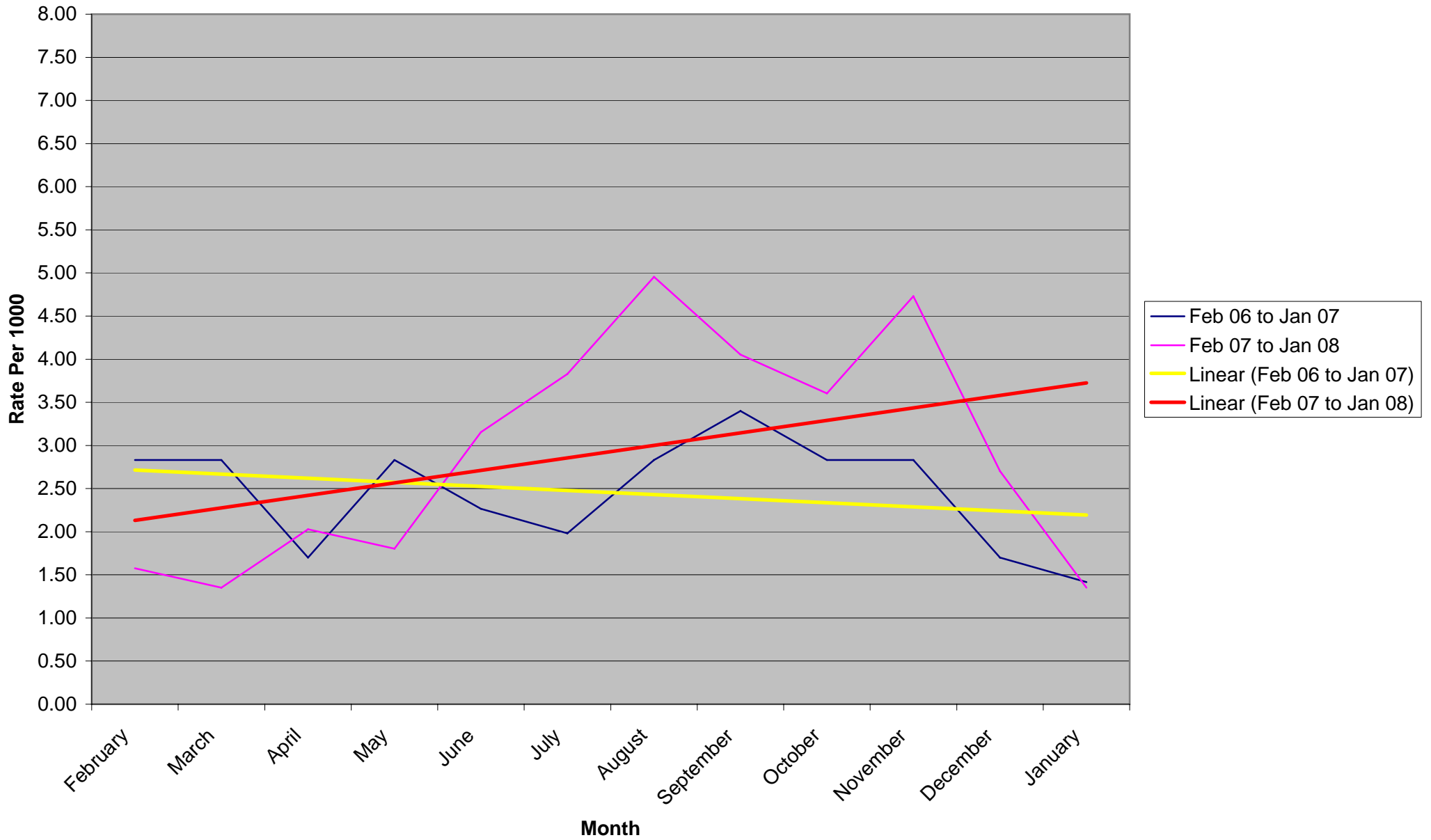
**Annex 3 - Over 3 Day Injuries per 1000 employees for the reporting periods February 2006 to January 2007
and February 2007 to January 2008**



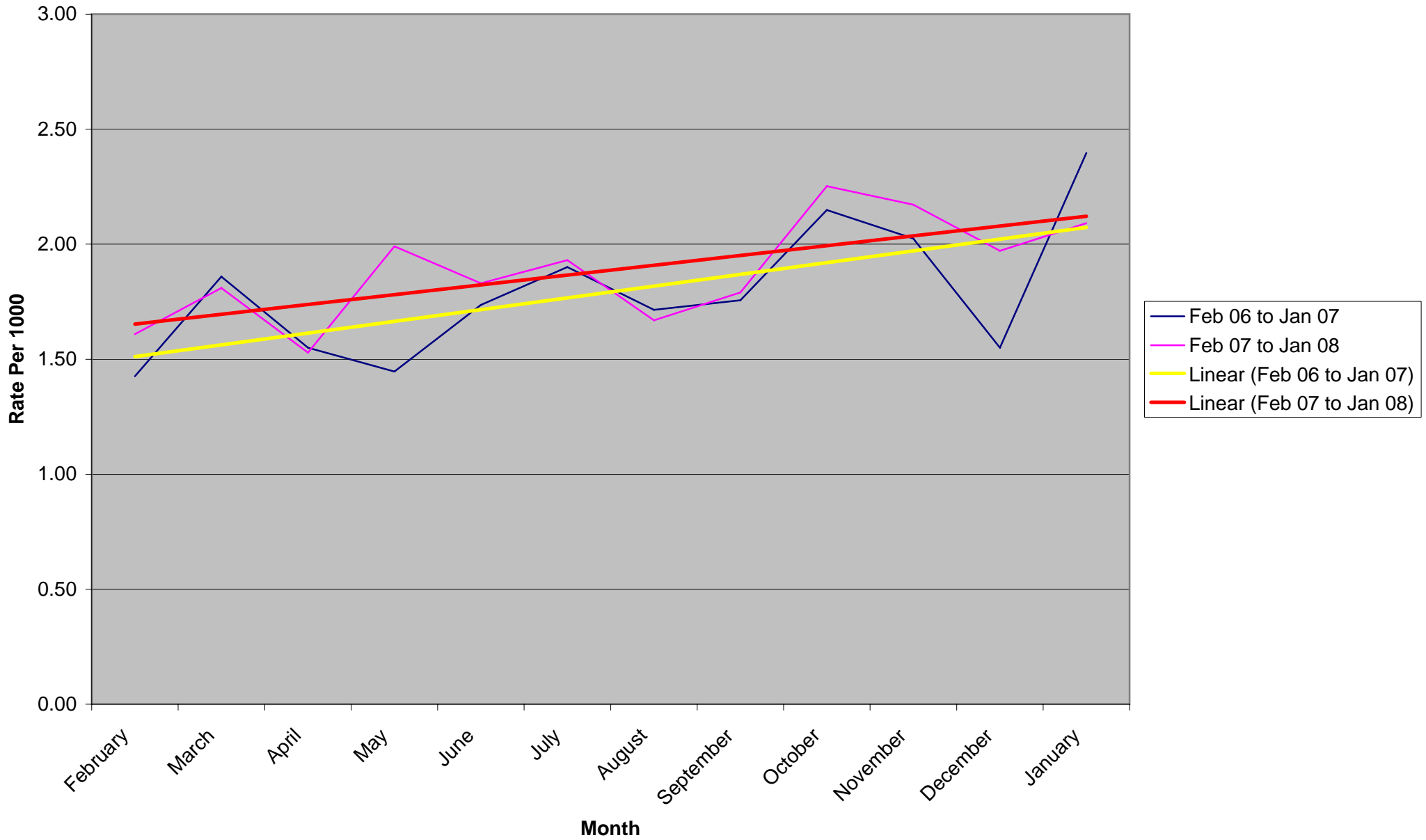
Annex 4 - Physical Assaults on Police Officers per 1000 employees for the reporting periods February 2006 to January 2007 and February 2007 to January 2008



Annex 5 - Physical Assaults on PCSO's per 1000 employees for the reporting periods February 2006 to January 2007 and February 2007 to January 2008



Annex 6 - Slipped Tripped or Fell on the Same Level or from Height per 1000 employees for the reporting periods February 2006 to January 2007 and February 2007 to January 2008



Annex 7 - Hit By a Moving Vehicle per 1000 employees for the reporting periods February 2006 to January 2007 and February 2007 to January 2008

