

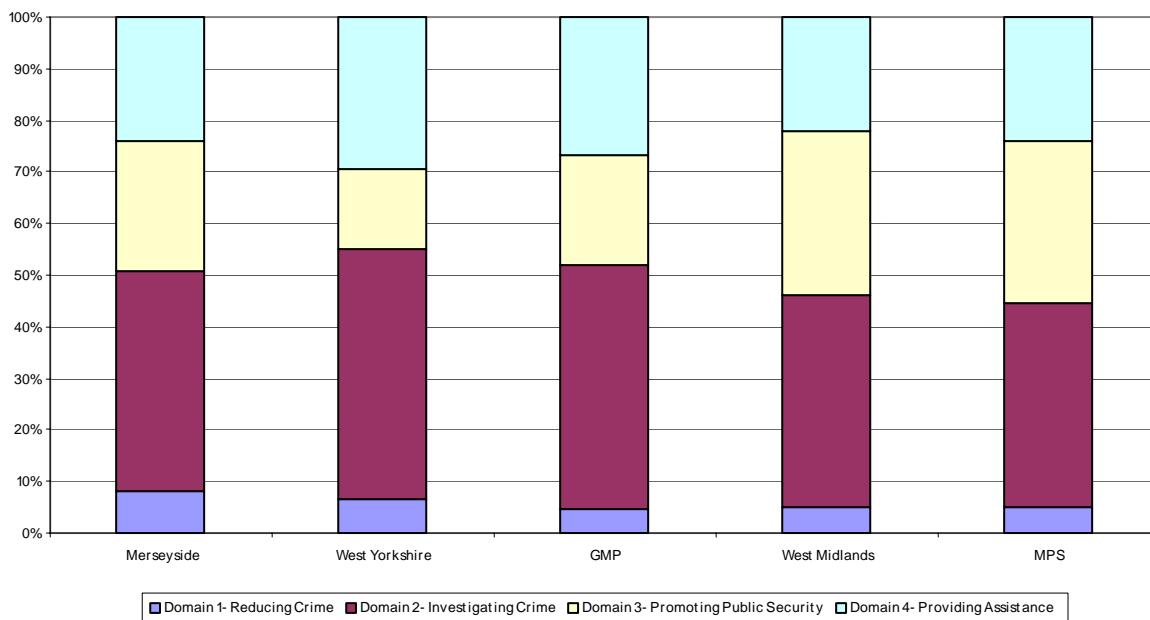
Metropolitan Police Service - Home Office ADR

Home Office Domains & Activity codes	CODE	2006/07		2005/06		Change in %
		Total Cost £'000	%	Total Cost £'000	%	
REDUCING CRIME						
Crime prevention activity	PP	37,127	1.2	31,983	1.0	0.21
Role Code - Intelligence research and analysis	RF	80,838	2.6	101,352	3.1	-0.53
Role Code - Crime partnerships	RC	27,419	0.9	22,406	0.7	0.19
Role Code - Police protection	RR	1,080	0.0	1,836	0.1	-0.02
Total Reducing Crime		146,465	4.7	157,577	5.1	-0.36
INVESTIGATING CRIME						
Violence against the person – S20 & more serious	CA	164,909	5.3	215,805	6.7	-1.36
Violence against the person – S47 & less serious	CB	47,916	1.5	50,212	1.6	-0.01
Sexual offences	CD	69,403	2.2	70,480	2.2	0.06
Burglary dwelling	CH	60,465	2.0	66,424	2.1	-0.11
Burglary - commercial & other	CI	30,434	1.0	34,634	1.1	-0.09
Robbery	CK	96,534	3.1	97,189	3.0	0.11
Theft of or from motor vehicle	CL	47,048	1.5	52,168	1.6	-0.10
Deception/fraud	CM	42,148	1.4	53,887	1.7	-0.31
Theft other	CN	74,173	2.4	82,610	2.6	-0.16
Drugs offences	CR	104,328	3.4	98,571	3.1	0.32
Criminal damage	CT	27,858	0.9	30,675	1.0	-0.05
Other crime	CX	205,194	6.6	224,881	7.0	-0.34
Court duties/escort	PD	13,349	0.4	15,891	0.5	-0.06
Deal with informants	PI	7,678	0.2	7,584	0.2	0.01
Prison interviews	PS	1,682	0.1	1,878	0.1	0.00
Monitoring cellblock PACE	SC	5,056	0.2	5,068	0.2	0.01
Relief custody duties	SD	16,233	0.5	18,100	0.6	-0.04
Role Code - Prisoner handling / custody	RH	91,424	3.0	60,751	1.9	1.07
ID parades	SL	1,239	0.0	10,804	0.3	-0.29
Role Code - Warrants	RW	7,712	0.2	6,202	0.2	0.06
Role Code - Criminal Justice	RP	34,564	1.1	66,272	2.1	-0.94
Total Investigating Crime		1,149,348	37.1	1,270,086	39.4	-2.23
PROMOTING PUBLIC SAFETY						
Traffic Other	ND	63,074	2.0	62,609	1.9	0.10
Visible Patrol	PA	382,927	12.4	413,043	12.8	-0.43
Special operations / events	PF	49,937	1.6	56,370	1.7	-0.13
Community Involvement	PJ	42,880	1.4	42,591	1.3	0.07
Role Code - National, international and capital city policing, including anti-terrorist activities and Special Branch	RA	575,666	18.6	538,241	16.7	1.92
Role Code - Non-crime partnerships	RD	5,781	0.2	5,404	0.2	0.02
Role Code - Licensing	RL	6,553	0.2	5,954	0.2	0.03
Total Promoting Public Safety		1,126,816	36.4	1,124,211	34.8	1.56

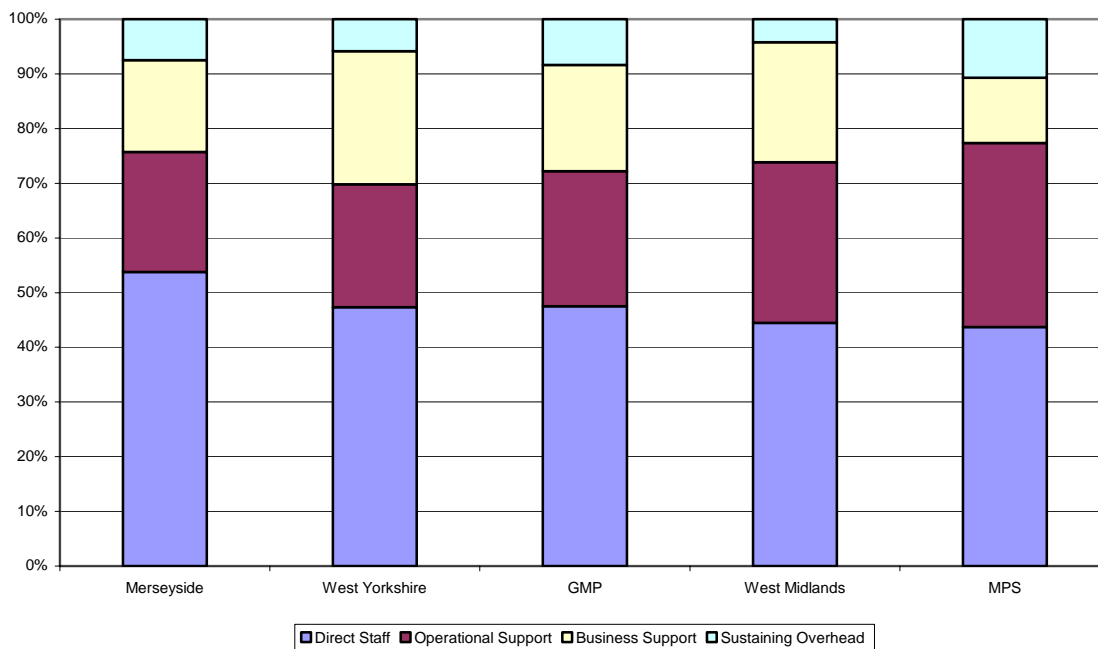
Home Office Domains & Activity codes		2006/07		2005/06		Change in %
		Total Cost	%	Total Cost	%	
PROVIDING ASSISTANCE	CODE	£'000		£'000		
RTA fatal/serious	NA	23,186	0.7	19,281	0.6	0.15
RTA minor injury / damage	NB	18,296	0.6	15,958	0.5	0.10
Public disorder	NF	106,457	3.4	113,786	3.5	-0.09
Domestic dispute	NG	40,775	1.3	43,843	1.4	-0.04
Complaint / nuisance	NH	12,255	0.4	11,258	0.3	0.05
Prostitution	NI	6,422	0.2	6,337	0.2	0.01
False alarms	NM	3,081	0.1	3,583	0.1	-0.01
Missing person	NN	22,256	0.7	28,370	0.9	-0.16
Sudden/suspicious death	NO	16,321	0.5	13,939	0.4	0.10
Other non crime	NX	92,719	3.0	91,065	2.8	0.17
Property enquiries	PN	29,657	1.0	26,724	0.8	0.13
Non incident enquiries	PO	57,713	1.9	59,817	1.9	0.01
Monitoring cellblock PACE	SC	2,138	0.1	2,503	0.1	-0.01
Relief custody duties	SD	6,930	0.2	9,212	0.3	-0.06
Role Code - Prisoner handling / custody	RH	38,562	1.2	30,038	0.9	0.31
Call handling / relief control room duties / enquiry desk	SF	981	0.0	886	0.0	0.00
Role Code - Call handling / enquiry office	RJ	164,954	5.3	155,066	4.8	0.52
Role Code - Criminal Justice	RP	14,894	0.5	32,767	1.0	-0.53
Role Code - Family liaison	RT	14,888	0.5	10,349	0.3	0.16
Total Providing Assistance		672,486	21.7	674,783	20.9	0.81
TOTAL		3,095,115	100.0	3,226,658	100.0	

Metropolitan Police Service – Comparison to Most Similar Forces

The following table shows the comparison between MSF ABC Data by PPAF domain.



The following table shows the comparison between MSF ABC Data by cost category.



Time Series Data From Annual Data Return

The following table shows the comparison between cost category 2006/07 and 2005/06 for the MPS:

Type of Cost	2006/07		2005/06	
	£'000s	%	£'000s	%
Direct Staff Costs BCU	958,295		987,982	
Direct Staff Costs Central	394,474		486,397	
Total Direct Staff	1,352,769	43.7	1,474,379	45.7
Operational Support BCU	538,046		581,292	
Operational Support Central	504,298		461,725	
Total Operational Support	1,042,344	33.7	1,043,017	32.3
Business Support BCU	98,326		118,638	
Business Support Central	55,915		61,866	
Business Support HQ	214,282		231,103	
Total Business Support	368,523	11.9	411,607	12.8
Sub-total (excluding Sustaining)	2,763,636		2,929,003	
Sustaining	331,479	10.7	297,655	9.2
Total	3,095,115	100.0	3,226,658	100.0