



## Monthly Performance Information – June 2006

This note has combined performance information, showing both ‘hard’ crime figures and information regarding the experiences and perceptions of Londonders and MPS customers, which will be made available to members as required.

**Prepared for the MPA Full Authority Meeting: April-June 2006 compared to April-June 2005**

					Sanction Detections	
	Apr-Jun 06	Apr-Jun 05	Difference	% Change	Apr-Jun 06	Apr-Jun 05
<b>Total Notifiable Offences</b>	238,381	255,575	-17,194	<b>-6.7%</b>	19.2%	16.6%
<b>BCS Comparator crime</b>	140,777	147,067	-6,290	<b>-4.3%</b>	12.7%	10.4%
<b>Residential Burglary</b>	14,253	14,666	-413	<b>-2.8%</b>	22.3%	19.5%
<b>Robbery</b>	11,753	11,066	+687	<b>+6.2%</b>	13.1%	12.5%
<b>Motor Vehicle Crime</b>	35,308	34,474	+834	<b>+2.4%</b>	6.3%	6.5%
<b>Gun Enabled Crime</b>	799	1,032	-233	<b>-22.6%</b>	15.0%	21.8%
<b>Trident Gun Crime</b>	52	74	-22	<b>-29.7%</b>	21.2%	14.9%
<b>Homicide</b>	42	37	+5	<b>+13.5%</b>	83.3%	102.7%
<b>Road Fatalities (05/06)</b>	223	206	+17	<b>+8.3%</b>	N/A	N/A
<b>Violent Crime</b>	63,460	66,317	-2,857	<b>-4.3%</b>	23.8%	21.1%
<i>Hate Crime:</i>						
<b>Domestic Violence</b>	15,137	15,528	-391	<b>-2.5%</b>	32.4%	23.9%
<b>Racist Crime</b>	2,778	2,946	-168	<b>-5.7%</b>	25.2%	19.2%
<b>Homophobic Crime</b>	312	352	-40	<b>-11.4%</b>	14.7%	16.8%

## Public Satisfaction Information

**Crime Victim Survey (new figures available in August covering April – June)**

Satisfaction with...	2005/6	2004/5	Percentage Point Change
...making contact	86%	82%	<b>+4</b>
...action taken	77%	64%	<b>+13</b>
...being kept informed	59%	48%	<b>+11</b>
...treatment by staff	92%	86%	<b>+ 6</b>
Overall service received	79%	68%	<b>+11</b>
Overall service received (victims of racist incidents)	73%	59%	<b>+14</b>
White victims overall	80%	70%	0
BME victims overall	73%	63%	(target is no gap)
Gap	7%	7%	

**British Crime Survey (new figures available in 3 Months)**

	Yr ending Dec 05	Yr ending Dec 04	Percentage Point Change*
Satisfaction with local policing	53%	52%	<b>+1</b>
Fear of crime (burglary)	18%	17%	<b>+1</b>
Fear of crime (car crime)	18%	19%	<b>- 1</b>
Fear of crime (violence)	26%	25%	<b>+1</b>
Perception (anti-social behaviour)	26%	27%	<b>- 1</b>
Perception (drugs)	31%	32%	<b>- 1</b>



\*Change highlighted in green is statistically significant

**Public Attitude Survey (new figures available in August)**

	2005/6	2004/5	Percentage Point Change
Confidence in policing (local)	58%	52%	+6
Confidence in policing (London)	64%	53%	+11
Satisfaction with policing (local)	63%	54%	+9
Importance of knowing a local police officer	88%	77%	+11
Feeling informed about local police activity	45%	35%	+10
Community relations between police and public very / fairly good	71%	63%	+8

**Anti Social Behaviour Survey**

This is a new survey and the first results will be available in August.

**Safer Neighbourhoods Survey**

Safer Neighbourhoods surveying takes place in the first quarter of the year, with this year's surveys currently underway. Results will be reported in the autumn.

**Other London surveys**

A GLA MORI poll conducted in the last week of April showed that 52% of Londoners have noticed more police in their local neighbourhood in the past year. Of those who had seen more police 72% said it helped make them feel safer.

**Summary**

**Headlines from crime statistics**

- Total notifiable offences are down 6.7%
- BCS comparator crime is down 4.3%
- Residential burglary is down 2.8%
- Robbery has increased by 6.2%
- Motor vehicle crime has increased by 2.4%
- Gun enabled crime has fallen by 22.6%
- Trident gun crime has decreased from 74 offences to 52 offences
- Homicides are up from 37 to 42
- Road fatalities are seventeen higher than last year at 223 (2005/06 vs. 2004/05)
- Violent Crime is down by 4.3%
- Domestic Violence has fallen by 2.5%
- Racist crime has fallen by 5.7%
- Homophobic crime is down by 40 offences, or 11.4%
- The TNO Sanction detection rate stands at 19.2%, the MPS has a 20% target.

**Headlines from surveys**

**Crime Victim Survey**

- Satisfaction has increased for all performance indicators for 2005/2006 when compared to 2004/2005.



- Overall satisfaction – has increased from 68% to 79%,
  - White victim respondents increased from 70% to 80% and
  - BME victim respondents increased from 63% to 73%.
  - Overall satisfaction is driven mainly by police actions and police follow-up, with police actions being the main driver.

### **British Crime Survey**

The most recent BCS data (year to December 2005) shows the MPS at 53% satisfaction with local policing.

The BCS provides information on public perceptions of anti-social behaviour where the MPS has improved from 27% (2004/05) to 26% of people who think ASB is a problem.

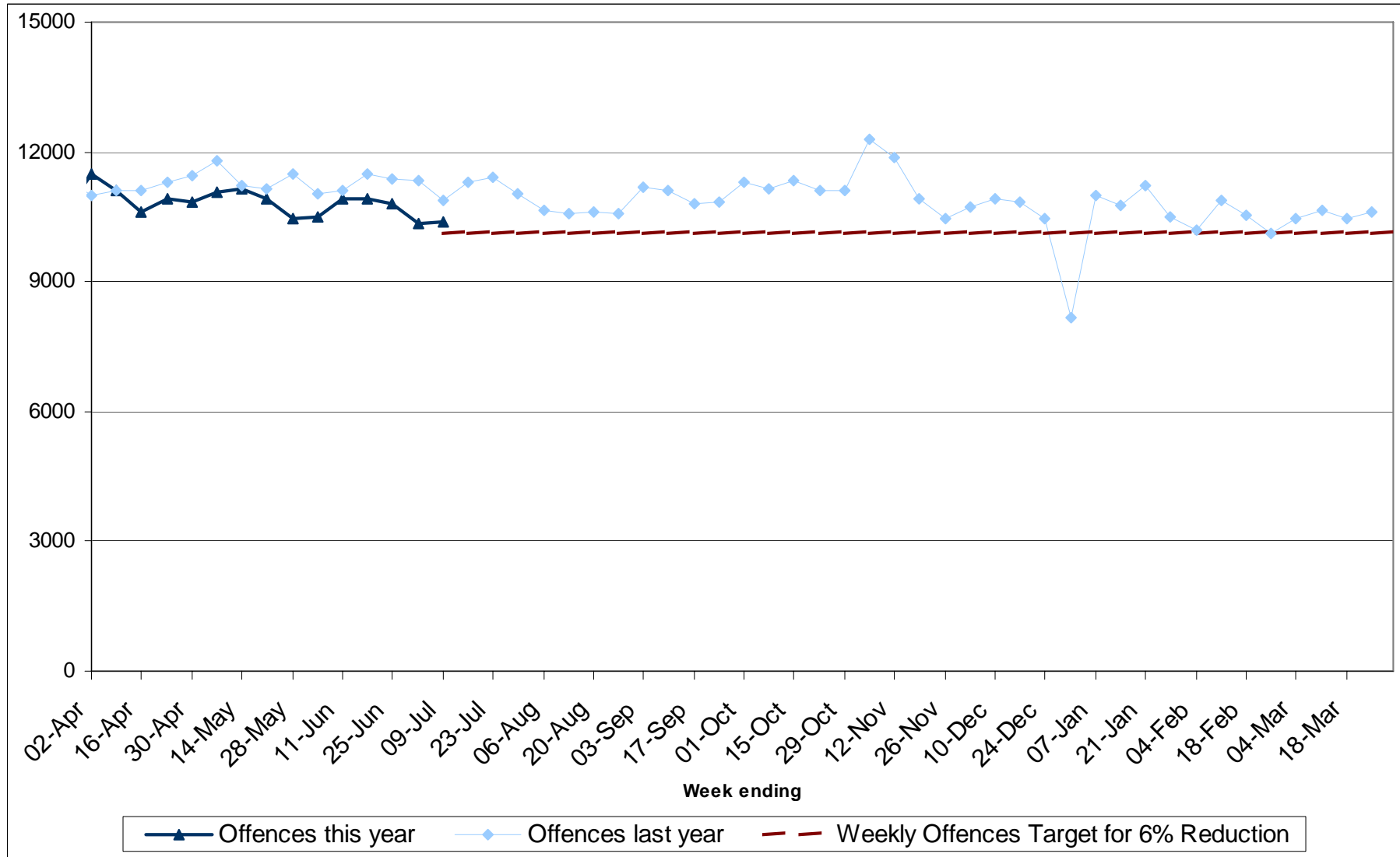
### **Public Attitude Survey**

The key findings for 2005/06 compared with 2004/05 show that:

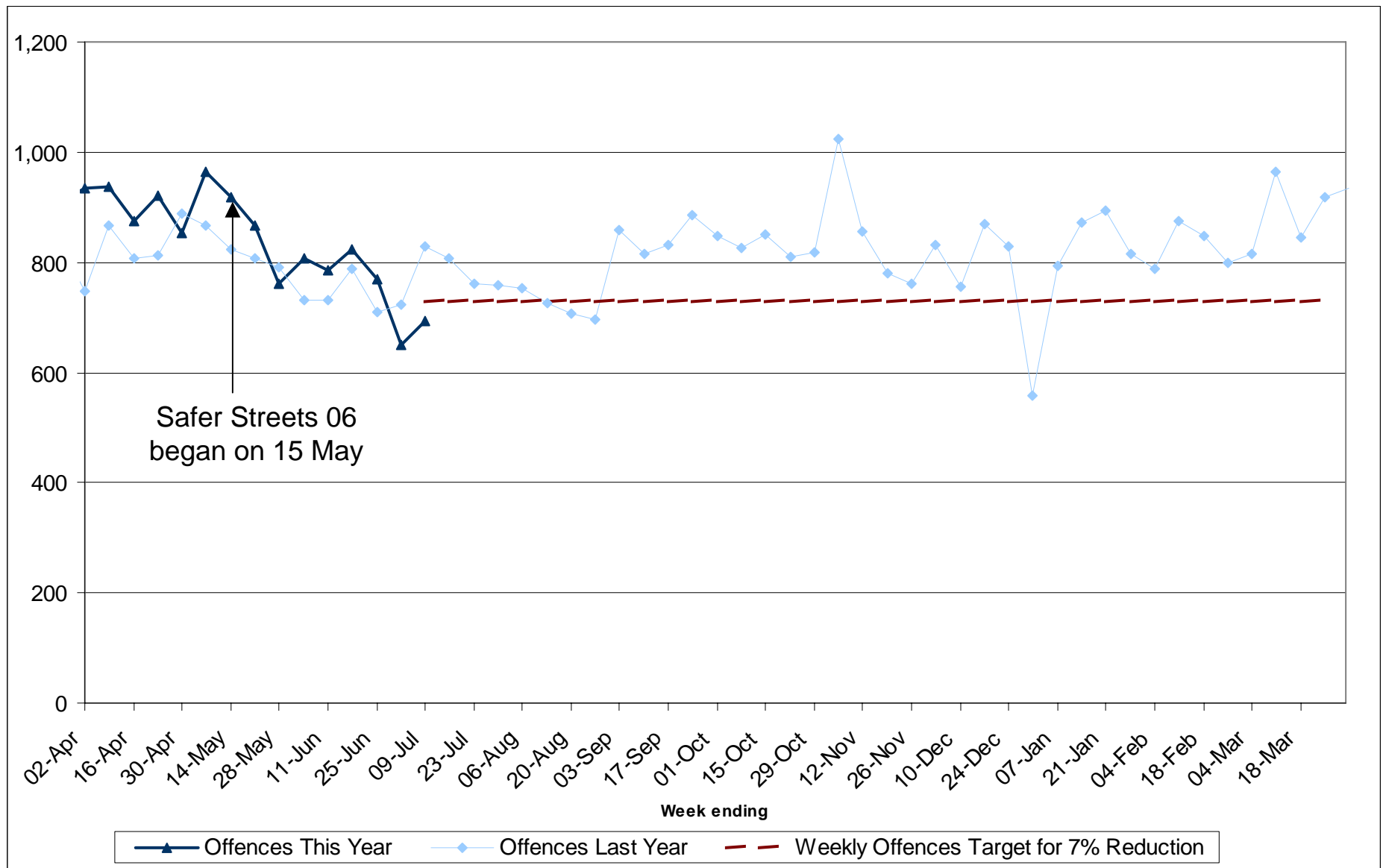
- Confidence in policing locally has increased from 52% to 58%
- Confidence in London policing has increased from 53% to 64%
- Satisfaction with neighbourhood policing has increased from 54% to 63%

Please note: A 'surveys explained' document has been produced to compliment this information.

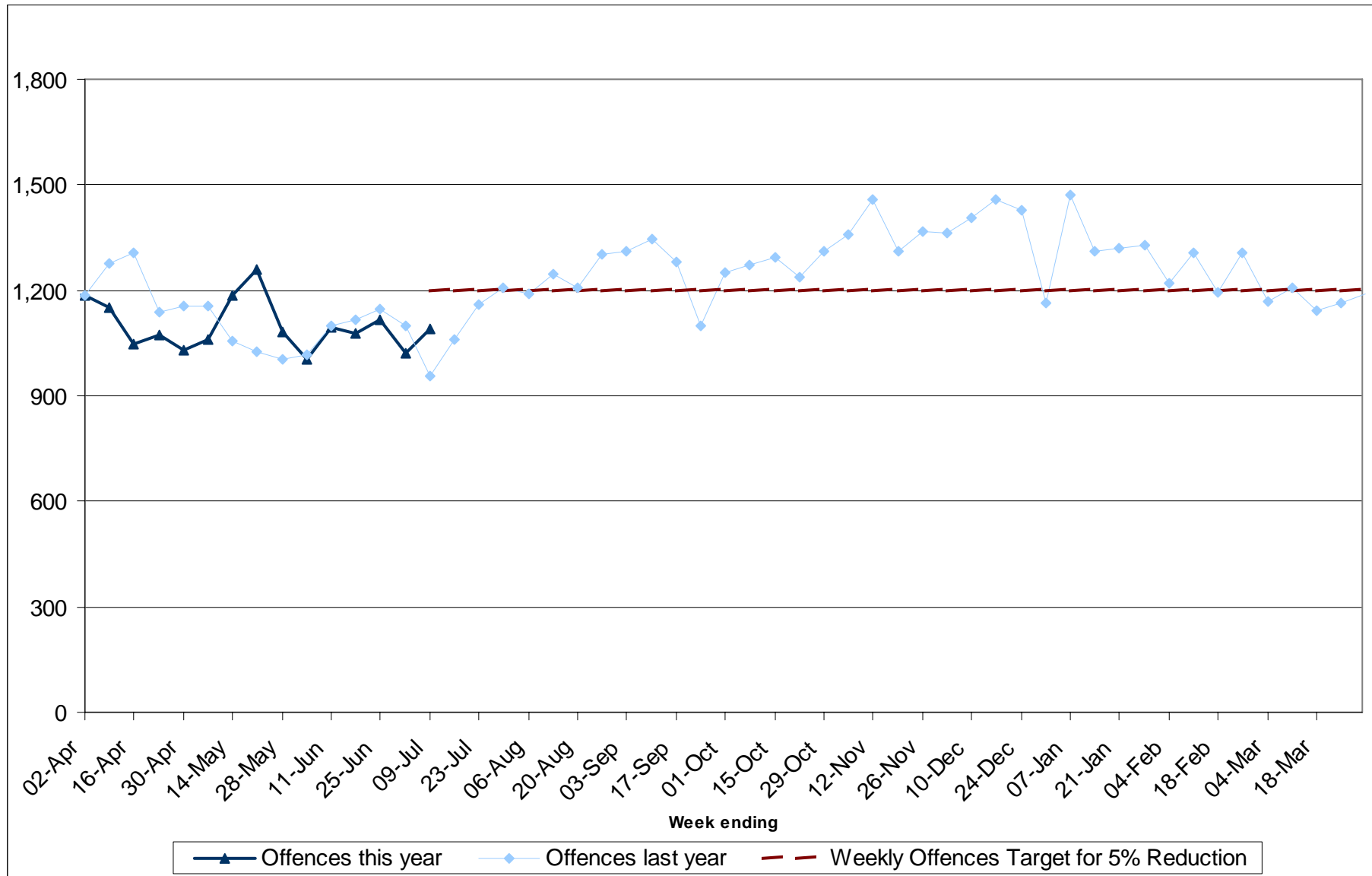
# Weekly BCS Comparator Crime – MPS



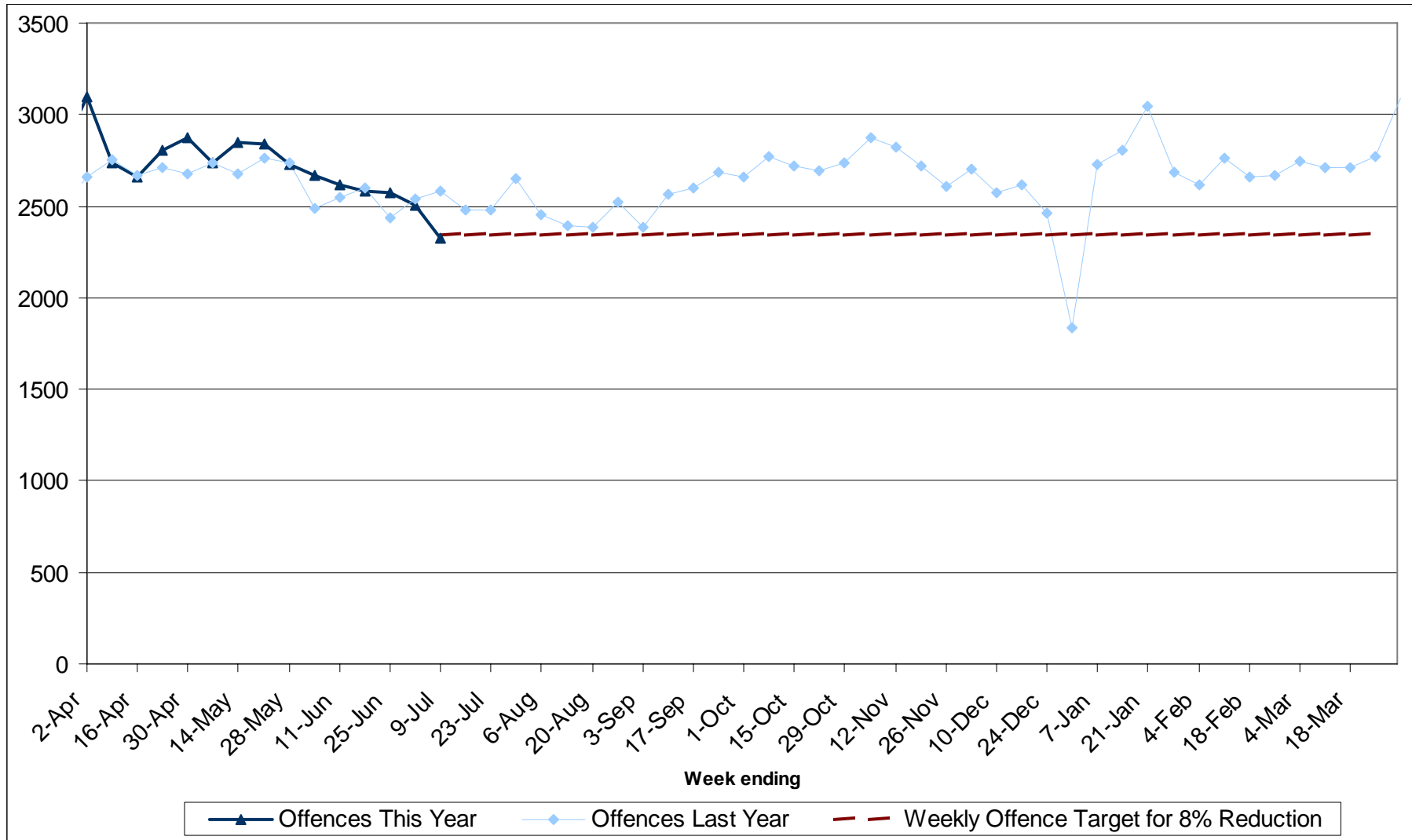
# Weekly Robbery of Personal Property offences - MPS (1)



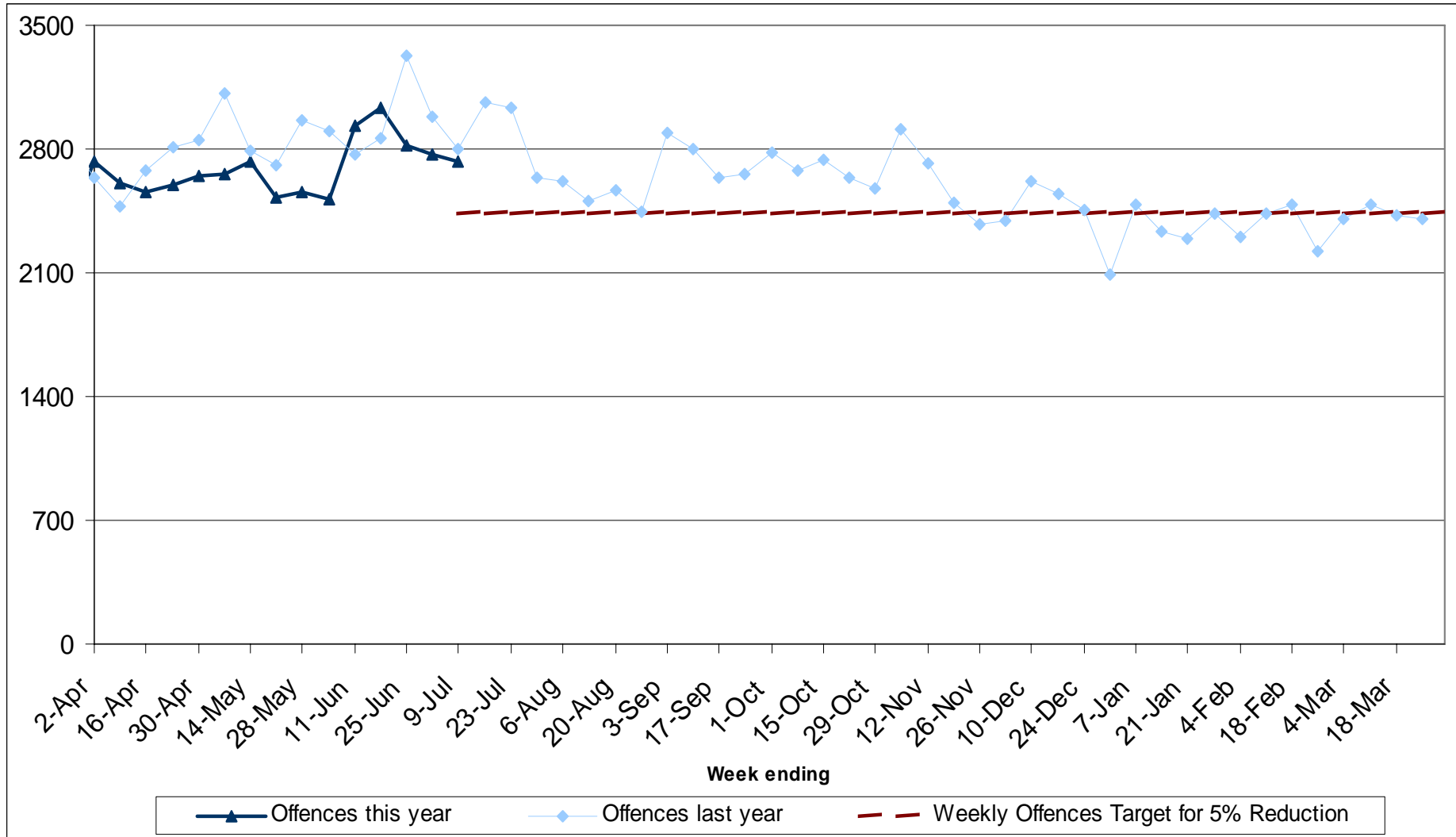
# Weekly Residential Burglary offences - MPS



# Weekly M/V Crime – MPS



# BCS Wounding and Common Assault offences – MPS





# Offences Brought to Justice and TNO Sanctioned Detection Rate

## Offences Brought to Justice in London

