

Performance Information – For MPA Full Authority on 24 July 2008: 12 month rolling performance

Prepared for the Metropolitan Police Authority Full Authority Meeting
July 2007 – June 2008 compared to July 2006 – June 2007:

	July 2007 – June 2008	July 2006 – June 2007	Difference	% Change	Sanction Detections (Homicide = all detections)	
					July 2007 – June 2008	July 2006 – June 2007
Total Notifiable Offences	854,559	905,703	-51,144	-5.6%	25.7%	22.2%
Most serious violence & assault with less serious injury	73,279	77,279	-4,000	-5.2%	30.5%	26.5%
Youth Violence¹	20,601	22,329	-1,728	-7.7%	N/A	N/A
Serious acquisitive crime²	211,728	228,938	-17,210	-7.5%	10.8%	10.7%
Residential Burglary	59,443	59,441	2	+0.0%	14.5%	16.1%
Robbery	34,829	44,335	-9,506	-21.4%	16.1%	15.2%
Business Crime³	108,388	118,326	-9,938	-8.4%	29.8%	28.3%
Motor Vehicle Crime	117,456	125,162	-7,706	-6.2%	7.4%	6.5%
Gun Crime	2,670	3,109	-439	-14.1%	21.6%	22.0%
Knife Crime	9,997	11,642	1,645	-14.1%	25.3%	23.1%
Trident Gun Crime	305	302	3	+1.0%	20.7%	17.9%
Homicide	154	175	-21	-12.0%	97.4%	78.9%
Rape	2,114	2,110	4	+0.2%	31.5%	36.5%
Road Fatalities	213	226	-13	-5.8%	N/A	N/A
<i>Hate Crime:</i>						
Domestic Violence	51,896	52,984	-1,088	-2.1%	45.1%	41.1%
Racist Crime	8,725	9,609	-884	-9.2%	39.6%	38.3%
Homophobic Crime	1,008	1,156	-148	-12.8%	40.7%	39.9%

Key Messages

- TNOs have declined for the 7th successive rolling 12 months and are at their lowest level in 10 years.
- There are just over 1,700 fewer victims of youth violence in this period.
- Most serious violence and assault with less serious injury has fallen by 4,000 offences compared to last year.
- Robberies are down by over 9,506 [21.4%]
- Motor vehicle crime is down by 7,706 [6.2%]
- Gun crime is down by 439 offences [14.1%] (intimated firearm offences not included)
- Knife crime recorded a reduction of 1,645 offences [14.1%] compared to previous 12 month period, (“intimated” are not included).
- All three types of reported hate crime have fallen, with improved sanction detection rates compared with the previous 12 months.

¹ This is the number of victims for offences of most serious violence, assault with less serious injury and gun crime & knife crime where the victim is under 20

² Residential burglary, robbery and MV crime

³ Robbery of business property, theft employee, theft from shops, burglary non-dwelling & fraud & forgery

General – APACS

In March 2008 the Home Office brought out APACS (Assessments of Policing and Community Safety) as its new framework for assessing the performance of the police and their work with partners. APACS changed the definitions of a number of indicators (e.g. gun crime) and introduced new ones (knife crime) from 2008/09 onwards. Those changes affected the definitions of the MPA's top priorities for 2008/09 - the Critical Performance Areas such as youth violence, serious acquisitive crime and gun crime.

In the above table, gun crime and knife crime are calculated using the new APACS definition as far as possible for both years.

Because the APACS definitions were only announced in the middle of March 2008, there were some unexpected changes that are still being worked through around 'intimated crimes' where the victim is threatened with a weapon but does not see it. It is likely that gun and knife crime figures will be revised in the coming months.

Trident

Trident gun crime covers the discharge of lethal barrelled weapons. Until recently, only those offences that had both a victim and a suspect from black communities were included in this total. Others were recorded as 'Trafalgar gun crime'. However, about half of all 'Trafalgar' offences have either a black victim or a black suspect, and it was decided to combine the two sets of figures in this overview of performance. More detailed data remains available separately.

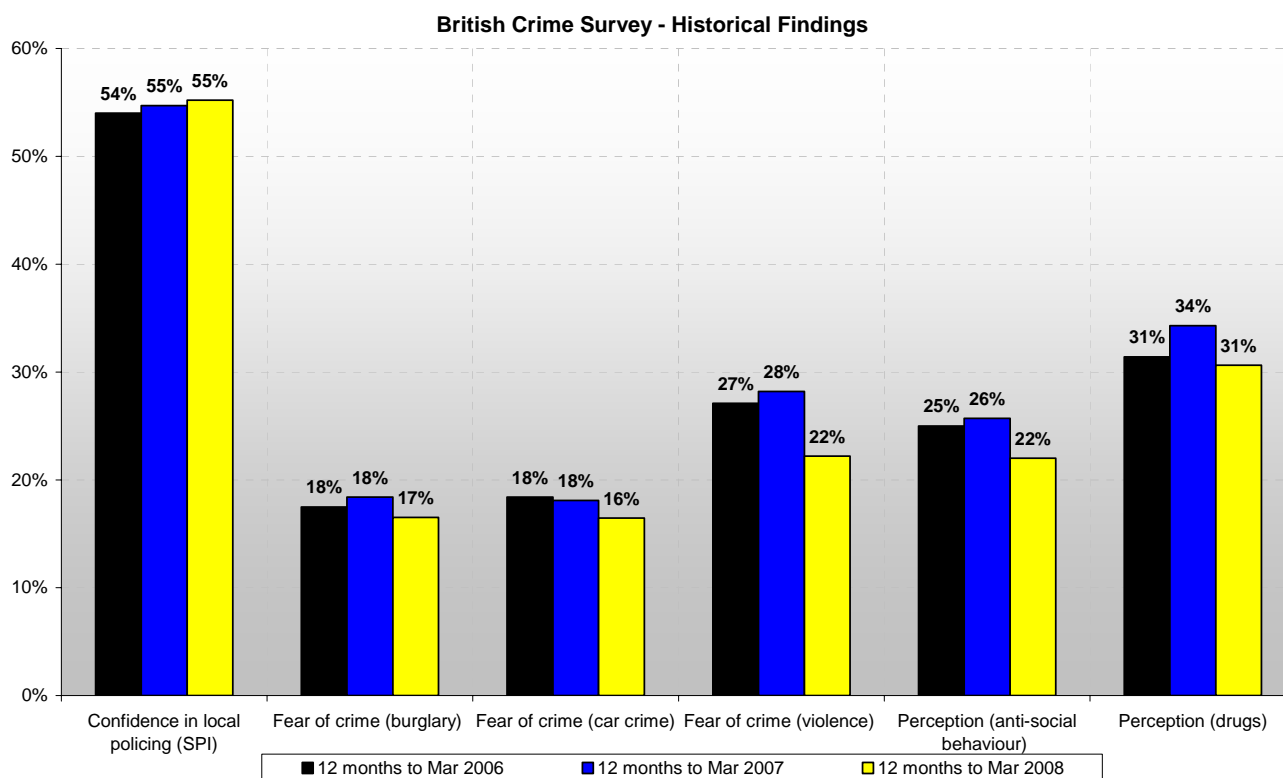
Public Satisfaction Information

A significant change is highlighted in **green** (improvement) or **red** (deterioration)

British Crime Survey (BCS): Newly reported

All numbers have been rounded up and hence may not appear to add up exactly.

(All SPIs)	12 months to Mar 2008	12 months to Mar 2007	12 months to Mar 2006	%pt Change 07/08 vs. 06/07	%pt Change 07/08 vs. 05/06
Confidence in local policing	55%	55%	54%	+1%	+1%
Fear of crime (burglary)	17%	18%	18%	-2%	-1%
Fear of crime (car crime)	16%	18%	18%	-2%	-2%
Fear of crime (violence)	22%	28%	27%	-6%	-4%
Perception (anti-social behaviour)	22%	26%	25%	-4%	-3%
Perception (drugs)	31%	34%	31%	-4%	-1%

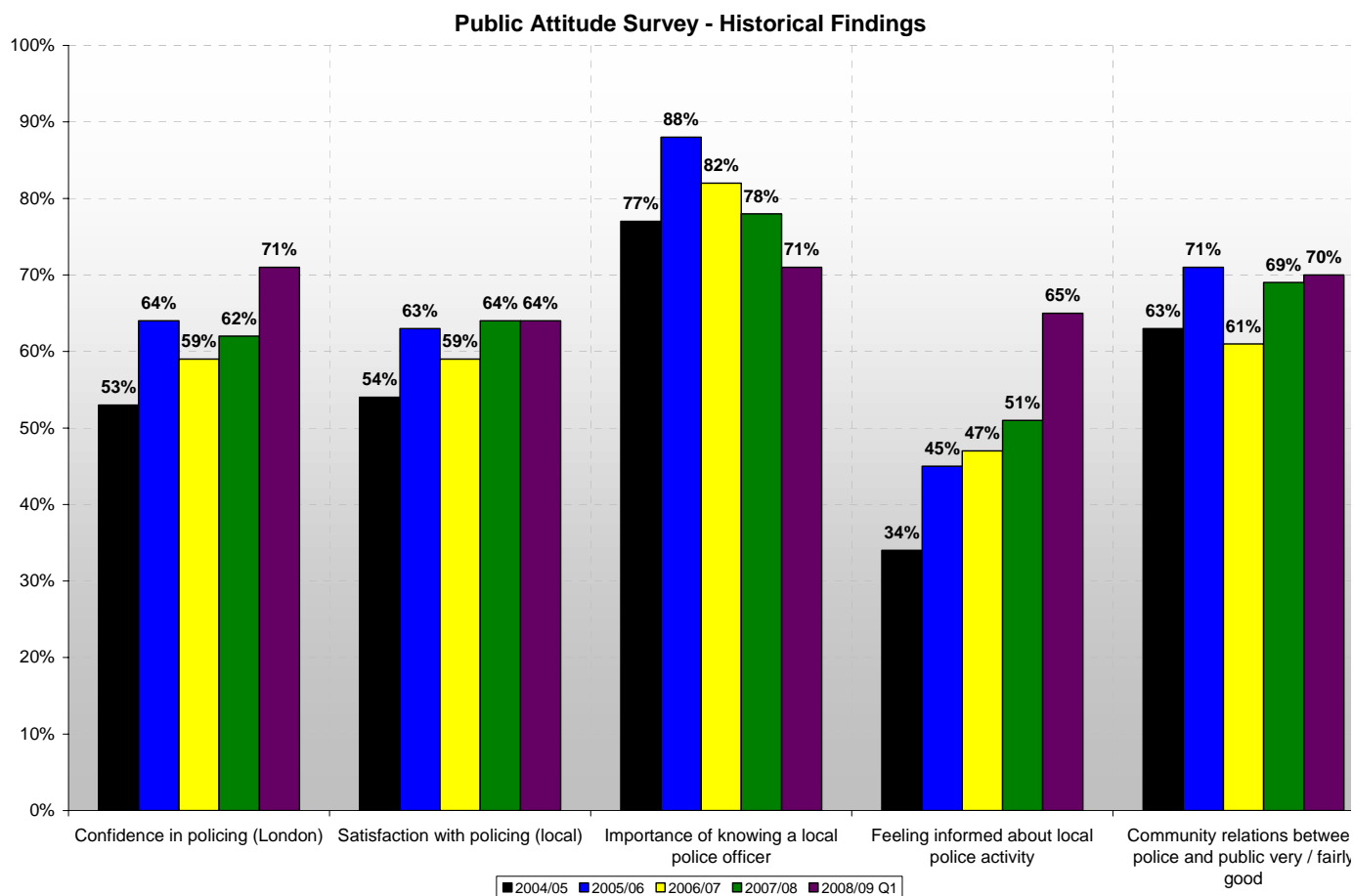


- Confidence in local policing stands at 55.2%, an improvement of half a percentage point on last year, and means the MPS remains the best performing force in its Home Office group (MSF) for this indicator. The 2007/08 target of 55.2% has been met.
- Fear of crime has dropped in all the categories listed above with the *fear of violence as a problem locally* declining by 6% points.

Public Attitude Survey (PAS): Newly reported

	2008/09 Q1	2007/08	2006/07	2005/06	2004/05	%pt Change: 08/09 vs.			
						07/08	06/07	05/06	04/05*
Confidence in policing (London)	71%	62%	59%	64%	53%	+9%	+12%	+7%	+18%
Satisfaction with policing (local)	64%	64%	59%	63%	54%	0%	+5%	+1%	+10%
Importance of knowing a local police officer	71%	78%	82%	88%	77%	-7%	-11%	-17%	-6%
Feeling informed about local police activity	65%	51%	47%	45%	34%	+14%	+18%	+20%	+31%
Community relations between police and public very / fairly good	70%	69%	61%	71%	63%	+1%	+9%	-1%	+7%

*Some aspects of methodology changed for this survey in 2005/06 and this may be the reason for at least some of the improvement



- The newly released Public Attitude Survey data show that both confidence in London policing and the proportion of people feeling informed about local police activity has improved significantly since 2004/05.
- The proportion of people who thinks knowing a local officer is important has dropped for the fourth consecutive year.

Safer Neighbourhoods Performance Framework (Public Attitude Survey): Newly reported

	2008/09 Q1	2007/08	2006/07	2005/06	2004/05	Change 08/09 vs.			
						07/08	06/07	05/06	04/05*
Confidence in policing (local)	62%	56%	56%	58%	52%	+6%	+6%	+4%	+10%
Feeling safe walking alone during the day	96%	97%	96%	96%	97%	-1%	0%	0%	-1%
Feeling safe walking alone after dark	72%	72%	74%	71%	75%	0%	-2%	+1%	-3%
Agree the police understand the local issues affecting this community	66%	64%	61%	64%	N/A	+2%	+5%	+2%	N/A
Agree the police deal with issues that affect their community	63%	62%	60%	60%	N/A	+1%	+3%	+3%	N/A
Percentage of people worried about anti-social behaviour	38%	40%	36%	35%	44%	-2%	+2%	+3%	-6%

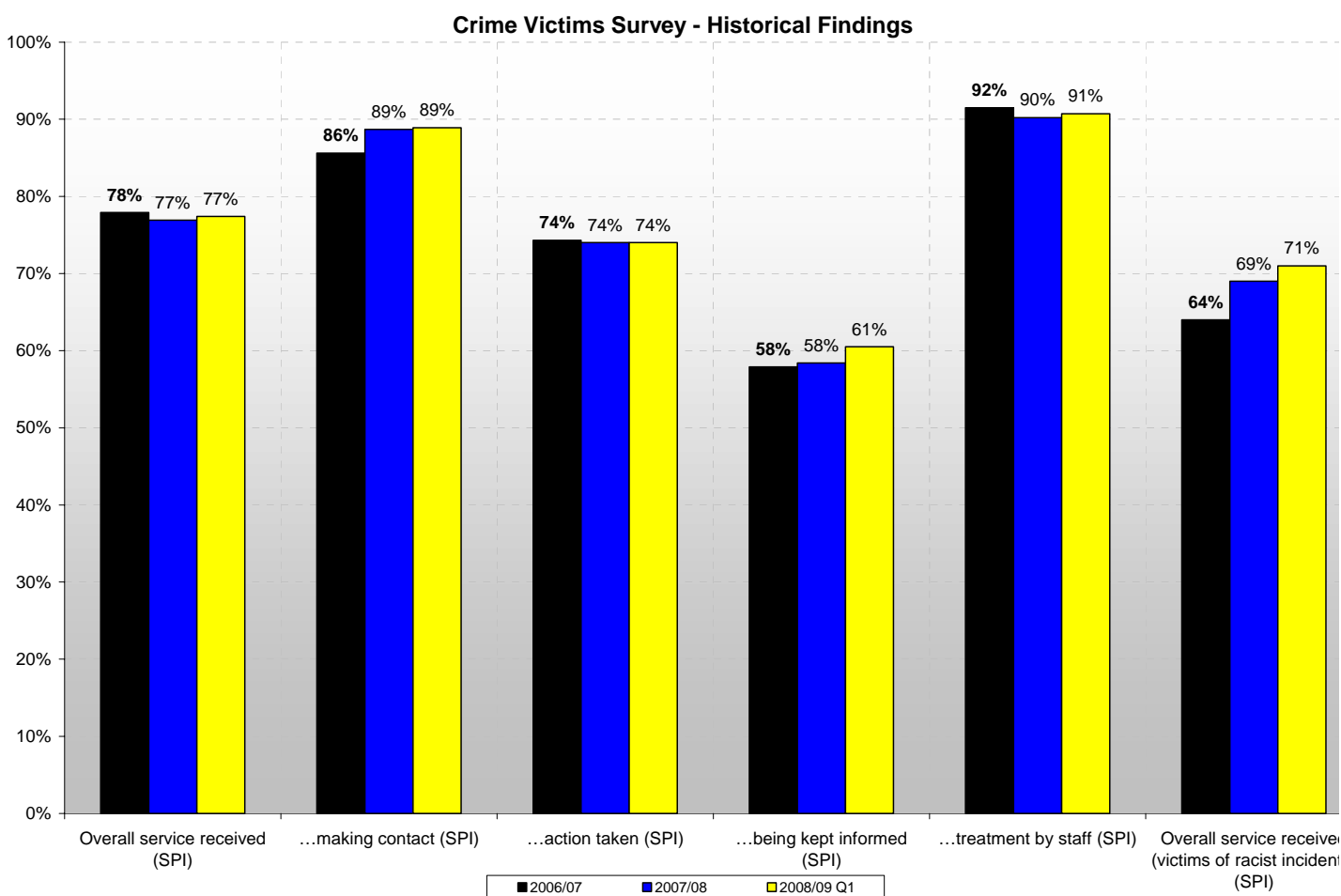
*Some aspects of methodology changed for this survey in 2005/06 and this may be the reason for at least some of the improvement

- Newly released data shows that in the first quarter of 2008/09, confidence in local policing has increased by 6% points compared to last year and is currently the highest since 2004/05.
- The proportion of people feeling safe walking alone during the day fell by 1% point but all other indicators listed above either improved slightly or remained steady compared to last year.

Crime Victim Satisfaction Survey: Newly reported

Results reflect new weighted data and therefore may differ from that previously published

Satisfaction with...	2008/09 Q1	2007/08	2006/07	Change 08/09 vs.	
				07/08	06/07
Overall service received (SPI)	77%	77%	78%	+1%	-1%
...making contact (SPI)	89%	89%	86%	+0%	+3%
...action taken (SPI)	74%	74%	74%	0%	0%
...being kept informed (SPI)	61%	58%	58%	+2%	+3%
...treatment by staff (SPI)	91%	90%	92%	+1%	-1%
Overall service received (victims of racist incidents) (SPI)	71%	69%	64%	+2%	+7%
White victims overall	77%	77%	75%	0%	+1%
BME victims overall	73%	72%	72%	+2%	+2%
Gap (SPI)	3%	5%	4%	-2%	-1%



- The latest data shows overall satisfaction for 2008/09 Q1 remains on a par with 2007/08 but has slightly deteriorated compared with 2006/07.
- The satisfaction of victims of racist incidents improved by 7% points over 2006/07 with the gap between white and BME victims at its narrowest in the last 2 years.