

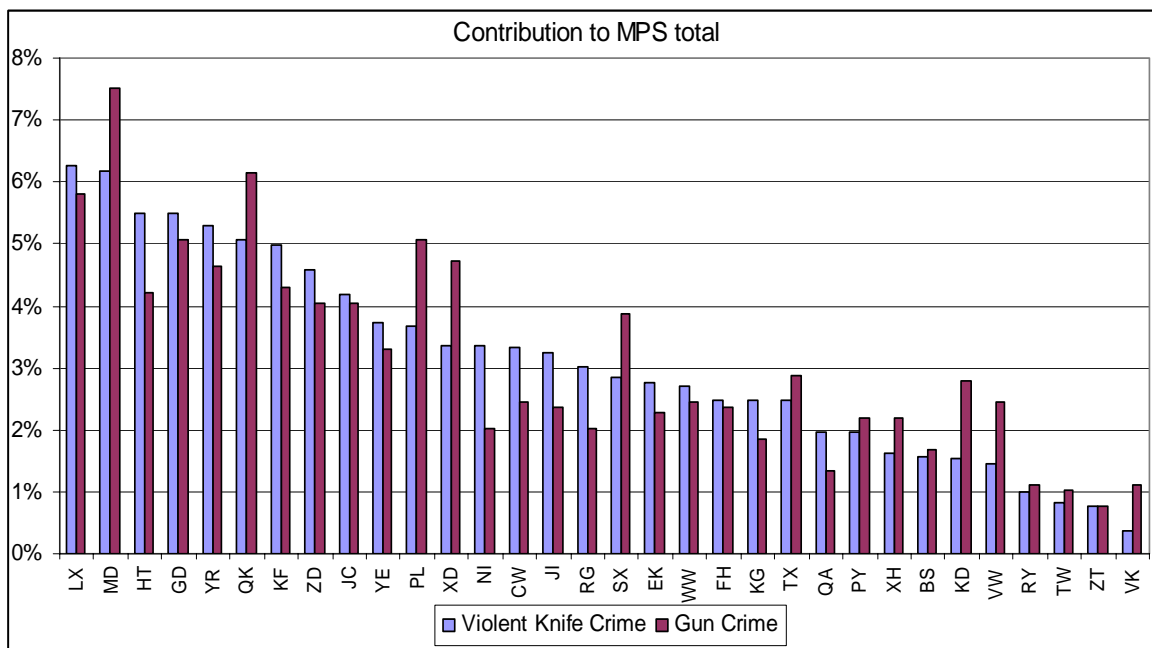
Knife crime and Gun Crime by borough

All data in this report is based on April – July 04, and includes offences investigated by TP and SCD.

Gun Crime has a set definition, VAP (excluding possession of offensive weapon), Sexual Offences, Robbery and Burglary where a gun was used or carried. Knife crime generally uses the definition of all TNO except possession of offensive weapon. To compare gun crime and knife crime on boroughs I have used the gun crime definition for knife crime, to avoid confusion I'll refer to this as violent knife crime. The table at the end of this report shows us the break down of knife crime by crime type and shows that over 80% of knife crime is captured in the gun crime definition.

Contribution to MPS total Knife and Gun crime

All boroughs that contribute over 4% of MPS violent knife crime also contribute over 4% of gun crime, Lewisham and Ealing also contribute over 4% of MPS gun crime but not 4% of violent knife crime. The chart below shows MPS contribution of violent knife crime and gun crime by borough.



Changes in offences

Nine boroughs have an increase in violent knife crime of over 10%, April – July 04 against April – July 03. Six of these show an increase in gun crime, all boroughs showing over a 20% increase in violent knife crime are also showing an increase in gun crime. 14 boroughs show an increase of over 10% for gun crime seven of these show an increase in knife crime. The top four boroughs showing an increase in gun crime, all of over 90%, have a decreases in violent knife crime. Brent is the only high volume borough that is showing an increase in both gun and violent knife Crime.

This table shows each boroughs contribution to violent knife crime and gun crime April – July 04, and the change in offences for April – July 2004 against April - July 2003.

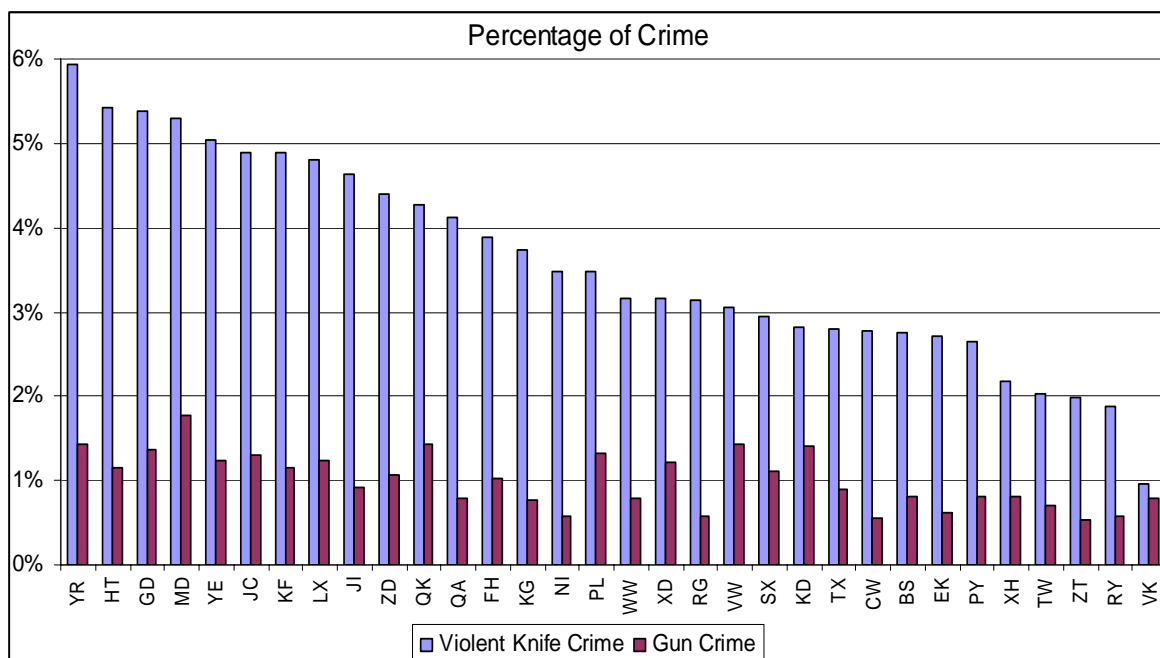
Division	Violent knife crime		Gun crime	
	Change	Contribution	Change	Contribution
LX	-15%	6.3%	-33%	5.8%
MD	-1%	6.2%	3%	7.5%
HT	3%	5.5%	-4%	4.2%
GD	-17%	5.5%	-21%	5.1%
YR	2%	5.3%	-27%	4.6%
QK	22%	5.1%	24%	6.2%
KF	-17%	5.0%	4%	4.3%
ZD	19%	4.6%	-25%	4.0%
JC	11%	4.2%	-14%	4.0%
YE	-2%	3.7%	-7%	3.3%
PL	-12%	3.7%	40%	5.1%
XD	-12%	3.4%	-15%	4.7%
NI	-2%	3.3%	-38%	2.0%
CW	-6%	3.3%	-26%	2.4%
JI	49%	3.3%	17%	2.4%
RG	-2%	3.0%	-4%	2.0%
SX	17%	2.9%	24%	3.9%
EK	-20%	2.8%	4%	2.3%
WW	4%	2.7%	-29%	2.4%
FH	6%	2.5%	27%	2.4%
KG	-9%	2.5%	10%	1.9%
TX	-11%	2.5%	21%	2.9%
QA	40%	2.0%	33%	1.3%
PY	14%	2.0%	-33%	2.2%
XH	46%	1.6%	63%	2.2%
BS	33%	1.6%	43%	1.7%
KD	-31%	1.5%	94%	2.8%
VW	-14%	1.4%	142%	2.4%
RY	-33%	1.0%	-35%	1.1%
TW	-3%	0.8%	100%	1.0%
ZT	-23%	0.8%	0%	0.8%
VK	-54%	0.4%	225%	1.1%
MPS Total	-2%	-	-3%	-

Percentage of crime involving a knife or gun

In order to identify boroughs with a particular violent knife / gun crime problem I have looked at gun crime and violent knife crime as a proportion of VAP (excluding possession of offensive weapon), Sexual Offences, Robbery and Burglary.

Knives are involved in 3.8% of VAP (excluding possession of offensive weapon), Sexual Offences, Robbery and Burglary with boroughs ranging from 1.0% to 5.9%, five boroughs have over 5.0% of their offences involving a knife Haringey, Hackney, Tower Hamlets, Southwark and Enfield. Guns are involved in 1.0% with boroughs ranging from 0.5% to 1.8% six boroughs have 1.4% or more. Harrow and Redbridge have above the MPS level violent knife crime and below MPS level gun crime. Lewisham, Ealing, Merton, Barnet and Havering have above the MPS level of gun crime and below the MPS level of knife crime.

The chart below show the proportion of VAP, excluding possession of offensive weapon, Sexual Offences, Robbery and Burglary involving a knife or a gun.



All knife crime by type

This table shows the breakdown of all knife crime for the April – July 03 and April – July 04. The total for violent knife crime has been included to show the figures that have been used in this report.

Major	Minor	Apr - Jul 03	Apr - Jul 04	Change
Violence Against the Person	Murder	15	24	60.0%
	GBH	505	509	0.8%
	ABH	518	615	18.7%
	Common Assault	383	420	9.7%
	Harassment	283	286	1.1%
	Other violence	240	281	17.1%
Violence Against the Person Total		1944	2135	9.8%
Sexual Offences	Rape	24	27	12.5%
	Other Sexual	27	28	3.7%
Sexual Offences Total		51	55	7.8%
Robbery	Personal Property	1953	1742	-10.8%
	Business Property	235	153	-34.9%
Robbery Total		2188	1895	-13.4%
Burglary	Burglary in a Dwelling	164	169	3.0%
	Burglary in Other Buildings	53	50	-5.7%
Burglary Total		217	219	0.9%
Violent Knife Crime		4400	4304	-2.2%
Theft and Handling	Theft/Taking of M/V	9	18	100.0%
	Theft From M/V	28	40	42.9%
	M/V Interference & Tampering	2	3	50.0%
	Theft From Shops	83	63	-24.1%
	Snatches	18	33	83.3%
	Picking Pockets, etc	21	32	52.4%
	Theft/Taking of Pedal Cycles	4	6	50.0%
	Handling Stolen Goods	4	3	-25.0%
	Other Theft	55	68	23.6%
Theft and Handling Total		224	266	18.8%
Fraud or Forgery	Counted per Victim	8	4	-50.0%
	Other Fraud & Forgery	1	1	0.0%
Fraud or Forgery Total		9	5	-44.4%
Criminal Damage	Criminal Damage To a Dwelling	59	83	40.7%
	Criminal Damage To Other Bldg	6	22	266.7%
	Criminal Damage To M/V	121	206	70.2%
	Other Criminal Damage	44	55	25.0%
Criminal Damage Total		230	366	59.1%
Drugs	Possession Of Drugs	47	43	-8.5%
	Drug Trafficking	11	8	-27.3%
Drugs Total		58	51	-12.1%
Other Notifiable Offences	Going Equipped	8	11	37.5%
	Other Notifiable	283	256	-9.5%
Other Notifiable Offences Total		291	267	-8.2%
Grand Total		5212	5259	0.9%