



PERFORMANCE REVIEW COMMITTEE - SUMMARY SHEET

Paper title: March Performance Report

Ref. No. PRC(01)37

Date of meeting: 23 April 2001

Date paper received by CDG: 19 April 2001

Date circulated: 19 April 2001

Member: Deputy Commissioner

Prepared by: Cath Kitching

Submitted for: ~~Decision~~ / Information / ~~For Note~~

Decisions:–

Decisions to be actioned by:

Previously considered by:

Date:

MPS Performance Report – March 2001

Contents:

Page 1 March scorecard

Page 2 Performance headlines

Page 7 Metstats charts

Page 14 Borough profile - (not attached)

Page 16 Best value and Policing Plan Indicator listings

BALANCED SCORECARD, MARCH 2001

	Standard or Target for 2000/2001	Actual Performance
Vision: Is London safe?		
1	Total Crime per 1000 population	136 crimes per 1000 population
2	Violent crime	136.6 crimes per 1000 pop
3	Level of Disorder	28.2 offences per 1000 pop
4	Fear of crime & feelings of public safety	58.9 incidents per 1000 pop
	% which feel threatened has increased from PAS 1999	44% feel threatened (PAS 2000)

Performance Results		
1	Homicide	89% clear-up rate
		89.9% (187% in March)
2	Burglary	2% reduction, 10% judicial disposals
		9.5% decrease, 9.8% JDs
3	Street Crime	Zero growth, 9% judicial disposals
		18.0% increase, 8.2% JDs
4	Autocrime	8% reduction, 8% judicial disposals
		0.2% decrease, 4.4% JDs
5	Young Offenders	PYO arrest to charge 2 days, to court listing 7 days (70%), and youth case disposal 28 days(80%)
		54.9% in 2 days, 65.5% in 7 days and 81.3% in 28 days (provisional data)
6	Race/Hate Crime	15% judicial disposal rate
		17.1% JDs
7	Stop & Search	Multiple indicator, no standard set
		16.1(white) 47.2(non-white)per 1000 pop (year to January)
8	CRR Training	Provide training for 40% of identified staff by 31 March 2001
		30.3% of identified staff
9	Emergency Calls	Answer 999 calls within 15 secs & Arrive within 12 mins 80% of the time
		999 calls 83.6% & 1 Calls 76.4%
10	Road Casualties	4% reduction against a baseline of 0.8 KSI collisions per 1000 pop
		0.77 per 1000 pop (year to January)
11	Drug-related Crime	10% increase for supply & pwi of class A, refer 2,000 offenders into treatment
		26.9% JD increase (Apr to Mar), 1247 offenders referred (Apr to Nov)

Resources		
1	Current Expenditure: Outturn -v- Budget	0.3% above budget (year end forecast based upon April to February)
2	Capital Expenditure: Outturn -v- Budget	April to February 69.5% spent (year end forecast 0.8% below budget)
3	Efficiency Targets on course	HMIC approved efficiency plan for 99/00
		3rd Quarter financial target achieved
5	Expenditure per head of population	Published annually - no target set
		£219 per head (98/99)

Corporate Health: Values		
2	Recruitment & Retention	5% turnover (Police), 15% (Civil)
		5.8% turnover (Police), 15.7% (Civil)
3	Representative Police Service	5% Ethnic Minority Officers
		4.15% (as of March)
4	Sickness	9 days p.a. (Police), 10 days (Civil Staff)
		10.9 days (Police), 11.9 days (Civil)(Year to Feb - provisional data only)
6	Accessibility	68% of MPS buildings accessible to disabled people
		45% accessible (Full survey due to be completed at year end)

Corporate Health: Customer Focus		
1	Customer Satisfaction	Multiple measures
		standard achieved in 1 out of 5 categories (April to December data)
2	High quality professional service	
		223.5 complaints per 1000 officers

Current information, based on a 12 month total for the period ending Mar 2001

Information from previous period, based on a 12 month total for the period ending Feb 2001

Key	
Green	Performing above upper control limit
Yellow	Performing above standard/target and below upper control limit
Red	Performing below standard/target but above lower control limit
Purple	Performing below lower control limit
Grey	Data available but target/standard not set
Red asterisk	Indicator based on partial information

Performance Headlines – March 2001

The Performance Report for March includes an MPS scorecard, a borough profile, and a full listing of Best Value and Policing Plan PIs as requested by the MPA.

Wherever possible, this report includes year-end figures. In some instances, these data are not yet available. This has been noted in the report. A full year-end report will be compiled when all the information is ready.

The performance highlights are described below.

Key Crime Targets	Achievement		Target met?	Better or worse than last month?
	Planning year to date Apr 2000-Mar 2001 (compared with Apr 00 – Mar 01 where applicable)	Performance last year April 1999 – Mar 2000 (compared with April 98 – Mar 99 where applicable)		
To achieve a homicide clear up rate of 89%	89.9%	76.5%	✓	☺
To achieve zero growth in street crime	+18.0%	+36.2%	✗	☺
To achieve a street crime JD rate of 9%	8.2%	7.7%	✗	☹
To achieve a 2% reduction in burglary	- 9.5%	+4.4%	✓	☹
To achieve a burglary JD rate of 10%	9.8%	9.2%	✗	☺
To achieve an 8% reduction in autocrime	-0.2%	+7.8%	✗	☺
To achieve an autocrime JD rate of 8%	4.4%	4.4%	✗	☺
To increase the number of JDs for supply and PWI by 10% (compared with the level during 1998/9)				
All drugs	-4.3%	-19.8%	✗	☺
Class A drugs	+26.9%	-10.6%	✓	☺
Cocaine	+14.0%	-19.2%	✓	☹
Crack	+39.8%	-5.2%	✓	☺
Heroin	+26.1%	-17.8%	✓	☺
To refer 2000 drugs offenders into treatment from arrest referral schemes (April-Nov)	1247			☺
To achieve an 2.8% reduction in Total Notifiable Offences	-2.2%	+12.7%	✗	☺

Key:

✓	Target met at year end
✗	Target not met at year end
	Performance exceeding target
	Performance not meeting target
☺	Performance higher than last month
☹	Performance lower than last month
☺	No change in performance since last month
	In these areas, MPS performance is better in the year 2000/2001 than it was in 1999/2000.

1. HOMICIDE

- 1.1 There have been 189 homicides in the year April-March 2001 (compared with 187 in the previous year). During 2000/2001 170 homicides were cleared up, giving a clear-up rate of 89.9% for the year. This exceeds the 89% target, and the rate achieved in 1999/2000, which was 76.5%.

2. STREET CRIME

Street crime offences

- 2.1. The number of street crime offences recorded in March was 5,124 – the highest monthly total so far. The daily offence rate in March was 165, compared with 158 in February and 146 in January.
- 2.2 The year-to-date percentage increase remains at 18% for a second month.) Four boroughs: Ealing (down 1.3%), Greenwich (down 4.9%), Islington (down 8.7%) and Harrow (down 3.4%) continue to show reductions in street crime offences.

Street crime judicial disposals

- 2.3 The year-end JD rate for street crime was 8.2%, against a target of 9%. This is an improvement over the 1999/2000 average rate of 7.7%. Fourteen boroughs have achieved the JD target for the year, with rates up to 21.0% at Lewisham. JD rates at boroughs missing the target varied between 4.0% (Lambeth) and 8.8% (Bexley).

3. BURGLARY

Burglary offences

- 3.1. The level of burglary offences has substantially exceeded the 2% reduction target, coming in with a 9.5% reduction at year-end. There were 9736 burglary offences in March, compared to 9138 in February, and 10174 in March 2000. 24 boroughs achieved the target over the year, with reductions of up to 23.1% (Barking and Dagenham). Three boroughs have seen burglary increase over the year: Ealing (up 0.5%), Camden (up 2.2%) and Kensington and Chelsea (up 3.0%).

Burglary judicial disposals

- 3.2 The year-end judicial disposal rate for burglary was 9.8%, marginally below the target of 10%. At 9.7%, the JD rate in March is an improvement on the positions in February (8.2%) and January (7.3%). The year-end figure is an improvement on the 1999/2000 average performance of 9.2%. 15 boroughs exceed the JD target, including Hackney (15.5%) and Lewisham (20.9%).

4. AUTOCRIME

Autocrime offences

- 4.1 Autocrime offences at year-end show a slight decrease – down 0.2% when compared with the previous year. This is an improvement on the 7.8% growth in autocrime seen in 1999/2000, but fails to achieve the 8% reduction target.

There were 20598 autocrime offences in March 2001, compared with 21552 offences in March 2000. Four boroughs achieved the 8% reduction target over the year: Greenwich (down 9.3%), Southwark (down 9.5%), Croydon (down 12.1%) and Lambeth (down 12.8%).

Autocrime judicial disposals

- 4.2 JD rates continue to stand at 4.4% for the year, against the MPS target of 8%. One borough (Lewisham, 8.3%) is reaching the target level for the year.

5. DRUG CRIME

Drug judicial disposals

- 5.1. During 2000/2001, there were 1990 judicial disposals for supply and PWI to supply Class A drugs. This is 26.9% higher than performance over the year 1998/1999 (baseline year), and is achieving the target increase of 10%. The target is being achieved for each of the specific drug types focussed on (cocaine, crack and heroin). Performance overall (and particularly with regard to cocaine) has improved since Operation Crackdown. The number of JDs relating to all drugs has dropped over the year, and is 4.3% lower than the 1998/1999 level.

Drug offender referrals

- 5.2. The number of referrals for the first eight months of the year was 1247. This figure has not yet been updated. Around 188 referrals are now needed per month if the target of 2000 referrals is to be reached by the planning year-end. This target is on course to be delivered.

6. Total Notifiable Offences

- 6.1. There have been 994,233 total notifiable offences between April 2000 and March 2001, compared to 1,016,742 offences in the previous year. This is a 2.2% reduction, which falls short of the 2.8% reduction target, but is an improvement on the growth in TNOs of almost 13% seen in the previous year.
- 6.2. TNO judicial disposals stand at 12.1% at year-end, compared with 12.6% in 1999/2000.

7. EMERGENCY CALLS

999 Calls

- 7.1 The 80% target for answering 999 calls has been exceeded for the year, with 83.6% of calls being answered within 15 seconds. The number of 999 calls received showed a sharp increase in March. The 221109 calls received exceeded any month this year. The daily rate in March was up 11% on February, rising from 6400 calls per day to 7133 calls per day. This increase is explained, at least in part, by an increase in the number of silent mobile calls being forwarded to police operators. These calls had seen a reduction since the introduction of new operator protocols earlier in the year. The effect of the new regime does not appear to have been maintained. The number of

calls answered in target also exceeded any rate previously recorded this year, and remained within target for the month.

Immediate Incidents

- 7.2 The percentage of immediate incidents arrived at within the target time of 12 minutes was 76.4% for the year. The arrival rate in March (74.8%) was the lowest seen in any month this year.

8. DIVERSITY

- 8.1. The CRR training data stands at 30.3% of staff trained at the end of March 2001. During 2000/2001, the MPS achieved a judicial disposal rate for racial offences of 17.1% against a target of 15%.

9. POLICE COLLISIONS

- 9.1. The 2000/2001 policing plan set a number of targets to reduce police collisions. Provisional data to the end of March shows that five out of the six targets have been met. Whilst a 10% reduction in the total number of police collisions was not attained, the percentage of collisions where police driving was a contributory factor reduced from 42% in 1998/99 (baseline year) to 34%. The percentage of police collisions that resulted in personal injury has also reduced from 16.3% (1998/99) to 12.6%.

10. YOUTH OFFENDING

- 10.1. Data for the year to March shows that in 81.3% of cases, the time taken between arrest to case disposal for non-PYO's was within 28 days, achieving the 80% target set for 2000/01. The percentage of Persistent Young Offenders dealt with within 2 days for arrest to charge, and within 7 days for charge to first court listing was 54.9% and 65.5% respectively; below the 70% target. Likewise, the percentage of young offender results notified to PNC within 14 days was 69.3%; below the 80% target set for 2000/01. (Note: End of year data for youth offending for the months Apr-00 to Feb-01 is in the process of being reconciled, however this is unlikely to have much of an effect on the end of year percentages.)

11. RESOURCES

Recruitment and retention

- 11.1. The police strength at the end of March 2001 was 25,430, which is a shortfall of 169 on the Budget Workforce Target (BWT). However, this is an increase of 91 on the strength recorded in February 2001 (25,339). The police strength total excludes those officers on secondment to Essex, Hertfordshire and Surrey constabularies, however includes other secondments such as officers seconded to NCIS and other central service organisations.
- 11.2. At the end of March, there were 367 officers still on secondment to Essex, Hertfordshire and Surrey. 41 officers returned to the MPS during the month.

- 11.3. 4.1% of police strength are visible ethnic minority officers (target 5%), 15.7% are female (target 17%). These figures have remained almost static since January.
- 11.4. The civil staff strength at the end of March was 10,197, which is 914 (8.2%) short of the BWT. This is also a reduction of 110 from February. 15.5% of the civil staff are from visible ethnic minorities, whilst 58.6% of civil staff are female. Both of these remain static from February 2001.
- 11.5. The traffic warden strength was 698 at the end of March, 27% short of the BWT. This is a decrease of eight wardens from February. 12.5% of traffic wardens are visible ethnic minority staff (small increase from last month) and 60.8% are female (small decrease from February).

Metstats Charts

March 2001

Homicide

Street crime

Burglary

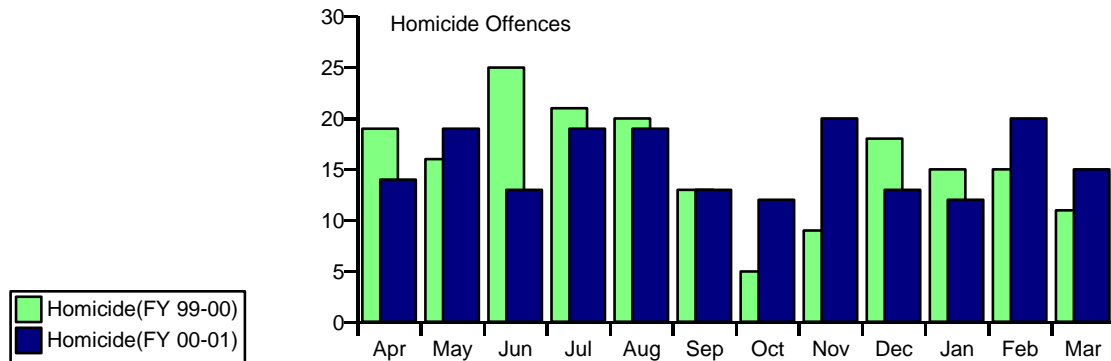
Autocrime

Emergency calls

Drug related crime

Performance Results - Homicide

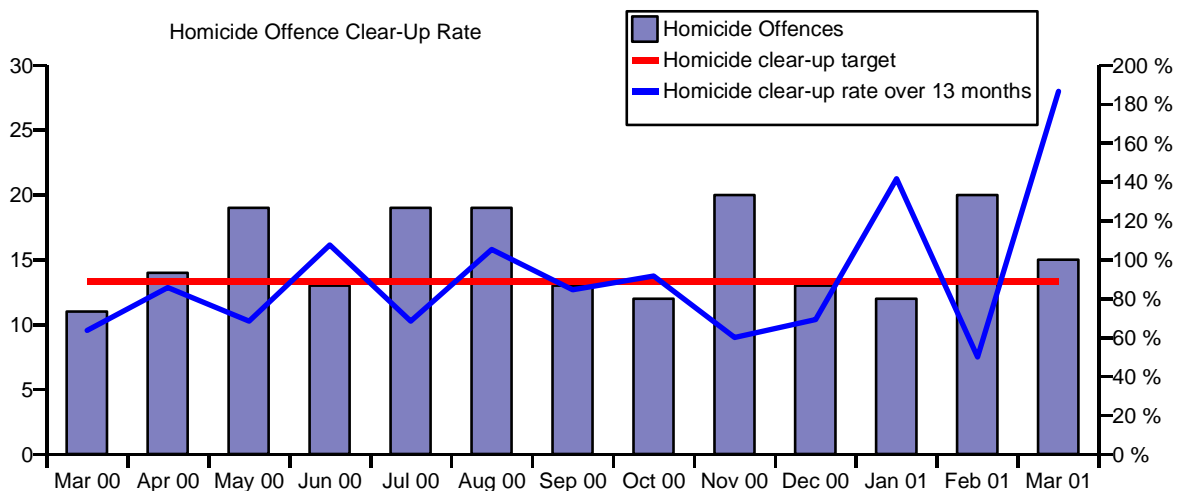
The figures for homicide reported below do not include offences or clear-ups for those parts of the former MPD now policed by county forces. Total homicides and clear-ups for the former MPD for fy99-00 are 191 and 146 respectively, giving a clear-up rate of 76.4%.



	Apr	May	Jun	Jul	Aug	Sep	Oct	Nov	Dec	Jan	Feb	Mar
Homicide(FY 99-00)	19	16	25	21	20	13	5	9	18	15	15	11
Homicides Cleared Up(FY 99-00)	12	15	14	12	15	13	8	9	10	16	12	7
Homicide(FY 00-01)	14	19	13	19	19	13	12	20	13	12	20	15
Homicides Cleared Up(FY 00-01)	12	13	14	13	20	11	11	12	9	17	10	28

	MPS	Figures financial year to date	MPS
Homicide(FY 99-00)	187	Homicide(FY 00-01)	189
Homicides Cleared Up(FY 99-00)	143	Homicides Cleared Up(FY 00-01)	170
Homicide Clear-up Rate	76.5 %	Homicide Clear-up rate to date	89.9 %

The homicide clear-up rate target is 89%

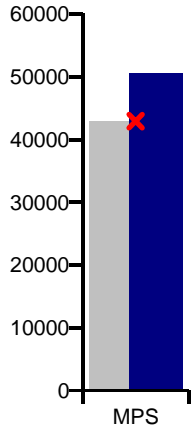


	Mar 00	Apr 00	May 00	Jun 00	Jul 00	Aug 00	Sep 00	Oct 00	Nov 00	Dec 00	Jan 01	Feb 01	Mar 01
Homicide Offences	11	14	19	13	19	19	13	12	20	13	12	20	15
Homicide Offences Cleared Up	7	12	13	14	13	20	11	11	12	9	17	10	28
Homicide clear-up rate	64 %	86 %	68 %	108 %	68 %	105 %	85 %	92 %	60 %	69 %	142 %	50 %	187 %

Performance Results - Volume Crime Analysis

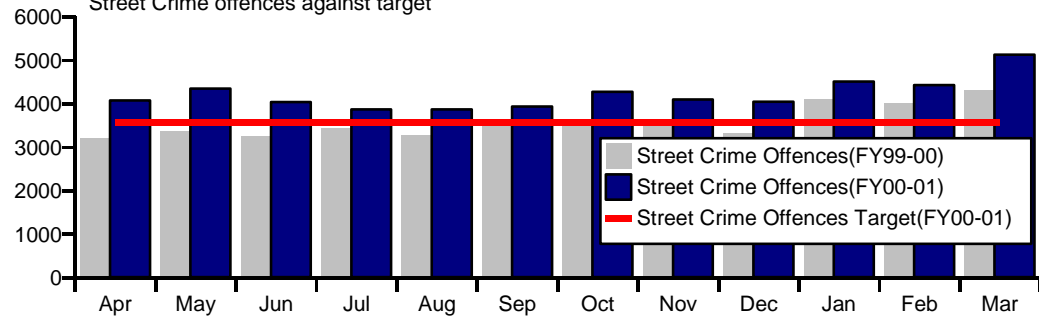
Street Crime

FYTD Street Crime offences against target



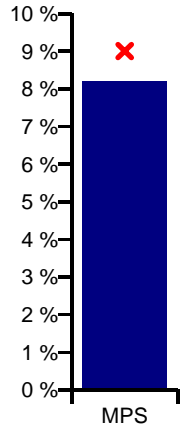
	MPS
Street Crime Offences(FYTD99-00)	42904
Street Crime Offences Target(FYTD00-01)	42904
Street Crime Offences(FYTD00-01)	50607

Street Crime offences against target



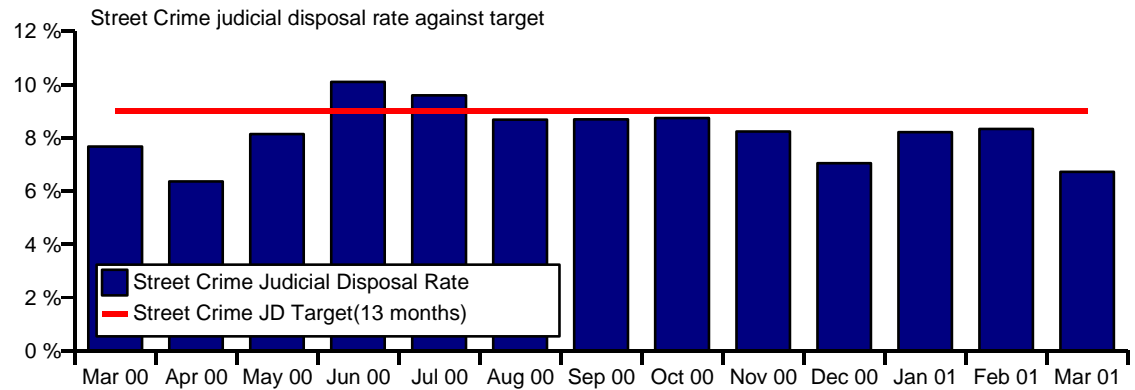
	Apr	May	Jun	Jul	Aug	Sep	Oct	Nov	Dec	Jan	Feb	Mar
Street Crime Offences(FY99-00)	3212	3369	3246	3441	3276	3483	3619	3488	3322	4110	4017	4321
Street Crime Offences Target(FY00-01)	3575	3575	3575	3575	3575	3575	3575	3575	3575	3575	3575	3575
Street Crime Offences(FY00-01)	4076	4343	4034	3867	3873	3936	4271	4097	4046	4510	4430	5124

FYTD Street Crime JD rate against target



	MPS
Street Crime JD Rate (FYTD00-01)	8.2 %
Street Crime JD Target(FYTD00-01)	9.0 %

Street Crime judicial disposal rate against target

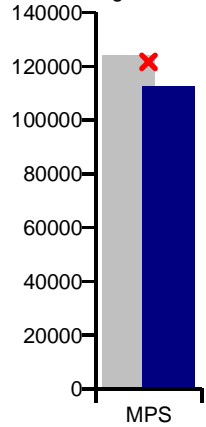


	Mar 00	Apr 00	May 00	Jun 00	Jul 00	Aug 00	Sep 00	Oct 00	Nov 00	Dec 00	Jan 01	Feb 01	Mar 01
Street Crime Judicial Disposal Rate	7.7 %	6.4 %	8.1 %	10.1 %	9.6 %	8.7 %	8.7 %	8.7 %	8.2 %	7.0 %	8.2 %	8.3 %	6.7 %

Performance Results - Volume Crime Analysis

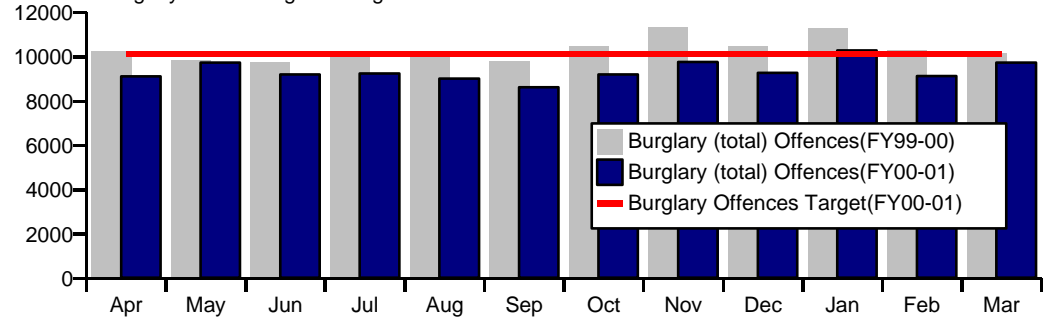
Burglary

FYTD Burglary offences against target



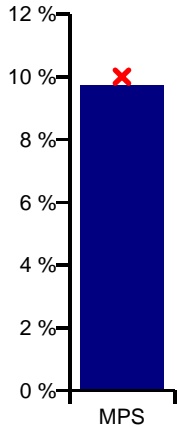
	MPS
Burglary (total) Offences(FYTD99-00)	124152
Burglary Offences Target(FYTD00-01)	121669
Burglary (total) Offences(FYTD00-01)	112376

Burglary offences against target



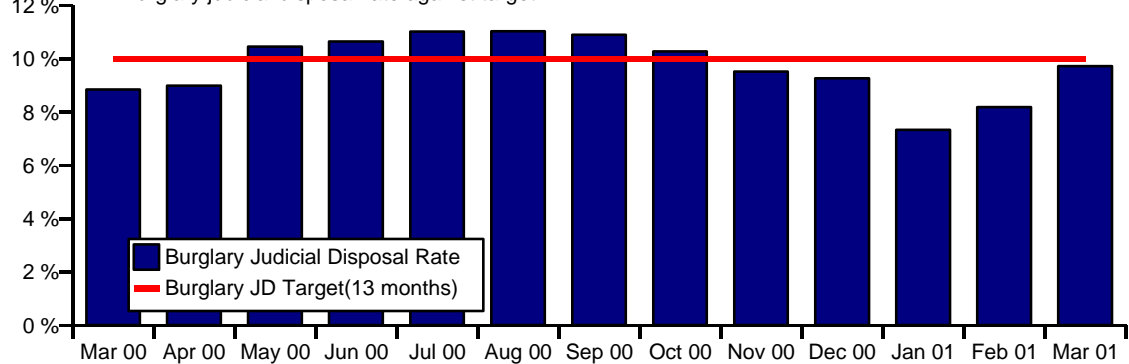
	Apr	May	Jun	Jul	Aug	Sep	Oct	Nov	Dec	Jan	Feb	Mar
Burglary (total) Offences(FY99-00)	10259	9851	9745	10024	10275	9826	10507	11376	10502	11311	10302	10174
Burglary Offences Target(FY00-01)	10139	10139	10139	10139	10139	10139	10139	10139	10139	10139	10139	10139
Burglary (total) Offences(FY00-01)	9120	9745	9211	9256	9013	8630	9203	9770	9269	10285	9138	9736

FYTD Burglary JD rate against target



	MPS
Burglary Judicial Disposal Rate (FYTD00-001)	9.8%
Burglary JD Target(FYTD00-01)	10.0%

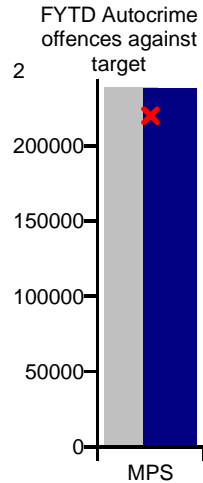
Burglary judicial disposal rate against target



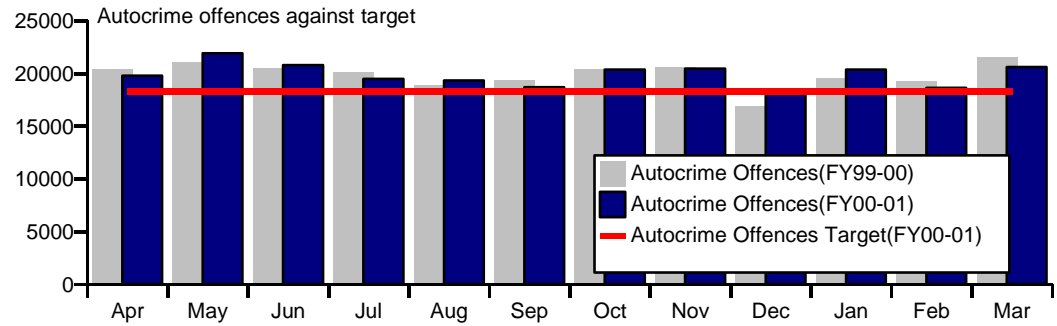
	Mar 00	Apr 00	May 00	Jun 00	Jul 00	Aug 00	Sep 00	Oct 00	Nov 00	Dec 00	Jan 01	Feb 01	Mar 01
Burglary Judicial Disposal Rate	8.8%	9.0%	10.5%	10.7%	11.0%	11.0%	10.9%	10.3%	9.5%	9.3%	7.3%	8.2%	9.7%

Performance Results - Volume Crime Analysis

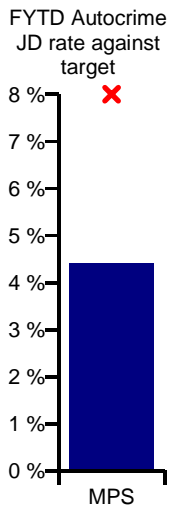
Autocrime



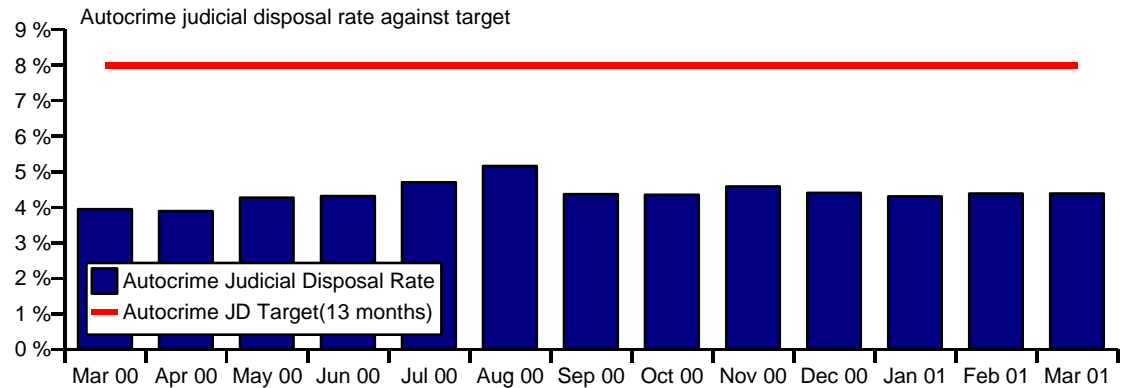
	MPS
Autocrime Offences(FYTD99-00)	238908
Autocrime Offences Target(FYTD00-01)	219795
Autocrime Offences(FYTD00-01)	238492



	Apr	May	Jun	Jul	Aug	Sep	Oct	Nov	Dec	Jan	Feb	Mar
Autocrime Offences(FY99-00)	20402	21102	20540	20151	18930	19403	20381	20608	16939	19607	19293	21552
Autocrime Offences Target(FY00-01)	18316	18316	18316	18316	18316	18316	18316	18316	18316	18316	18316	18316
Autocrime Offences(FY00-01)	19795	21921	20793	19478	19345	18697	20362	20463	18046	20364	18630	20598



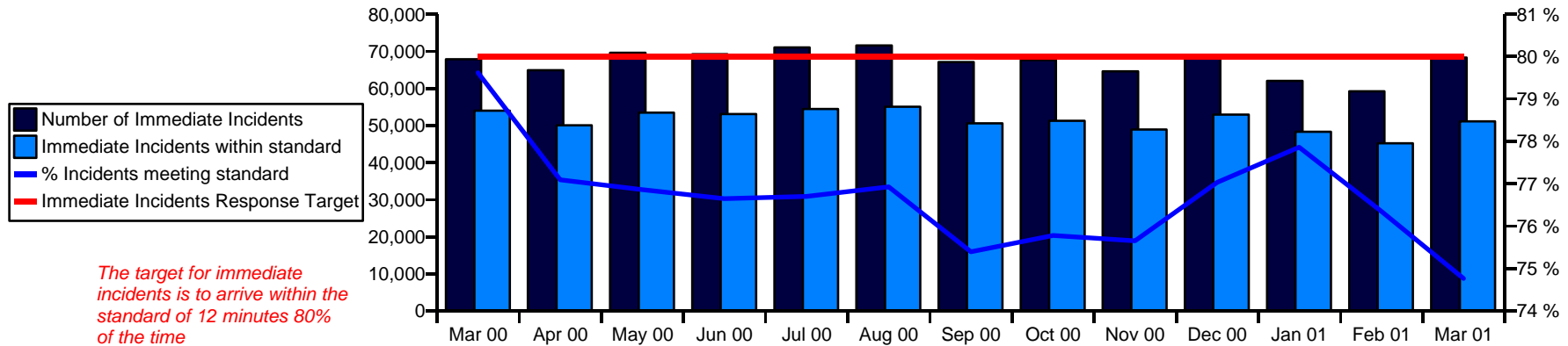
	MPS
Autocrime Judicial Disposal Rate (FYTD 00-01)	4.4 %
Autocrime JD Target(FYTD00-01)	8.0 %



	Mar 00	Apr 00	May 00	Jun 00	Jul 00	Aug 00	Sep 00	Oct 00	Nov 00	Dec 00	Jan 01	Feb 01	Mar 01
Autocrime Judicial Disposal Rate	3.9 %	3.9 %	4.3 %	4.3 %	4.7 %	5.2 %	4.4 %	4.3 %	4.6 %	4.4 %	4.3 %	4.4 %	4.4 %

Response to Emergency Calls

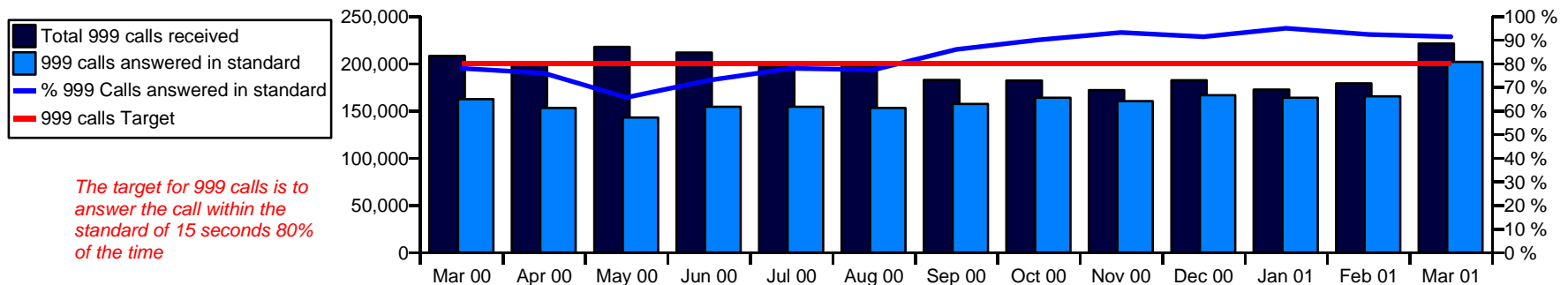
Response to Immediate Incidents



The target for immediate incidents is to arrive within the standard of 12 minutes 80% of the time

	Mar 00	Apr 00	May 00	Jun 00	Jul 00	Aug 00	Sep 00	Oct 00	Nov 00	Dec 00	Jan 01	Feb 01	Mar 01
Number of Immediate Incidents	67822	64906	69575	69206	70966	71525	67095	67597	64572	68687	62044	59170	68307
Immediate Incidents within standard	53993	50034	53475	53043	54430	55017	50583	51221	48848	52909	48306	45173	51065
% Incidents meeting standard	79.6 %	77.1 %	76.9 %	76.6 %	76.7 %	76.9 %	75.4 %	75.8 %	75.6 %	77.0 %	77.9 %	76.3 %	74.8 %

999 Calls



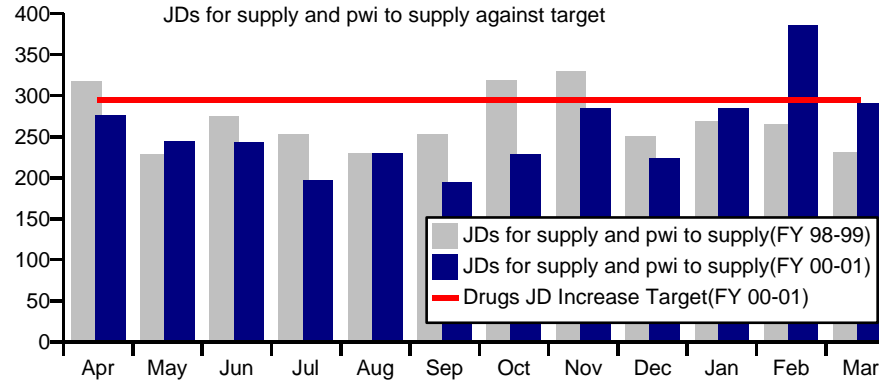
The target for 999 calls is to answer the call within the standard of 15 seconds 80% of the time

	Mar 00	Apr 00	May 00	Jun 00	Jul 00	Aug 00	Sep 00	Oct 00	Nov 00	Dec 00	Jan 01	Feb 01	Mar 01
Total 999 calls received	208185	201510	217637	211640	198067	198087	182979	182256	171999	182595	172631	179178	221109
999 calls answered within standard	162384	153148	143070	154515	154454	153331	157307	164049	160346	166776	163896	165390	201997
% 999 Calls answered in standard	78.0 %	76.0 %	65.7 %	73.0 %	78.0 %	77.4 %	86.0 %	90.0 %	93.2 %	91.3 %	94.9 %	92.3 %	91.4 %

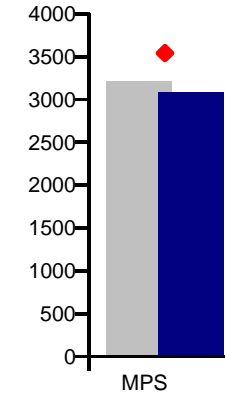
Drug related crime

Judicial disposals for supply and PWI against target

The monthly target for judicial disposals for supply and possession with intent to supply for 2000/1 is 295. This is based on a 10% increase on the 1998/1999 monthly average of 268



FYTD JDs for supply and pwi to supply against target

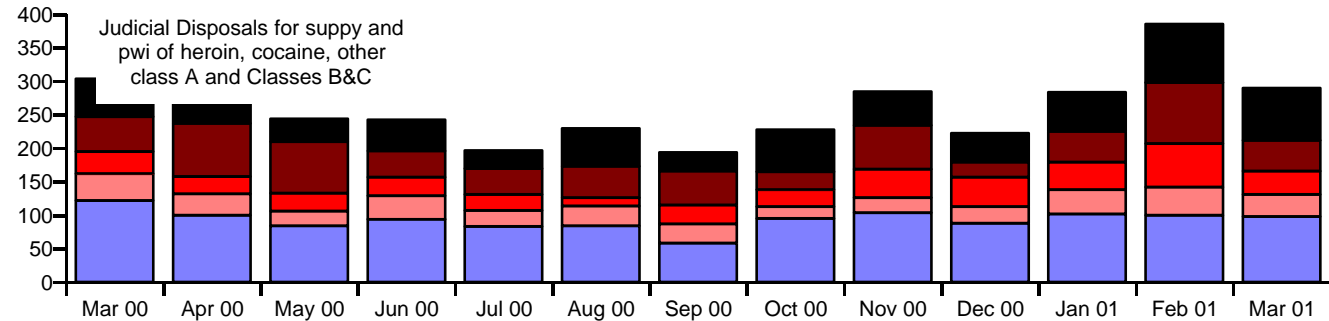


	MPS
JDs for supply and pwi to supply (FYTD 98-99)	3217
Drugs JD Increase Target (FYTD 00-01)	3539
JDs for supply and pwi to supply (FYTD 00-01)	3080
FYTD % change JDs for drugs	-4.3 %

	Apr	May	Jun	Jul	Aug	Sep	Oct	Nov	Dec	Jan	Feb	Mar
JDs for supply and pwi to supply (FY 98-99)	317	228	275	253	229	253	318	329	250	269	265	231
JDs for supply and pwi to supply (FY 00-01)	276	244	243	197	230	194	228	285	223	284	386	290

Judicial disposals for supply and PWI, showing drug types

- JDs for supply and pwi of crack
- JDs for supply and pwi of heroin
- JDs for supply and pwi of cocaine
- JDs for supply and pwi of other class A drugs
- JDs for supply and pwi of class B&C drugs



	Mar 00	Apr 00	May 00	Jun 00	Jul 00	Aug 00	Sep 00	Oct 00	Nov 00	Dec 00	Jan 01	Feb 01	Mar 01
JDs for supply and pwi of crack	57	39	34	47	27	57	28	63	51	44	59	88	78
JDs for supply and pwi of heroin	52	79	77	39	39	47	51	27	65	22	46	91	46
JDs for supply and pwi of cocaine	33	26	27	28	24	12	28	25	43	44	41	65	35
JDs for supply and pwi of other class A drugs	40	32	22	35	24	30	29	18	22	25	36	42	33
JDs for supply and pwi of class B&C drugs	122	100	84	94	83	84	58	95	104	88	102	100	98

Performance Indicators, March 2001

Crime and Disorder						
Code	Indicator	Performance Target for 2000/2001	Actual Performance (March 2001)	Twelve month average or total to March 2001	Comments	Flag
Homicide Targets						
C1	The percentage of homicides cleared up	To achieve a clear up rate of 89%	186.7%	89.9%	March Figures: 15 offences, 28 clear ups	☺
Burglary Targets						
C2	The number of recorded burglaries (residential and commercial)	To reduce burglary by 2% (GOV)	-4.3%	-9.5%	Actual performance shows comparison with March 2000	☺
C3	The percentage of judicial disposals secured for recorded burglary offences.	To achieve a judicial disposal rate of 10%	9.7%	9.8%		☹
C4 (BVPI126)	Domestic burglaries per 1,000 households	2% reduction on 1999/2000 (i.e. 24.8 burglaries per 1000 households)	23.4	22.5	March data annualised to provide direct comparison with 12 month figure	☺
C5 (BVPI126)	Domestic burglaries - percentage detected.	10% Judicial Disposals	8.5%	9.2%		☹
C6 (BVPI155)	Percentage of domestic burglaries where the property had been burgled in the past twelve months.	This is a new PI, the absence of any historical data precludes the setting of a meaningful target this year			New PI, relevant data not yet available	◆
Street Crime Targets						
C7	The number of recorded street crimes	To achieve zero growth in street crime	18.6%	18.0%	Actual performance shows comparison with March 2000	☹
C8 (BVPI127)	Street Crimes per 1,000 population	0% reduction on 1999/2000 (i.e. to remain at 5.9 per 1000 population)	8.3	7.0	March data annualised to provide direct comparison with 12 month figure	☹
C9 (BVPI127)	Street Crimes - percentage detected.	9% Judicial Disposals	6.7%	8.1%		☹
Autocrime Targets						
C10	The number of recorded autocrime	To reduce autocrime by 8% (GOV)	-4.4%	-0.2%	Actual performance shows comparison with March 2000	☹
C11 (BVPI128)	Autocrimes per 1,000 population	8% reduction on 1999/2000 (i.e. 30.2 Autocrimes per 1000 population)	33.3	32.8	March data annualised to provide direct comparison with 12 month figure	☹
C12 (BVPI128)	The percentage of judicial disposals secured for recorded vehicle crime offences.	Judicial disposal rate of 8%	4.4%	4.4%		☹
Violent Crime Targets						
C13 (BVPI127)	Violent crimes per 1,000 population	No specific targets set in 2000/2001 Policing Plan	29.9	28.2	March data annualised to provide direct comparison with 12 month figure	
C14 (BVPI127)	Violent crimes - percentage detected (Judicial Disposals)	No specific targets set in 2000/2001 Policing Plan	14.6%	16.0%		
C15 (BVPI153)	Percentage of reported domestic violence incidents where there was a power of arrest, in which an arrest was made relating to the incident.	This is a new PI, the absence of any historical data precludes the setting of a meaningful target this year			New PI, relevant data not yet available	◆
C16 (BVPI154)	Percentage of victims of reported domestic violence incidents that were victims of a reported domestic violence incident in the previous twelve months.	Target to be determined			New PI, relevant data not yet available	◆
Drug Crime Targets						
C17	The number of judicial disposals for supply and possession with intent to supply	Increase judicial disposals for supply and possession with intent to supply by 10% against the baseline of 1998/9 (GOV)	6.1%	-4.3%	Rolling year to March 2001 compared with 1998/9 baseline	☹
C17 A	The number of judicial disposals for supply and possession with intent to supply for Cocaine	No specific target set	18.1%	14.0%	Rolling year to March 2001 compared with 1998/9 baseline	☺
C17 A	The number of judicial disposals for supply and possession with intent to supply for Heroin	No specific target set	8.5%	26.1%	Rolling year to March 2001 compared with 1998/9 baseline	☺
C17 A	The number of judicial disposals for supply and possession with intent to supply for Crack	No specific target set	108.7%	39.8%	Rolling year to March 2001 compared with 1998/9 baseline	☺

Performance Indicators, March 2001

Code	Indicator	Performance Target for 2000/2001	Actual Performance (March 2001)	Twelve month average or total to March 2001	Comments	Flag
C17 A	The number of judicial disposals for supply and possession with intent to supply for class A	Increase judicial disposals for supply and possession with intent to supply by 10% against the baseline of 1998/9 (GOV)	44.2%	26.9%	Rolling year to March 2001 compared with 1998/9 baseline	😊
C18 (BVPI129)	Number of offenders dealt with for supply offences in respect of Class A drugs per 10,000 population.	This is a new PI, the absence of any historical data precludes the setting of a meaningful target this year			Data to be provided from Home Office sources	
C19 (BVPI137)	The percentage of offenders referred into treatment from arrest referral schemes	This is a new PI, the absence of any historical data precludes the setting of a meaningful target this year. The MPS target set to refer 2000 offenders into treatment from arrest referral schemes.		0.67%	Arrest referral schemes have been in place in all boroughs since 1 April, data relates to April to November 2000 only. 1247 offenders referred into treatment.	😊
Total Crime						
C20 (BVPI125)	Total recorded crimes per 1,000 population	No specific target in Policing Plan as initiatives relate to specific offences, however, it is anticipated that these will lead to a 2.8% reduction in the 1999/2000 figure of 141.6 crimes per 1000 population (i.e. 135.8)	139.9	136.6	March data annualised to provide direct comparison with 12 month figure	😐
C21 (BVPI125)	Total recorded crimes - percentage detected (judicial disposals).	No target shown in the 2000/2001 performance plan for TNO's, targets set for specific offences.	12.0%	12.1%		
Disorder						
C22 (BVPI130)	Number of public disorder incidents per 1,000 population.	No target set at MPS level (it is anticipated that targets will be set at a borough level as part of local Crime and Disorder strategies)	58.3	58.9		
Arrests						
C23 (BVPI136)	Percentage of persons arrested for notifiable offences who were charged/reported for summons or cautioned.	This is a new PI, the absence of any historical data precludes the setting of a meaningful target this year			Relevant data not yet available	
Diversity						
Victim Satisfaction						
D1	The gap between the levels of satisfaction in the service received from police expressed by victims of racially motivated crime and victims of all crime	To achieve parity in the level of satisfaction recorded amongst victims of racially motivated crime and the victims of other crimes	4.4%	6.7%	New indicator, actual performance relates to October to December 2000 quarter. 12 month data relates to April to December 2000.	😞
Crime						
D2 (BVPI141)	The percentage of reported racist incidents where further investigation is taken	To investigate 100% of cases	100.0%	100.0%	It is MPS policy to investigate all racist incidents	😊
D3 (BVPI141)	The percentage of reported racially aggravated crimes detected	No target shown in 2000/2001 Performance Plan	15.3%	25.0%	March data not yet available. Most recent data relates to February.	
D4	The number of racial offences	Target setting is inappropriate at this stage, as several initiatives impacting upon the number of offences reported are in their infancy.	Total notifiable offences 15059 All offences 16213	Total notifiable offences 16981 All offences 18253	Current month's data has been annualised to provide a comparison with the 12 month figure, most recent data relates to March	
D5	The number of racist incidents reported	It should be possible to set robust targets in the future, once the impact of these initiatives has been assessed over a longer period of time.	17791	20628	Current month's data has been annualised to provide a comparison with the 12 month figure, most recent data relates to March	
D6	The percentage of judicial disposals secured for recorded racially motivated offences	To achieve a disposal rate of 15%	15.4%	17.1%		😊
D7	The number of proactive initiatives aimed at the detection or disruption of offenders for race and hate crime	To undertake at least 250 proactive initiatives during 2000/01		197	12 month data relates to April to December only.	😐
Recruitment						
D8 (BVPI25a)	Percentage of minority ethnic community police officers in the force	5% in current year (10.3% in five years and 25% in ten years) (GOV)	4.15%	4.03%	Using figures to March 2001	😞

Performance Indicators, March 2001

Code	Indicator	Performance Target for 2000/2001	Actual Performance (March 2001)	Twelve month average or total to March 2001	Comments	Flag
D9 (BVPI25b)	Percentage of minority ethnic police officers in the force compared to the percentage of minority ethnic population of working age			1:6.2		
Stop and Search						
D10 (BVPI138)	Number of Police and Criminal Evidence Act (PACE) stops or searches of white persons per 1,000 population	No target set	17.0	16.1	Actual performance relates to January (annualised to provide direct comparison with 12 month figure) , 12 month figure relates to the year to January 2001	
D11 (BVPI138)	Percentage of Police and Criminal Evidence Act (PACE) stops or searches of white persons leading to arrest.	No target set	15.0%	15.9%	February data not yet available, most recent data relates to January	
D12 (BVPI139)	Number of PACE stops or searches of minority ethnic persons per 1,000 population	No target set	51.1	47.2	Actual performance relates to January (annualised to provide direct comparison with 12 month figure) , 12 month figure relates to the year to January 2001	
D13 (BVPI139)	Percentage of PACE stops or searches of minority ethnic persons leading to arrest.	No target set	16.8%	17.3%	February data not yet available, most recent data relates to January	
Training						
D14	The percentage of London boroughs which have received borough based community and race relations training	To provide training for 50% of all London boroughs by the end of March 2001		27.3%	Training complete on nine boroughs and is currently in progress in six others	☹
D14A	The percentage of staff which have received borough based community and race relations training	To provide training for 40% of identified staff by the end of March 2001		30.3%	To date 11242 staff have been trained. Of this total 7456 borough staff have been trained.	☹
Response						
Response to Emergencies						
R1 (BVPI133)	Percentage of responses to incidents requiring immediate response within local target response times	80%	74.8%	76.4%		☹
R2 (BVPI134)	Percentage of 999 calls answered within local target response time.	80%	91.4%	83.6%		☺
Police Collisions						
R3	The total number of Police collisions	To achieve a 10% reduction on the 1998/9 figure of 5947 collisions (i.e. 5352 collisions)	4615	6151	March data has been annualised to allow for comparison with the twelve months to March	☹
R4	The percentage of Police collisions where police driving was a contributory factor as determined by the investigating officer	To achieve a 10% reduction in the 1998/9 percentage of 41.8% of collisions where police driving was a contributory factor (i.e. 37.6% of collisions)	25.5%	33.6%	Actual performance refers to March, 12 month performance relates to the period April 2000 to March 2001	☺
R5	The number of Police collisions occurring while responding to emergency calls per 1,000 emergency calls	To achieve a 10% reduction on the 1998/9 figure of 2.23 collisions per 1000 emergency calls (i.e. 2.00 collisions per 1000)	1.22	1.66	Actual performance refers to March, 12 month performance relates to the period April 2000 to March 2001	☺
R6	The number of Police collisions occurring while responding to emergency calls where police driving was a contributory factor, as determined by the investigating officer, per 1,000 emergency calls	To achieve a 10% reduction on the 1998/9 figure of 0.94 collisions per 1000 emergency calls where police driving was a contributory factor (i.e. 0.84 collisions per 1000)	0.32	0.53	Actual performance refers to March, 12 month performance relates to the period April 2000 to March 2001	☺
R7	The number of Police collisions resulting in personal injury	To achieve a 10% reduction on the 1998/9 figure of 978 collisions resulting in personal injury (i.e. 880 collisions)	565	775	Actual performance refers to March, 12 month performance relates to the period April 2000 to March 2001	☺
R8	The number of Police collisions resulting in personal injury as a percentage of total collisions	To achieve a 10% reduction in the 1998/9 percentage of 16.3% of collisions resulting in personal injury (i.e. 14.7% of collisions)	12.2%	12.6%	Actual performance refers to March, 12 month performance relates to the period April 2000 to March 2001	☺
Road Traffic Collisions						

Performance Indicators, March 2001

Code	Indicator	Performance Target for 2000/2001	Actual Performance (March 2001)	Twelve month average or total to March 2001	Comments	Flag
R9 (BVPI132)	Number of road traffic collisions involving death or serious injury per 1,000 population.	4% reduction on 1994/8 baseline (equivalent of 0.77 KSI's per 1000 population) (GOV)	0.70	0.77	Latest data is for January (12 month figure based on 12 months to January 2001)	☹

Human Resources

H1 (BVPI24)	Percentage of police officer strength which is female.	17% in current year (<i>Target at present is only provisional</i>)	15.75%	15.61%	Using figures to March 2001	
H2 (BVPI25a)	Percentage of minority ethnic community police officers in the force	5% in current year (10.3% in five years and 25% in ten years) (GOV)	4.15%	4.03%	Using figures to March 2001	☹
H3 (BVPI25b)	Percentage of minority ethnic police officers in the force compared to the percentage of minority ethnic population of working age			1:6.2		
H4 (BVPI26)	Number of working days lost through sickness per police officer	9 days per year	13.8	10.9	March data not yet available, most recent data relates to 12 months to February 2001 (provisional data)	☹
H5 (BVPI26)	Number of working days lost through sickness per civilian employee.	10 days per year	13.5	11.9	March data not yet available, most recent data relates to 12 months to February 2001 (provisional data)	☹
H6 (BVPI27)	Percentage staff turnover of police officers.	5% (<i>target at present is only provisional</i>)	6.5%	5.8%	Most recent data relates to 12 months to March 2001	
H7 (BVPI27)	Percentage staff turnover civilian employees.	15% (<i>target at present is only provisional</i>)	22.7%	15.7%	Most recent data relates to 12 months to March 2001	
H8 (BVPI28)	Percentage of police officers in operational posts;	No target set (<i>benchmarking information</i>)		87.2	To be calculated once a year. Position as at March 2000	
H9 (BVPI28)	Percentage of police officers in operational support posts;	No target set (<i>benchmarking information</i>)		9.4	To be calculated once a year. Position as at March 2000	
H10 (BVPI28)	Percentage of police officers in organisational support posts.	No target set (<i>benchmarking information</i>)		3.4	To be calculated once a year. Position as at March 2000	
H11 (BVPI29)	Number of medical retirements of police officers as a percentage of all officer retirements;	33%	48.3%	32.1%	Most recent data relates to 12 months to March 2001	☺
H12 (BVPI29)	Number of medical retirements of civilian employees as a percentage of all civilian retirements.	33%	54.8%	37.3%	Most recent data relates to 12 months to March 2001	☺
H13	The total number police officers	25600	25430.5	25376.9	Average strength relates to April 2000 to March 2001 (i.e. strength since boundary changes)	☹

Complaints

COM1 (BVPI21)	Number of complaints per 1,000 officers.	Target to be based on a 3 year development plan	189.4	223.5	March data annualised for comparison. 12 month data actually relates to April 2000 to March 2001 only.	
COM2 (BVPI22)	Percentage of complaints substantiated.	Target not yet set (to be determined during 2000)	2.03%	2.21%	March data annualised for comparison. 12 month data actually relates to April 2000 to March 2001 only.	☹
COM3 (BVPI151)	Percentage of complaints resolved informally.	Target to be determined	27.99%	30.25%	March data annualised for comparison. 12 month data actually relates to April 2000 to March 2001 only.	
COM4 (BVPI140)	Number of substantiated complaints under Police Act 1996 by detainees per 10,000 people detained.	Target to be based on a 3 year development plan	0.44	0.73	March data annualised for comparison. 12 month data actually relates to April 2000 to March 2001 only.	

Performance Indicators, March 2001

Code	Indicator	Performance Target for 2000/2001	Actual Performance (March 2001)	Twelve month average or total to March 2001	Comments	Flag
Customer Satisfaction						
S1 (BVPI120)	Level of crime (using British Crime Survey).	This is a new PI, the absence of any historical data precludes the setting of a meaningful target this year			Indicator based on British Crime Survey, data not yet available	♦
S2 (BVPI121)	Fear of crime (using British Crime Survey).	This is a new PI, the absence of any historical data precludes the setting of a meaningful target this year			Indicator based on British Crime Survey, data not yet available	♦
S3 (BVPI122)	Feelings of public safety (using British Crime Survey).	This is a new PI, the absence of any historical data precludes the setting of a meaningful target this year			Indicator based on British Crime Survey, data not yet available	♦
S4 (BVPI123)	Public confidence in the criminal justice system or its component parts (using British Crime Survey).	This is a new PI, the absence of any historical data precludes the setting of a meaningful target this year			Indicator based on British Crime Survey, data not yet available	♦
S5 (BVPI23a)	Percentage of the public satisfied with police action in response to 999 calls	90%	79.6%	78.2%	Quarterly report, actual performance relates to the 4th quarter of 2000, 12 month figure relates to quarters 2,3 and 4 only due to the new format of the questionnaire	☹
S6 (BVPI23b)	Percentage of people satisfied with the service received at police station enquiry counters	80%	75.3%	73.5%	Quarterly report, actual performance relates to the 4th quarter of 2000, 12 month figure relates to quarters 2,3 and 4 only due to the new format of the questionnaire	☹
S7 (BVPI23c)	Percentage of victims satisfied with police initial response to a report of violent crime	90%	72.0%	75.0%	Quarterly report, actual performance relates to the 4th quarter of 2000, 12 month figure relates to quarters 2,3 and 4 only due to the new format of the questionnaire	☹
S8 (BVPI23d)	Percentage of victims satisfied with police initial response to a report of a burglary of a dwelling	90%	82.8%	83.7%	Quarterly report, actual performance relates to the 4th quarter of 2000, 12 month figure relates to quarters 2,3 and 4 only due to the new format of the questionnaire	☹
S9 (BVPI23e)	Percentage of victims of road traffic collisions satisfied with the police service at the scene of the collision	90%	92.5%	91.8%	Quarterly report, actual performance relates to the 4th quarter of 2000, 12 month figure relates to quarters 2,3 and 4 only due to the new format of the questionnaire	☺

Youth Offending						
Y3	The number of truancy initiatives conducted on each borough.	Each borough identified by the DfEE as having a high incidence of truancy to undertake (preferably in partnership with the local authority) one initiative, for the minimum of one day, each school term.		27	There have been 27 initiatives in 11 of the 12 designated boroughs during the Autumn term.	☹
Y4	The extent to which the MPS meets the Government targets for the time taken to deal with persistent young offenders (PYO) from arrest to charge (Government target of 2 days).	To meet the Government targets in 70% of cases by the end of 2000 (GOV)	61.48%	54.95%	Monthly data is for March 2001. Year end data is provisional.	☹
Y5	The extent to which the MPS meets the Government targets for the time taken to deal with persistent young offenders (PYO) from charge to first court listing (Government target of 7 days).	To meet the Government targets in 70% of cases by the end of 2000 (GOV)	77.43%	65.50%	Monthly data is for March 2001. Year end data is provisional.	☹
Y6	Non-PYOs arrest to case disposal	Within 28 days from arrest to case disposal (standard set for 1999/2000 was to meet this target in 80% of cases, this target related to all young offenders including PYOs)	82.70%	81.28%	Monthly data is for March 2001. Year end data is provisional.	☺
Y7	The time taken to notify the Police National Computer (PNC) of the results of the results of all young offender case disposals, including court sentencing.	Within 14 days or less of the case disposal or sentence in 80% of cases (1999/2000 target of 60% was achieved, target raised for 2000/1)	73.74%	69.31%	Monthly data is for March 2001. Year end data is provisional.	☹

Performance Indicators, March 2001

Code	Indicator	Performance Target for 2000/2001	Actual Performance (March 2001)	Twelve month average or total to March 2001	Comments	Flag
Y8 (BVPI 131)	Percentage of all full youth files provided to the Crown Prosecution Service both within pre-trial issue time guidelines and which are fully satisfactory or sufficient to proceed;	Targets to be set with CPS as part of Joint Performance Management	65.78%	71.90%	Monthly data relates to February 2001. Annual data relates to data for period April 2000 - February 2001.	
Y9 (BVPI 131)	Percentage of all expedited/remand youth files provided to the Crown Prosecution Service which are fully satisfactory or sufficient to proceed	Targets to be set with CPS as part of Joint Performance Management	99.17%	99.00%	Monthly data relates to February 2001. Annual data relates to data for period April 2000 - February 2001.	

Miscellaneous

M1 (BVPI19)	Has HMIC assessed the force as having achieved its efficiency target in the last year?			Yes		☺ ♦
M2 (BVPI20)	Annual estate running costs (excluding repairs and maintenance) per square metre.	No target set (<i>benchmarking information</i>)		£174		♦⌘
M3 (BVPI124)	Actual net revenue expenditure per 1,000 population.	No target set (<i>benchmarking information</i>)		£253,709		♦⌘
M4 (BVPI152)	Percentage of police authority buildings open to the public which are suitable for and accessible for disabled people.	68% (i.e. 130 out of 191 buildings in current year) (GOV)		44%	This indicator will be calculated once annually. This figure relates to 1999-2000.	☹ ♦⌘
M5 (BVPI131)	Percentage of all full files provided to the Crown Prosecution Service both within pre-trial issue time guidelines and which are fully satisfactory or sufficient to proceed	Targets to be set with CPS as part of Joint Performance Management	66.8%	67.0%	Monthly data relates to February 2001. Annual data relates to data for period April 2000 - February 2001.	
M6 (BVPI131)	Percentage of all expedited/remand files provided to the Crown Prosecution Service which are fully satisfactory or sufficient to proceed	Targets to be set with CPS as part of Joint Performance Management	98.9%	98.7%	Monthly data relates to February 2001. Annual data relates to data for period April 2000 - February 2001.	

Key

(GOV) Indicates nationally set targets determined by the government.

This figure will not change as it is calculated annually ♦

☺	Performance year to date indicates target likely to be met at year end
☹	Performance year to date indicates target unlikely to be met at year end
☺	Uncertain whether target will be met at year end
	No target set or awaits development

New indicator, no data available yet ♦

Information shown in Annex B of 2000/2001 Performance Plan ⌘

NOTE: Latest mid-year estimate (1999) have been used as the population base