

Welcome

About this exhibition

Welcome to this public exhibition on the proposals to provide an essential new police facility for Wandsworth.

The new Custody Centre we are proposing for the borough is part of a wider drive to improve policing across the capital and, most importantly, here in Wandsworth.

This new facility will help us significantly improve the way we police the borough, provide a better working environment for our staff and officers and help make Wandsworth safer for residents.

This exhibition will provide you with an opportunity to view our plans and discuss them with your borough policing team before a planning application is submitted to Wandsworth council later in the autumn.

David Musker
Wandsworth Borough Commander



Policing in Wandsworth

Some of the challenges we face

In Wandsworth we face a number of difficulties with our current custody arrangements:

There are 21 custody cells for the whole borough (with the addition of another five which are not used daily). This is not always sufficient and will become even more challenging as new developments in and around the borough come on stream and our population continues to grow and diversify.

The current cells are in need of improvement – many were built over 30 years ago, and some almost 100 years ago, and do not meet today's modern standards.

Our custody cells are currently split across three locations in Battersea, Wandsworth and Tooting Police Stations. This means we are not using our facilities very efficiently and arresting officers are often forced to spend additional time travelling between various sites. The cells at Tooting are not in continuous use due to the lack of available staff to serve three separate locations.

All these issues are costly and time-consuming. We need to change things now as the demand on the current facilities in Wandsworth is set to increase with the growing population and the professional requirements of our staff and officers. It is therefore essential that custody cell capacity is increased and the standard of facilities improved.



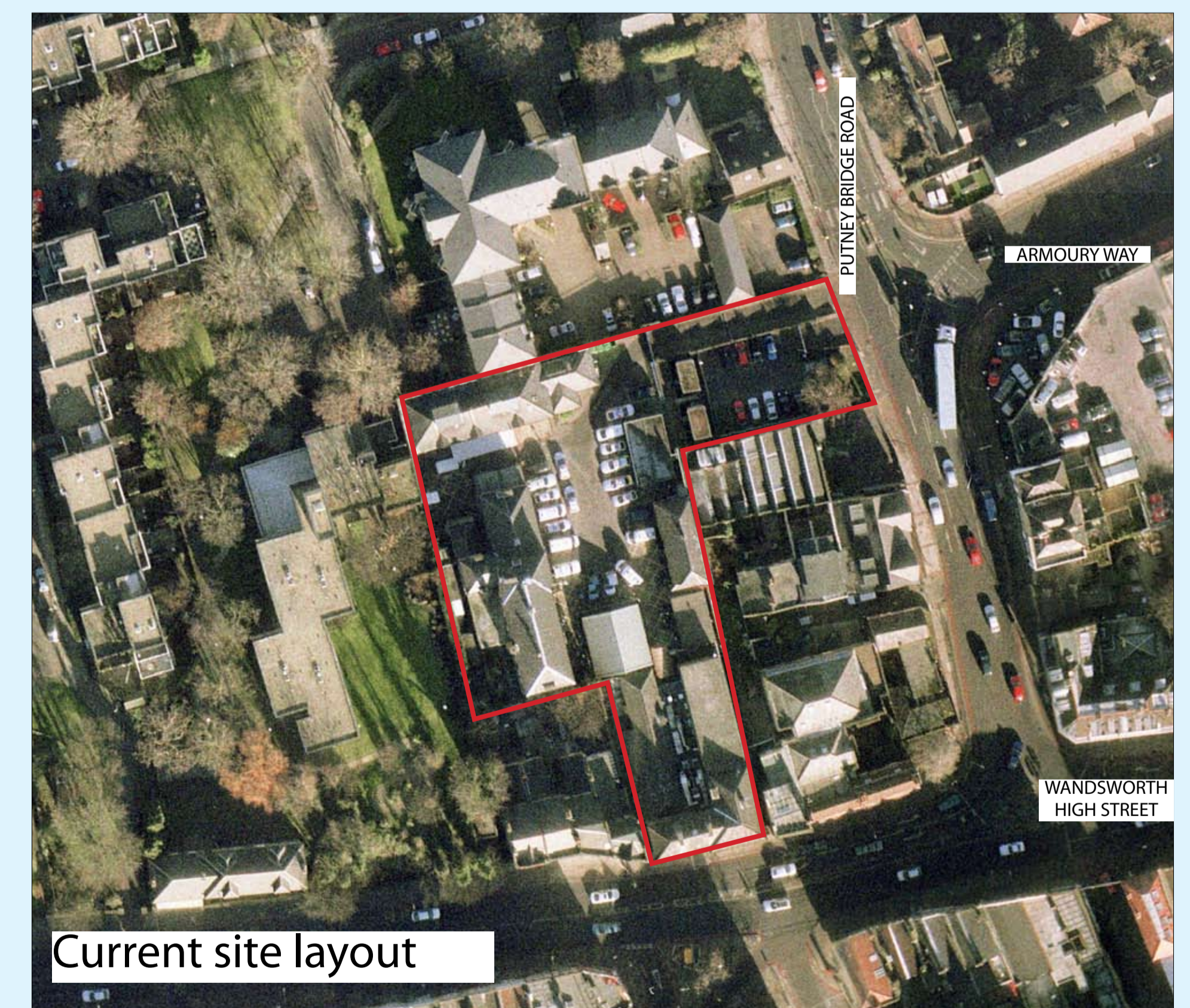
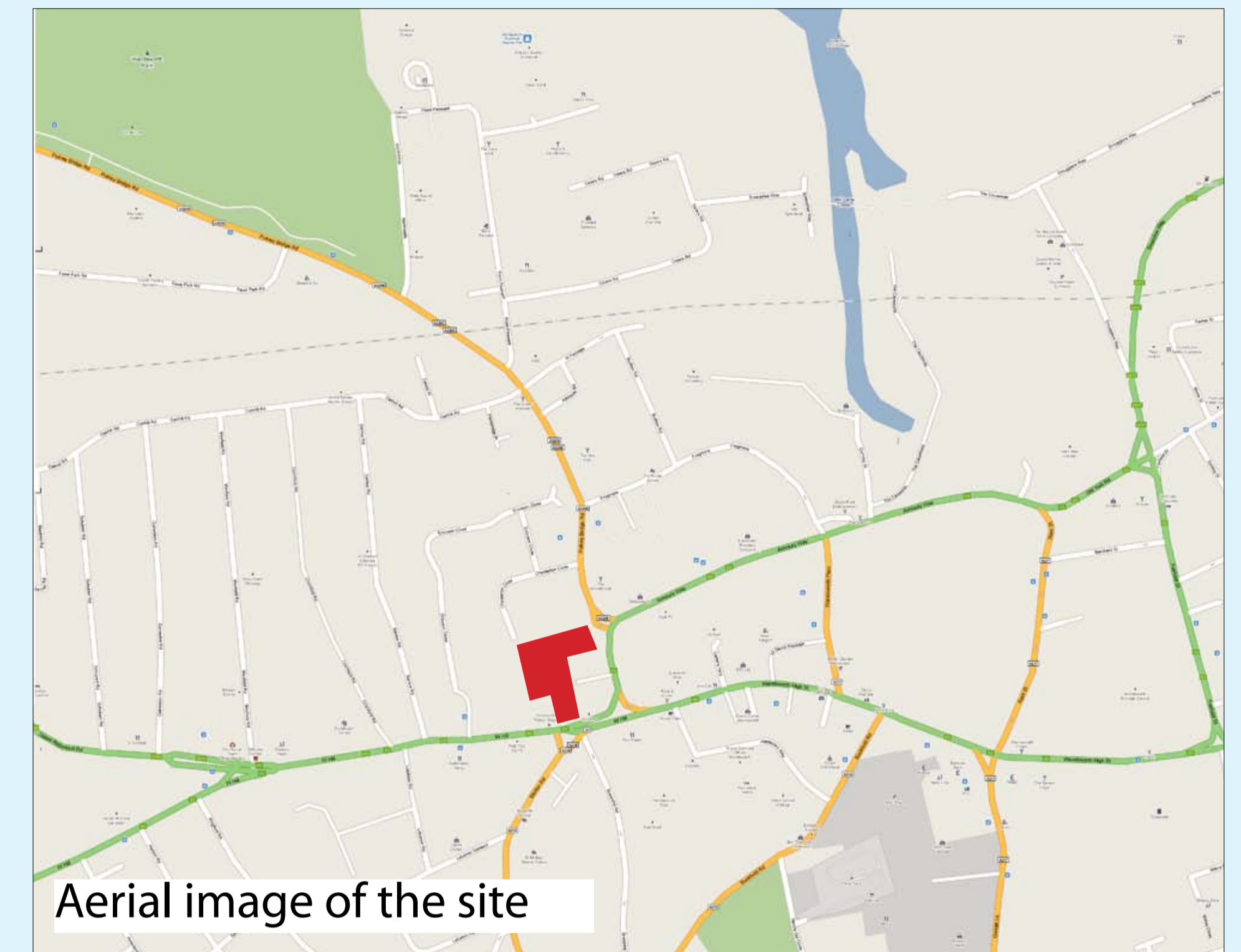
Meeting the challenge

Why we need a new Custody Centre

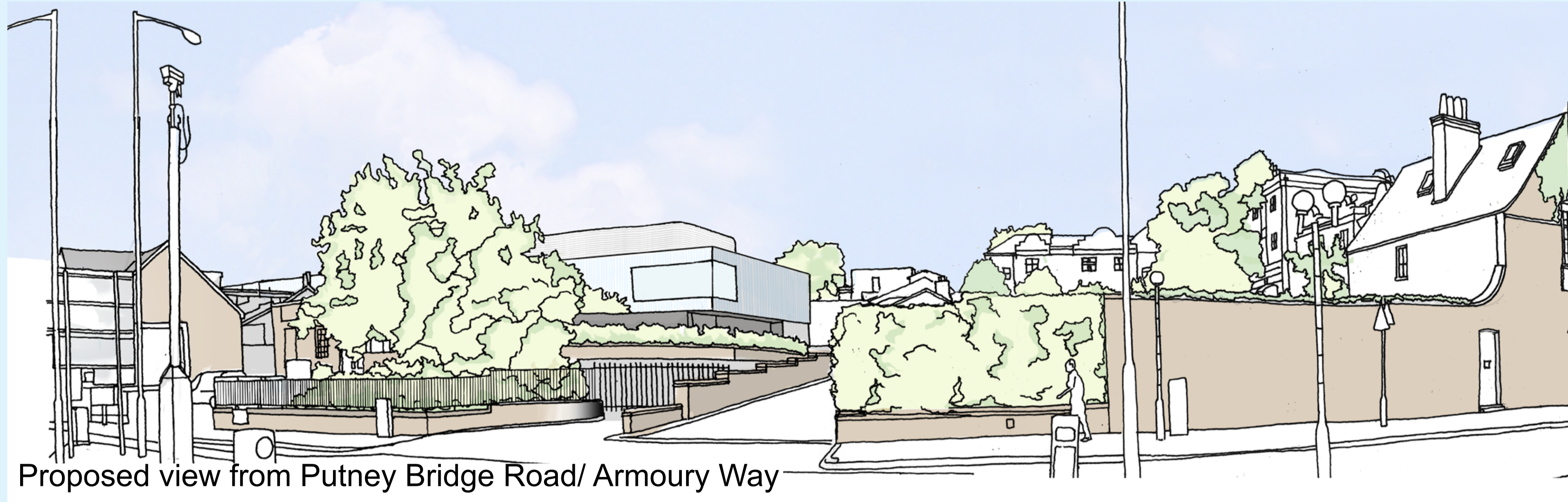
To respond to the operational challenges and to significantly improve the way we police our borough, we are proposing a single specialist custody facility in Wandsworth.

It has been recognised that it is no longer necessary or appropriate to have custody cells in high street police stations. Instead we plan to locate these cells at one strategic point in the borough to improve efficiency and free up more officers to spend more time on the streets and policing Wandsworth.

Our proposal is for a modern new police facility that is designed to the highest standard, in keeping with the local area and responds to the needs of your police service and the local communities in Wandsworth.



The proposed new Custody Centre



The right location - we propose that the new Custody Centre is located on the site of the Wandsworth Police Station, on Wandsworth High Street. This location was carefully selected because of operational advantages – it is ideally located at the centre of Wandsworth, enabling easy access from all parts of the borough and has good road links.

High quality design - the proposed building has been designed to the highest standards and in consideration of the site context and its surrounding area. The new design would improve the views into the site which currently has a mix of buildings of varying architectural styles and temporary structures.

A sensitive approach to the local area – the new facility has been designed to be in keeping with its surroundings and enhance the appearance of its vicinity. To achieve this high quality sustainable building materials would be used, which are in character and compliment the local area.

Additional custody cells– we propose that the new custody facility has 30 cells, which is nine more than we currently have in the borough. This will ensure that we can sufficiently meet current and future demand for custody provision in Wandsworth.

The proposed new Custody Centre

Preserving local character - Wandsworth Police Station has a long history in the borough and is a much valued landmark. The proposed design therefore ensures that the frontage of the current building would be preserved and further enhanced. We are also retaining the stable block which will be reused as office accommodation.

A new front counter facility – the proposed Custody Centre would not include a front counter. As part of our plans for the estate in Wandsworth we are proposing a new Safer Neighbourhood base for the Fairfield, Southfields and West Hill ward teams at Hardwicks Way. To ensure that local residents continue to have access to an efficient front counter service it is our intention to provide a 24/7 front counter facility at this new Safer Neighbourhood base, which would replace and further improve the front counter service currently provided at Wandsworth Police Station.

An environmentally sustainable building – the highly sustainable design for the Custody Centre would see it built to the highest environmental standards aiming for a 20% reduction in carbon emissions.

Consideration to local communities - the contractors we have selected to deliver this building are members of the Considerate Constructors Scheme and understand the importance of minimising the impact of building works on local communities.



Current view from Wandsworth High Street



Proposed facility with the retained building fa-

Benefits for policing

How this new facility would improve policing in Wandsworth

Having a single Custody Centre in Wandsworth would significantly improve the way we police the borough. The proposed new Custody Centre would ensure:

More effective policing – the new building would ensure that officers no longer need to spend their time travelling between different sites or off the borough to find available custody cells. This means they can spend more time on the streets, policing Wandsworth.

Improved service at front counters – it is no longer appropriate to have reception, enforcement, and victim-focused functions all taking place at the same front counter. The new Custody Centre and the new front counter at Hardwicks Way would help ensure that these functions can take place independently of each other. This would lead to increased feelings of security for those using the facility and a better service for the public.



Benefits for policing

How this new facility would improve policing in Wandsworth

Better working conditions - the new building would allow us to provide more modern and efficient working conditions for staff and officers as well as improve our working relationships with other law enforcement agencies.

Improved standards - having new cells specially designed to meet modern standards would also provide a safer environment for detainees.

A new Custody Centre will be an essential part of the Metropolitan Police estate in Wandsworth. Providing this new facility in the heart of the borough will ensure more effective policing across Wandsworth and help us keep the borough safe.

The new Safer Neighbourhood base at Hardwicks Way will offer a brand new 24/7 front counter. Located close to Wandsworth High Street it is easily accessible and will ensure that the Fairfield, Southfields and West Hill Safer Neighbourhood teams are highly visible in the local area and can patrol directly from the base.



Have your say

We hope you have found this exhibition interesting and helpful.

The designs for the proposed new Custody Centre are not yet finalised and we want your comments before we submit a planning application to Wandsworth Council.

Have your say before 18 October by:

- Completing a comments card here today
- Sending an email to wandsworth.police@met.police.uk
- Writing to

Battersea Police Station
Battersea Bridge Rd
London
SW11 3AF

All comments received will be shared with the design team and included in the 'Statement of Community Involvement' which will be submitted with the planning application.

Many thanks for visiting.

