

% of Aid Provided 2001-2002

Appendix B - Abstraction Data

<i>Borough</i>	Aug-01	Sep-01	Oct-01	Nov-01	Dec-01	Jan-02	Feb-02	Mar-02	Apr-02	May-02	Jun-02	Jul-02	% of total aid provided	% of MPS
CW	8%	7%	11%	11%	8%	6%	9%	7%	8%	9%	8%	8%	8.68%	8.15%
BS	3%	2%	2%	3%	3%	2%	2%	3%	3%	5%	2%	3%	2.69%	3.08%
EK	3%	3%	3%	4%	5%	4%	3%	4%	3%	5%	4%	4%	3.58%	3.99%
FH	3%	3%	2%	3%	4%	6%	3%	6%	3%	4%	2%	2%	3.10%	2.84%
GD	3%	4%	3%	3%	2%	4%	4%	3%	3%	2%	3%	3%	3.19%	3.77%
HT	3%	3%	2%	2%	3%	4%	3%	5%	3%	3%	3%	4%	2.85%	3.84%
JC	2%	3%	2%	3%	3%	3%	2%	4%	3%	2%	2%	3%	2.57%	2.78%
JI	3%	2%	2%	2%	2%	1%	1%	2%	2%	2%	2%	2%	2.13%	2.28%
KD	2%	2%	2%	2%	3%	2%	1%	1%	1%	2%	2%	2%	1.74%	1.93%
KF	4%	3%	3%	4%	3%	3%	4%	2%	3%	4%	3%	4%	3.44%	3.92%
KG	2%	2%	2%	1%	0%	1%	1%	1%	1%	1%	1%	2%	1.52%	1.99%
LX	5%	4%	4%	4%	4%	5%	5%	3%	4%	5%	5%	5%	4.33%	5.09%
MD	4%	4%	3%	4%	4%	5%	6%	4%	4%	4%	3%	4%	3.90%	4.46%
NI	3%	3%	2%	4%	4%	3%	4%	4%	3%	4%	3%	3%	3.13%	3.63%
PL	4%	3%	3%	3%	3%	5%	5%	3%	3%	3%	3%	4%	3.39%	3.42%
PY	3%	2%	3%	2%	1%	2%	3%	1%	2%	2%	2%	2%	2.18%	2.54%
QA	1%	2%	2%	2%	3%	1%	1%	1%	1%	1%	2%	1%	1.65%	1.76%
QK	2%	3%	2%	3%	3%	4%	4%	4%	4%	4%	4%	3%	3.13%	3.58%
RG	3%	3%	3%	3%	5%	5%	3%	3%	3%	2%	2%	3%	3.16%	3.31%
RY	3%	2%	2%	1%	1%	1%	2%	1%	1%	1%	2%	2%	1.68%	1.79%
SX	3%	4%	3%	3%	3%	2%	2%	2%	3%	3%	3%	3%	3.00%	2.90%
TW	1%	2%	1%	1%	1%	1%	1%	1%	2%	1%	1%	1%	1.34%	1.58%
TX	2%	2%	2%	3%	3%	3%	1%	3%	2%	2%	2%	2%	2.22%	2.73%
VK	1%	2%	2%	1%	1%	1%	1%	1%	1%	1%	2%	1%	1.46%	1.54%
VW	2%	2%	2%	1%	0%	0%	0%	0%	1%	1%	3%	4%	1.52%	1.79%
WW	3%	3%	3%	2%	2%	3%	3%	3%	2%	2%	3%	4%	2.67%	3.13%
XB	5%	3%	2%	3%	4%	3%	3%	4%	3%	4%	3%	2%	3.27%	3.69%
XH	2%	2%	2%	2%	2%	2%	1%	2%	2%	2%	2%	2%	2.05%	2.65%

% of Aid Provided - 2002-2003

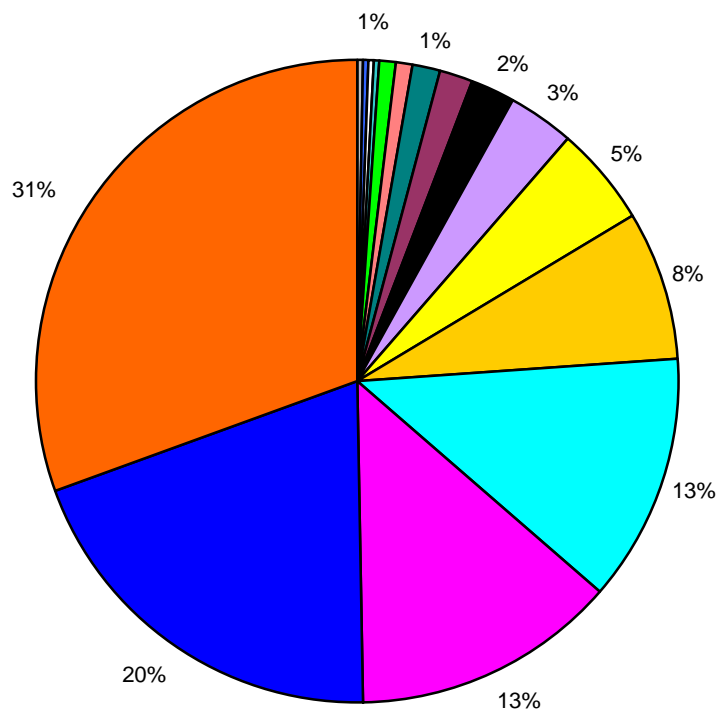
<i>Borough</i>	Aug-02	Sep-02	Oct-02	Nov-02	Dec-02	Jan-03	Feb-03	Mar-03	Apr-03	May-03	Jun-03	Jul-03	% of total aid provided	% of MPS
CW	7%	8%	10%	7%	7%	8%	8%	8%	7%	8%	7%	9%	7.69%	8.33%
BS	4%	3%	3%	2%	2%	2%	2%	2%	2%	3%	3%	3%	2.51%	2.94%
EK	4%	3%	2%	2%	3%	3%	3%	3%	3%	5%	3%	3%	3.19%	4.36%
FH	5%	4%	6%	4%	4%	3%	4%	2%	3%	2%	1%	2%	2.98%	2.77%
GD	4%	6%	2%	4%	4%	4%	2%	2%	3%	3%	5%	3%	3.49%	3.99%
HT	3%	4%	4%	3%	3%	4%	8%	4%	3%	3%	3%	4%	3.74%	4.01%
JC	2%	3%	2%	2%	2%	4%	2%	3%	3%	3%	3%	2%	2.61%	2.84%
JI	2%	1%	3%	2%	3%	3%	2%	2%	2%	2%	2%	3%	2.05%	2.31%
KD	1%	2%	2%	2%	2%	2%	1%	2%	2%	3%	2%	2%	1.86%	1.89%
KF	4%	2%	4%	3%	4%	4%	3%	5%	5%	2%	2%	3%	3.51%	4.10%
KG	1%	2%	1%	2%	2%	3%	2%	2%	2%	2%	2%	3%	2.04%	2.17%
LX	4%	6%	3%	3%	4%	4%	4%	4%	6%	5%	4%	5%	4.52%	5.08%
MD	4%	3%	3%	2%	3%	3%	4%	3%	5%	5%	4%	4%	3.71%	4.61%
NI	3%	4%	3%	5%	3%	4%	2%	3%	3%	3%	3%	3%	3.21%	3.60%
PL	5%	3%	3%	2%	3%	3%	2%	3%	3%	2%	3%	4%	2.96%	3.36%
PY	2%	2%	2%	1%	2%	2%	2%	2%	3%	2%	2%	3%	2.24%	2.40%
QA	1%	1%	1%	1%	2%	2%	2%	2%	2%	1%	2%	1%	1.50%	1.74%
QK	3%	2%	1%	2%	1%	2%	3%	2%	3%	4%	3%	3%	2.66%	3.61%
RG	3%	2%	3%	3%	3%	4%	2%	3%	4%	4%	3%	3%	3.17%	3.13%
RY	2%	2%	1%	2%	3%	1%	1%	2%	2%	1%	1%	1%	1.70%	1.84%
SX	3%	1%	1%	2%	2%	3%	2%	3%	3%	3%	3%	3%	2.49%	2.89%
TW	1%	1%	1%	2%	2%	1%	2%	2%	2%	2%	2%	1%	1.55%	1.49%
TX	2%	1%	5%	2%	3%	2%	3%	3%	3%	2%	2%	2%	2.56%	2.62%
VK	1%	1%	2%	1%	2%	1%	1%	2%	1%	2%	1%	1%	1.40%	1.43%
VW	1%	1%	1%	2%	2%	2%	1%	2%	2%	1%	2%	2%	1.62%	1.77%
WW	3%	3%	3%	4%	3%	2%	3%	3%	3%	3%	3%	2%	2.77%	3.06%
XB	3%	3%	3%	4%	4%	3%	5%	3%	3%	3%	4%	3%	3.23%	3.59%
XH	2%	3%	2%	2%	2%	2%	3%	3%	3%	2%	2%	1%	2.30%	2.51%

YE	3%	2%	3%	4%	3%	3%	2%	2%	3%	2%	2%	4%	2.65%	2.93%
YR	3%	3%	3%	7%	4%	3%	2%	2%	3%	3%	5%	4%	3.44%	3.63%
ZD	4%	4%	4%	3%	4%	2%	2%	3%	4%	3%	3%	2%	3.20%	3.51%
ZT	1%	1%	1%	1%	1%	1%	1%	2%	2%	2%	1%	1%	1.48%	1.48%
1 TSG	1%	2%	1%	3%	2%	1%	2%	2%	1%	2%	2%	2%	1.87%	N/A
2 TSG	1%	2%	2%	2%	1%	1%	2%	1%	1%	1%	1%	2%	1.35%	N/A
3 TSG	1%	2%	2%	3%	1%	2%	2%	2%	1%	2%	2%	2%	1.69%	N/A
4 TSG	1%	2%	1%	1%	1%	1%	2%	1%	1%	1%	1%	1%	1.08%	N/A
5 TSG	1%	2%	2%	3%	1%	1%	1%	1%	1%	1%	1%	1%	1.34%	N/A
Non BOCU	2%	2%	3%	4%	2%	2%	2%	3%	2%	3%	4%	1%	2.63%	N/A
Totals	100%	100%	100%	100%	100%	100%	100%	100%	100%	100%	100%	100%	100%	100%

FURTHER DATA TO BE PROVIDED:

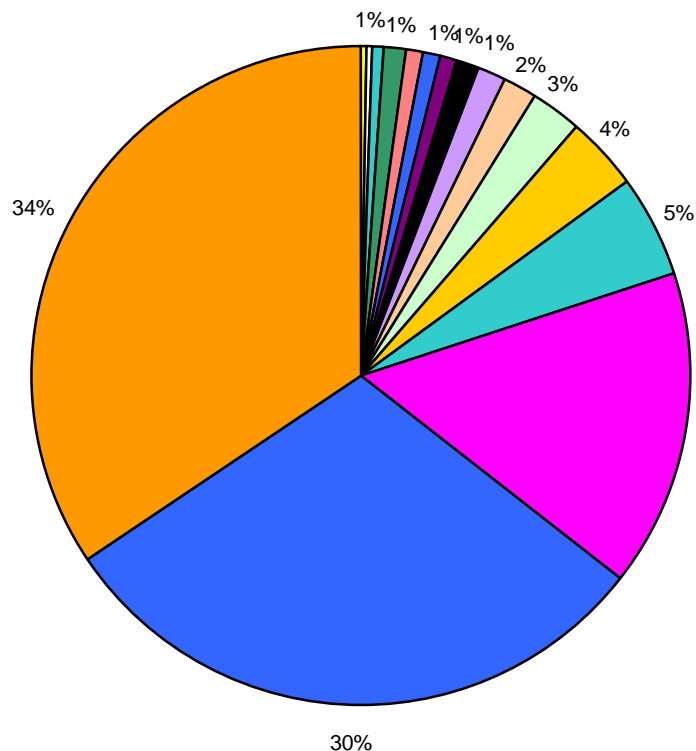
- **ABSTRACTIONS AS PERCENTAGE OF RAF (by Borough)**
- **ABSTRACTIONS PER OFFICER (by Borough - Rolling 12 month Programme)**

PCs by event type - August 2001 to July 2002



- No type code (378)
- Fireworks Display (399)
- House to House (532)
- Comissioners Football Reserve (696)
- Borough Initiative (1281)
- Remebrance Ceremony (1455)
- Royal visits (2561)
- Religious (2693)
- Sporting Events (3944)
- Social/Community (5487)
- POLSA Search (8868)
- Ceremonial (12940)

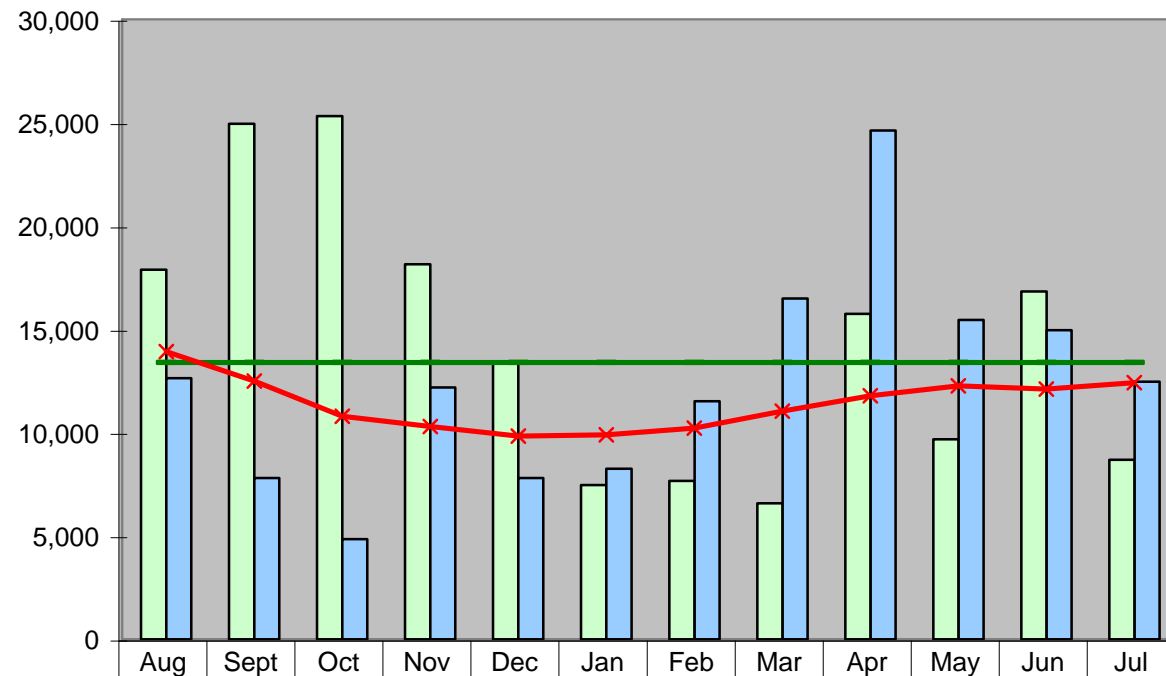
PCs by event type - August 2002 to July 2003



- St. George Day (11)
- Commissioners Football Reserve (337)
- Fireworks Display (485)
- House to house (1020)
- Borough Initiative (1260)
- Religious (1300)
- Remebrance Ceremony (1378)
- Jury Protection (1406)
- Royal Visit (1449)
- No type code (2159)
- Social / Community (2309)
- Sporting Events (3985)
- Ceremonial (5255)

**APPENDIX B
Abstraction Data**

**Number of constables
on events by month**



	Aug	Sept	Oct	Nov	Dec	Jan	Feb	Mar	Apr	May	Jun	Jul
2001/2002	17,888	24,948	25,329	18,150	13,414	7,471	7,673	6,580	15,744	9,685	16,830	8,695
2002/2003	12,635	7,812	4,848	12,185	7,813	8,256	11,529	16,501	24,618	15,464	14,959	12,467
Average Aid Provided	13396	13396	13396	13396	13396	13396	13396	13396	13396	13396	13396	13396
Trend (12 month moving average)	13,930	12,502	10,795	10,298	9,831	9,896	10,218	11,044	11,784	12,266	12,110	12,424

Draft for consideration
Data is not accurate