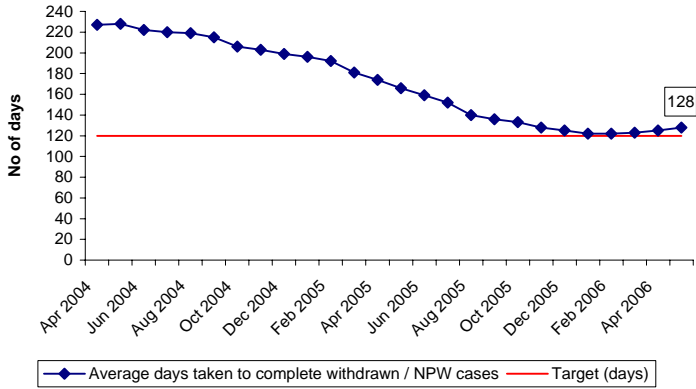
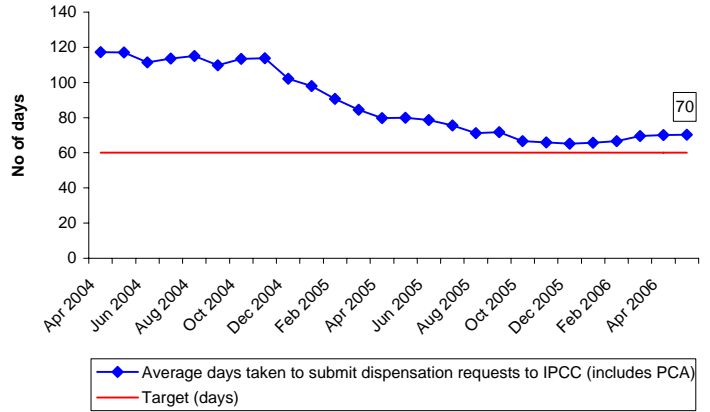


Public Complaints: Average Days to Investigate (Full Investigation)



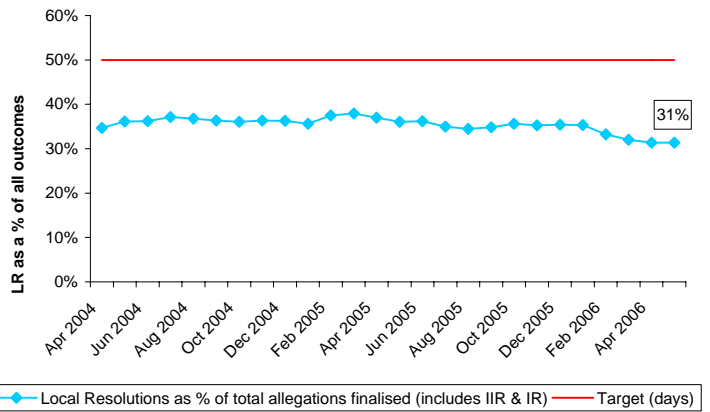
Public Complaints: Dispensations/Discontinuances



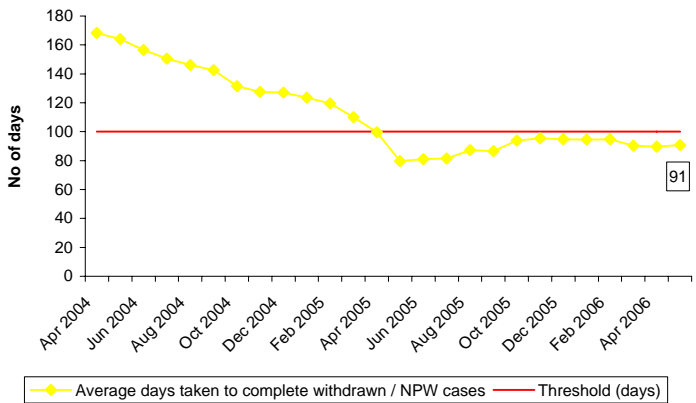
Public Complaints: Local Resolutions - Timeliness



Public Complaints: Local Resolutions - Percentages



Misconduct Hearing: Average Days from decision to misconduct hearing or final disposal



Conduct Matters: Average Days to Investigate (Full Investigation)

