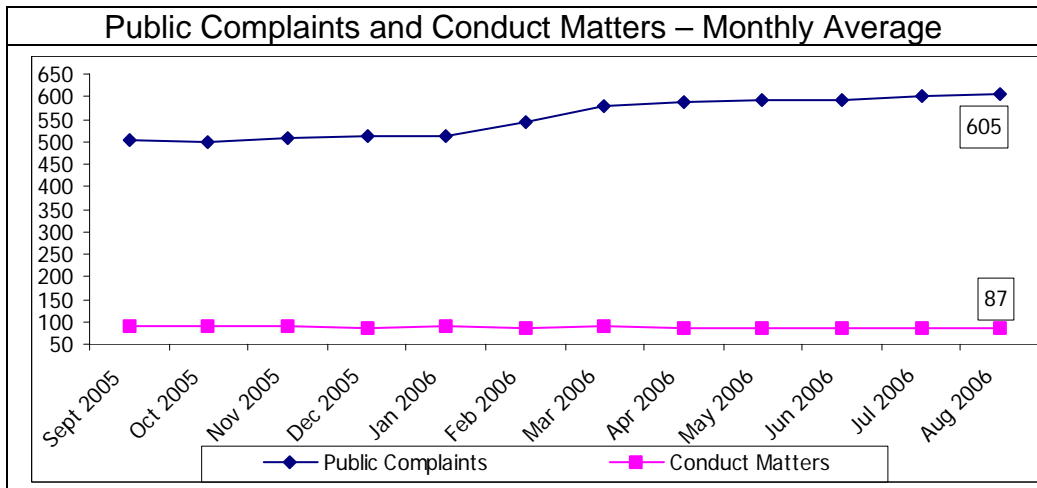
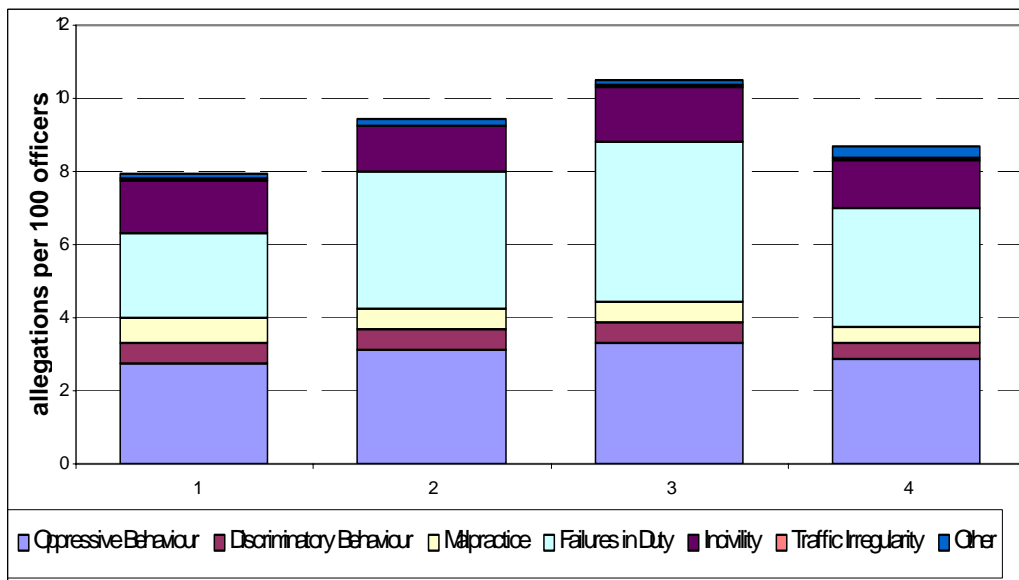


**Table 1 - Allegations Recorded**



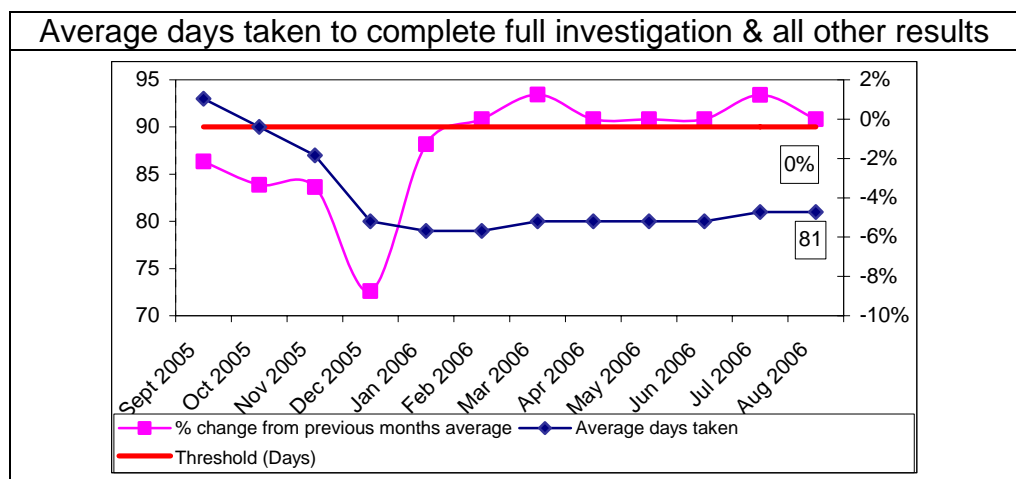
**Table 2 – Public complaints**



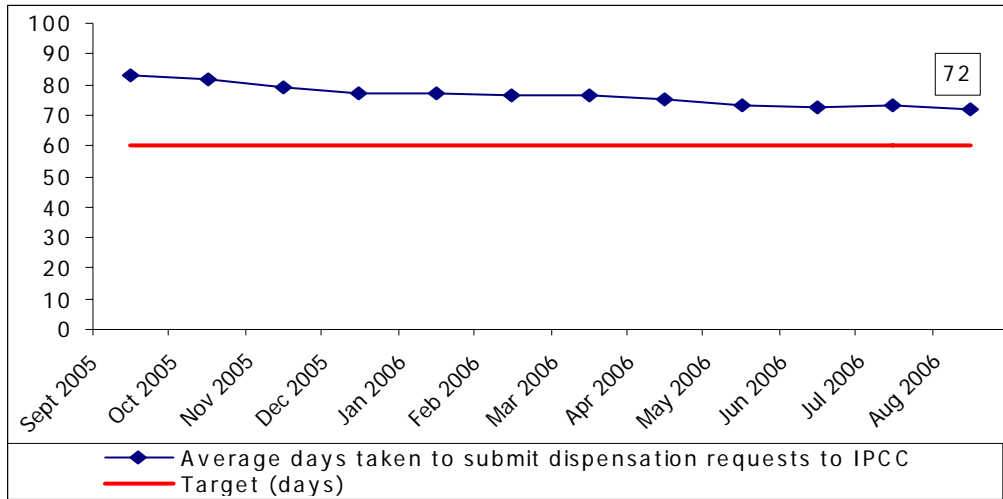
**Table 3 – Allegations by type**

	Period				Period Averages	MPS Total
	1	2	3	4		
	Nov-05 to Sep-05	Feb-06 to Dec-05	May-06 to Mar-06	Aug-06 to Jun-06		
Oppressive Behaviour	2.75	<b>3.12</b>	<b>3.30</b>	2.86	<b>2.99</b>	<b>12.03</b>
Discriminatory Behaviour	<b>0.57</b>	<b>0.58</b>	0.55	0.43	<b>0.56</b>	<b>2.13</b>
Malpractice	<b>0.65</b>	0.54	<b>0.57</b>	0.45	<b>0.55</b>	<b>2.20</b>
Failures in Duty	2.35	<b>3.74</b>	<b>4.40</b>	3.24	<b>3.49</b>	<b>13.72</b>
Incivility	<b>1.42</b>	1.27	<b>1.51</b>	1.35	<b>1.39</b>	<b>5.56</b>
Traffic Irregularity	<b>0.06</b>	0.03	0.04	<b>0.06</b>	<b>0.05</b>	<b>0.19</b>
Other	0.16	<b>0.17</b>	0.15	<b>0.27</b>	<b>0.17</b>	<b>0.75</b>
<b>Total</b>	<b>7.97</b>	<b>9.44</b>	<b>10.51</b>	<b>8.66</b>	<b>9.05</b>	<b>36.58</b>

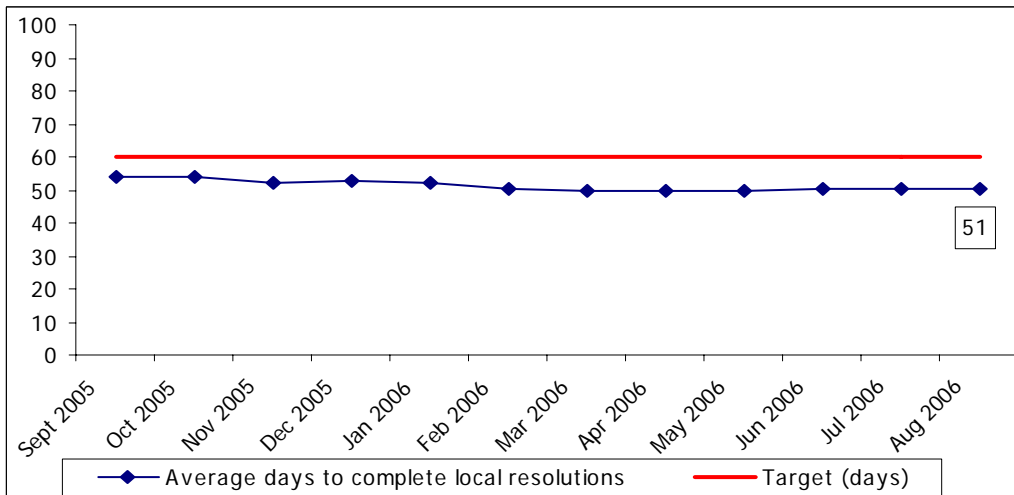
**Table 4a - Timeliness - Public Complaints**



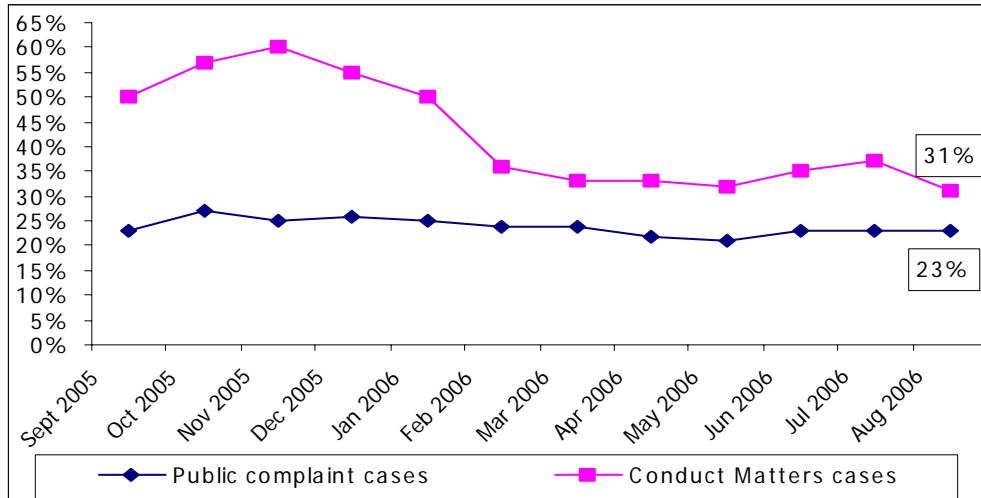
**Table 4b - Average days taken to submit dispensation/discontinuance requests to the IPCC**



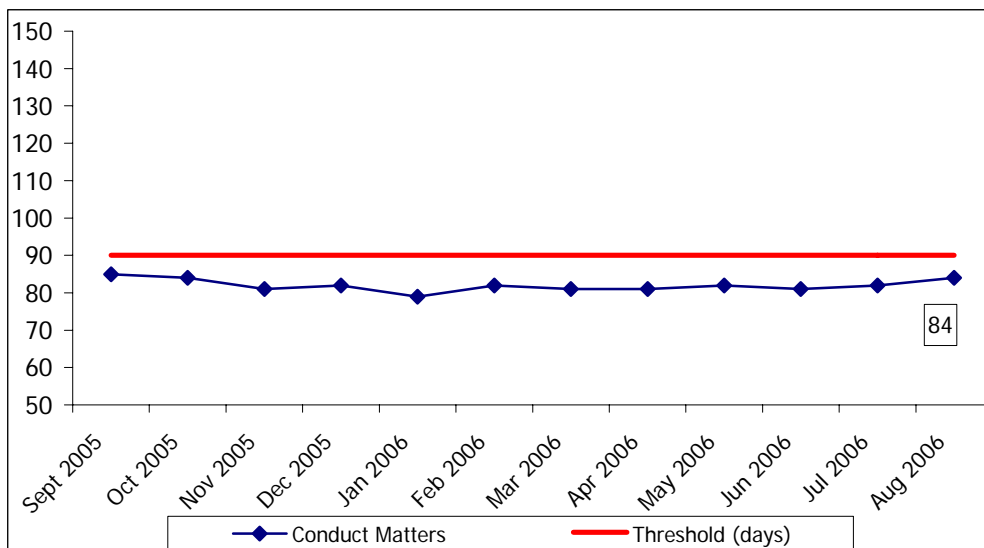
**Table 5 - Average Days taken to achieve a Local Resolution**



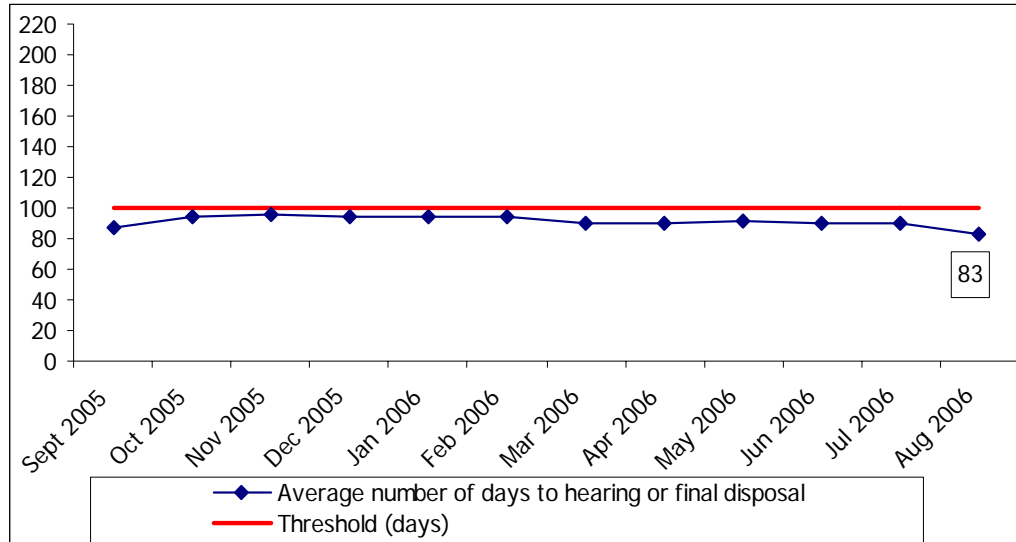
**Table 6 - Percentage of cases over 120-days\* old – Public Complaints / Conduct Matters**



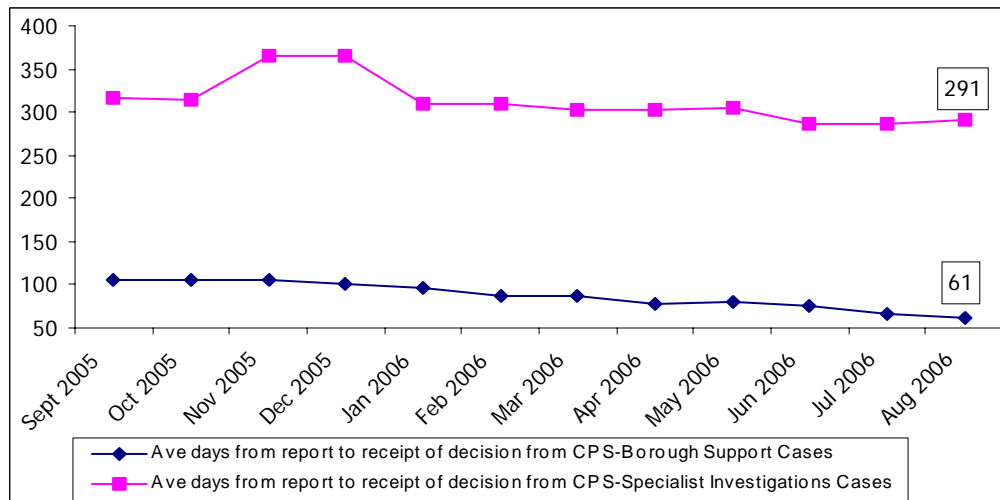
**Table 7 - Average days taken to complete an investigation**



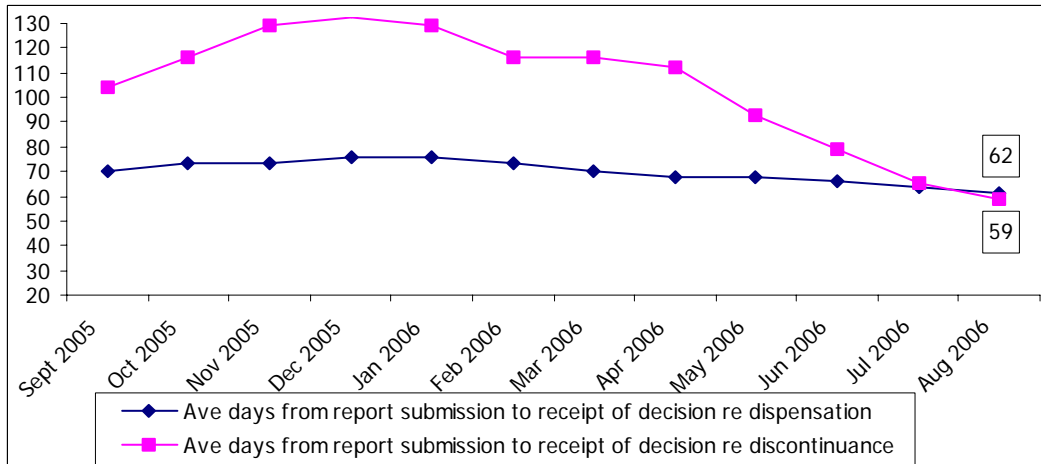
**Table 8 - Misconduct – Average number of days from decision to hearing or final disposal**



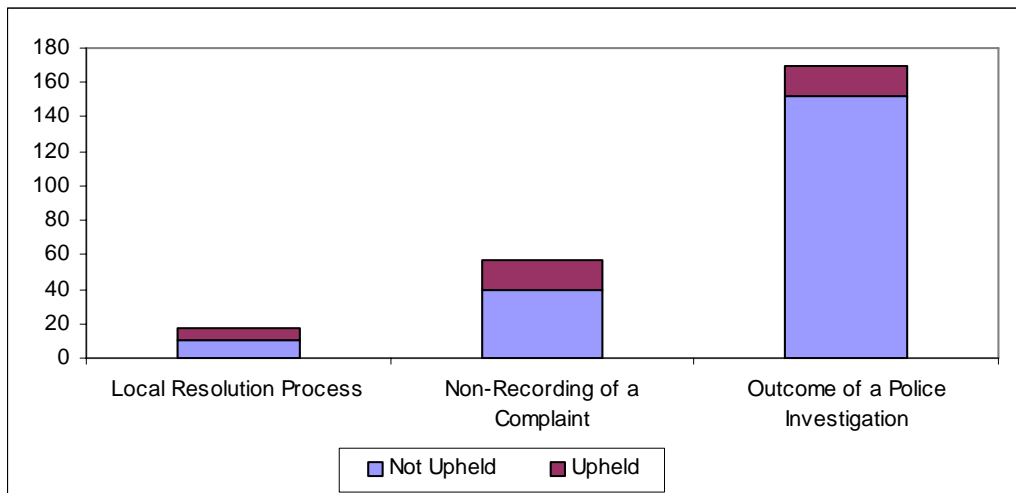
**Table 9 - Average number of days from report to receipt of decision from CPS**



**Table 10 - Average number of days from report submission to receipt of decision from IPCC**



**Table 11 - Number of appeals made to the IPCC by type and outcome**



**Table 12 - Public Complaints Finalised allegation by result**

