

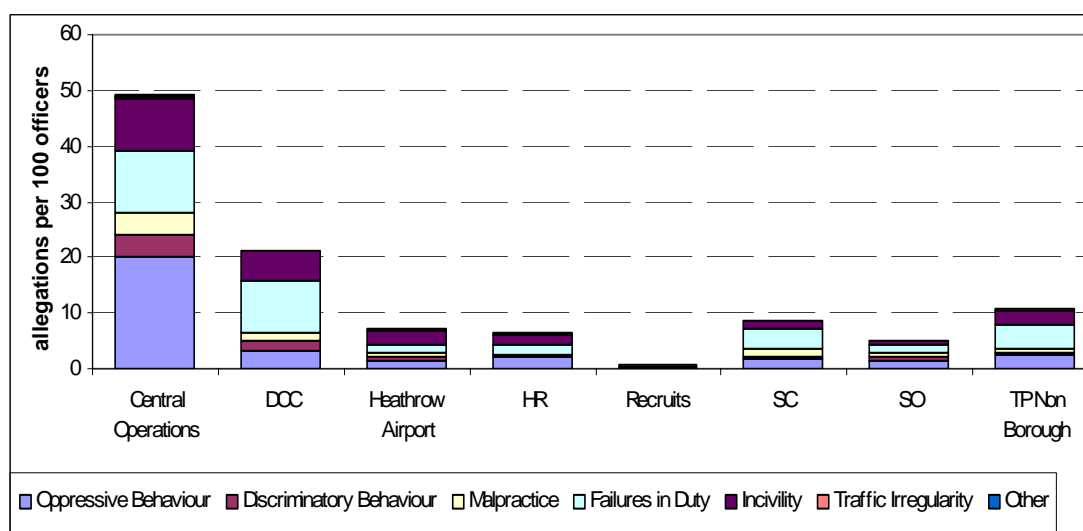
## GROUP 6

### Public Complaints allegations per 100 officers by type – December 2006 to November 2007

This is the second time that Family Group 6 has appeared before the MPA. The last time was in December 2005, when the period reviewed was November 2005 to October 2006. However, this is the first time that the whole group has been subject to the *Professional Standards Support Program (PSSP)*.

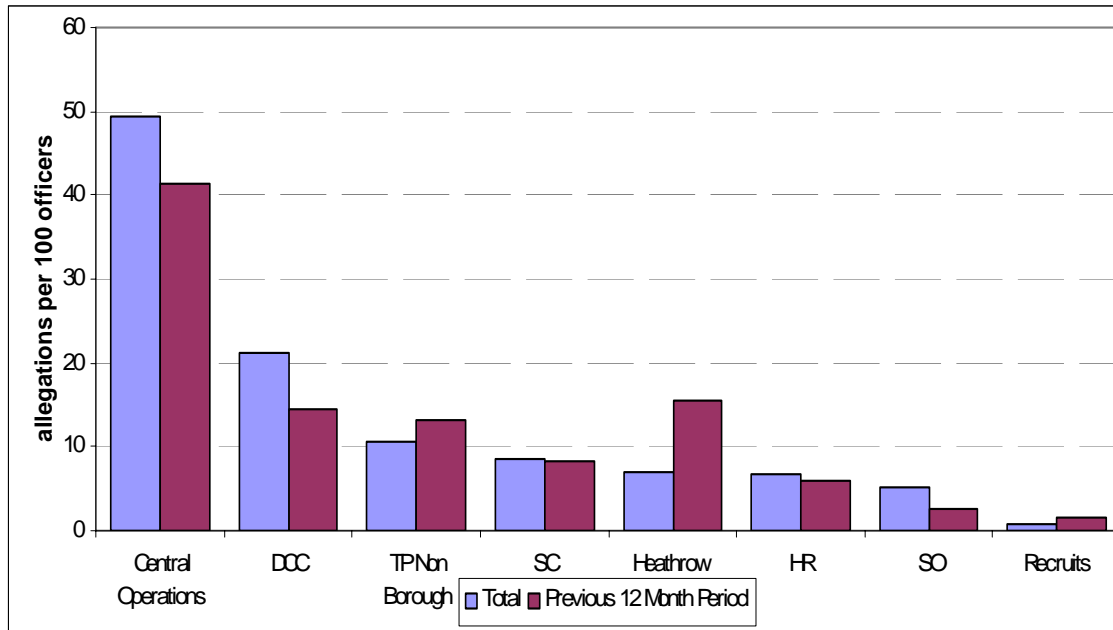
The units appearing within this group are all Operational Command Units and because they cover dissimilar work they cannot be compared directly with each other. For the purposes of this report, comparisons have been made with the MPS total and in the following table, each unit against itself.

The table below looks at the number of allegations received per 100 officers for the current 12-month total compared to the previous 12-month period.



The majority of complaints received are within Central Operations (CO) and this has risen from 41 allegations to 49 allegations, which is slightly greater an increase that the MPS rise from 41 to 46. CO includes *Territorial Support Group (TSG)*, *Transport (TOCU)* and *Traffic*.

The following table illustrates those allegations (per 100 officers) received in the last 12-months by the allegation type.



In line with wider MPS public complaint distribution, the majority of allegations are concentrated in the areas of *Oppressive Behaviour*, *Failure in Duty* and *Incivility*.

This table below illustrates the numbers of allegations, per 100 officers, by type and whether a Unit is above the group average in which case the figures will be in both **blue** and **bold** text. The MPS averages are also illustrated for comparison.

	Group 6								MPS Total
	Central Operations	DCC	Heathrow Airport	HR	Recruits	SC	SO	TP Non Borough	
Oppressive Behaviour	<b>20.14</b>	3.31	1.46	2.20	0.23	1.80	1.60	2.43	<b>15.37</b>
Discriminatory Behaviour	<b>3.76</b>	1.54	0.62	0.24		0.47	0.44	0.32	<b>3.20</b>
Malpractice	<b>4.24</b>	1.76	0.83	0.24		1.26	0.66	0.97	<b>3.54</b>
Failures in Duty	11.11	19.04	1.46	1.47	0.47	3.76	1.55	4.06	<b>15.17</b>
Incivility	<b>9.40</b>	5.51	2.50	1.95		1.20	0.77	2.76	<b>8.24</b>
Traffic Irregularity	<b>0.29</b>						0.11	0.16	<b>0.23</b>
Other	0.41		0.21	0.49		0.03	0.06		<b>0.63</b>
<b>Total</b>	<b>49.36</b>	<b>21.17</b>	<b>7.07</b>	<b>6.60</b>	<b>0.70</b>	<b>8.52</b>	<b>5.19</b>	<b>10.71</b>	<b>46.37</b>

Within Group 6, CO has an average number of allegations per 100 officers that is higher than that of MPS as a whole. CO has all but one of the allegation types over the MPS average but the majority of these are of an *Oppressive Behaviour* nature (41% of all allegations compared with the MPS average of 33%).

The following table illustrates specific factors, per 100 officers, evident within the allegations recorded in the table above.

Group 6									MPS Total
	Central Operations	DCC	Heathrow Airport	HR	Recruits	SC	SO	TP Non Borough	
Officer Safety Equipment	4.42	1.32	0.21			0.13	0.55		3.22
Stop & Search (inc s44)	11.09	0.22	0.42	0.49		0.17	0.39	0.97	4.67

Central Operations also have a greater than MPS average in respect of Officer Safety Equipment and Stop & Search related allegations. The latter is over twice the MPS average.

The following table illustrates the monthly average trends, per 100 officers, for each group over the current month, 3 months, 6 months and 12 months.

Group 6									MPS Total
	Central Operations	DCC	Heathrow Airport	HR	Recruits	SC	SO	TP Non Borough	
Current month (actual)	2.19	1.54	0.42	0.73		0.70	0.39	0.16	3.35
Average over the past 3 months	2.05	1.47	0.28	0.33	0.08	0.79	0.55	0.70	3.31
Average over the past 6 months	3.12	1.69	0.21	0.29	0.08	0.71	0.49	0.89	3.70
Average over the past 12 months	4.11	1.76	0.59	0.55	0.06	0.71	0.43	0.89	3.86

### Outcomes (Allegations):

The table below illustrates how allegations, per 100 officers, have been resulted in the period, December 2006 to November 2007.

	Family Group 6									MPS Total
	Central Operations	DCC	Heathrow Airport	HR	Recruits	SC	SO	TP Non Borough		
Not Recorded	0.70	0.44	1.04	0.49	0.23	0.77		0.32		2.91
Local Resolution	13.68	7.06	3.95	1.47	0.23	2.40	1.60	3.25		13.04
Dispensation	6.69	1.98	0.42	0.49		1.07	0.39	0.65		5.17
Discontinuance	0.19	0.44	0.21							0.43
Withdrawn	6.38	1.76	2.08	1.22	1.40	2.66	0.50	1.95		7.43
Substantiated	0.25	0.44	1.25			0.03		0.16		0.46
Unsubstantiated	16.55	9.26	1.46	3.91		3.73	2.54	4.38		15.52
<b>Grand Total</b>	<b>44.44</b>	<b>21.39</b>	<b>10.40</b>	<b>7.57</b>	<b>1.86</b>	<b>10.65</b>	<b>5.02</b>	<b>10.71</b>		<b>44.96</b>

Overall CO 'locally resolve' a slightly higher number of allegations per 100 officers than the MPS as a whole. Equally, they have a greater number of those that are 'dispensed with' and 'unsubstantiated'.

Heathrow have just under three times the substantiation rate per 100 officers than the MPS total but the actual numbers are very small and not necessarily significant.

Not Recorded allegations are those that are not deemed to be complaints under the Police Reform Act 2002, as they do not directly relate to the 'conduct' of an individual or group of officers. Although they are not recorded as complaints they will nevertheless be recorded and dealt with to the satisfaction of the complainant by intervention between DPS and the Borough itself.

Dispensations are usually granted where the complainant cannot be traced or does not wish to cooperate with the investigation. The Commission is granting fewer Dispensations with their preference being for DPS to conduct proportionate investigations.