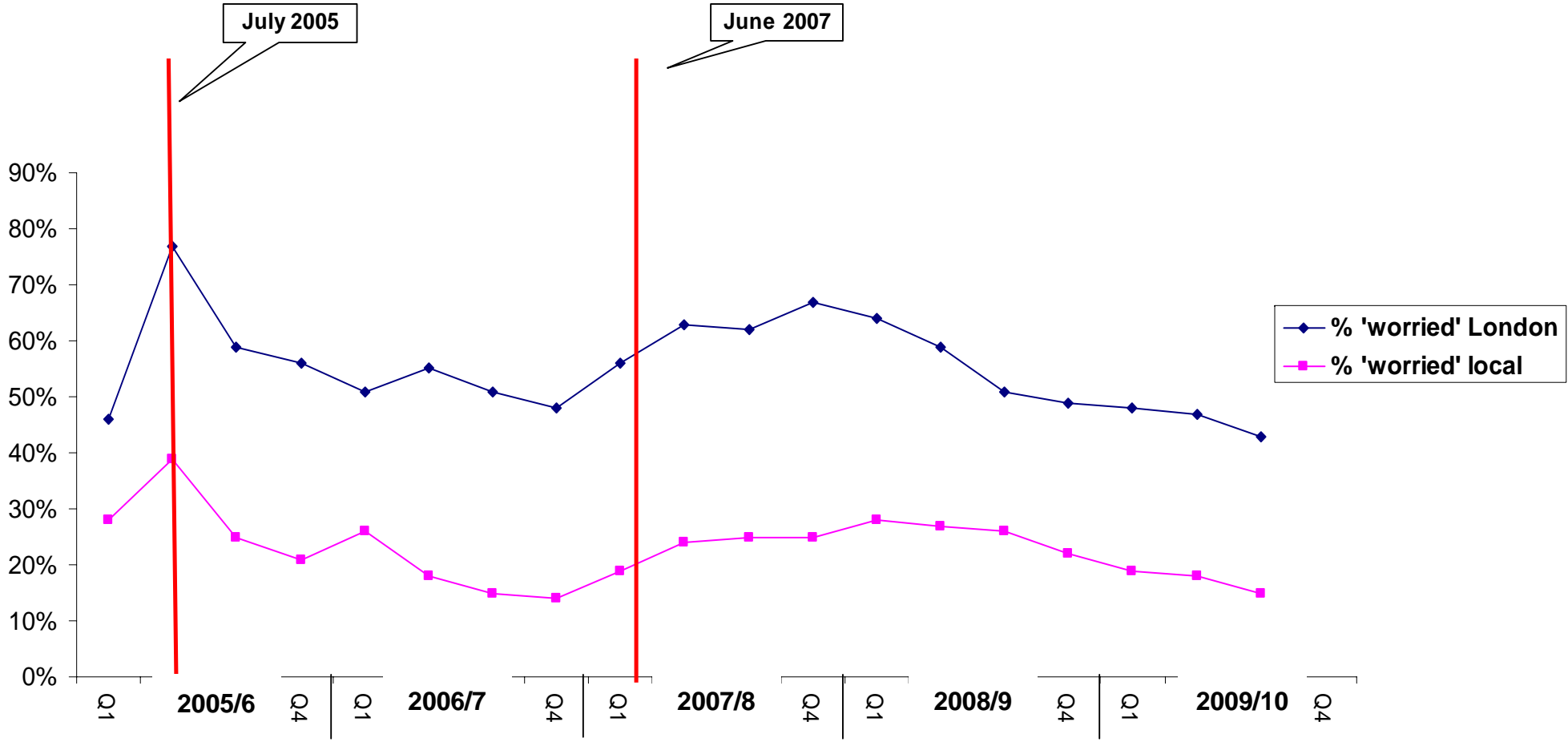


Extent to which respondents to the MPS PAS are 'worried' about terrorist incidents in London and their own local area



% number of community members surveyed expressing satisfaction with police
Target Establish Baseline

Q79 Here is a list of services that the police provide. For each one, I would like you to tell me firstly how well you think the Metropolitan Police actually carry out each of them. Please use a scale of 1 to 7, where 1 is 'not at all well' and 7 is 'very well'.

Achievement	2006/7 Q1	2006/7 Q2	2006/7 Q3	2006/7 Q4	2007/8 Q1	2007/8 Q2	2007/8 Q3	2007/8 Q4	2008/9 Q1	2008/9 Q2	2008/9 Q3	2008/9 Q4	2009/10 Q1	2009/10 Q2	2009/10 Q3
	April-June	July-Sept	Oct-Dec	Jan-March	April-June	July-Sept	Oct-Dec	Jan-March	April-June	July-Sept	Oct-Dec	Jan-March	April-June	July-Sept	Oct-Dec
Preventing Terrorism Rating	5.71	5.79	5.68	5.89	5.63	5.44	5.65	5.67	5.6	5.6	5.55	5.75	5.79	5.51	5.47
Policing Major events rating	5.96	5.87	5.95	6.02	5.76	5.59	5.77	5.71	5.65	5.54	5.51	5.73	5.77	5.5	5.47
Solving Murder													5.51	5.37	5.22
Treating People with respect Rating	5.48	5.33	5.48	5.7	5.56	5.26	5.48	5.42	5.33	5.39	5.39	5.38	5.45	5.29	5.27
Responding to emergencies promptly Rating	5.33	5.24	5.42	5.51	5.34	5.18	5.33	5.3	5.2	5.12	5.1	5.24	5.32	5.23	5.17

Q80 Secondly, I'd like you to tell me how important it is to you that the Metropolitan Police do each of these. Again, please use a scale of 1 to 7, where 1 is 'not at all important' and 7 is 'very important'.

Importance	2006/7 Q1	2006/7 Q2	2006/7 Q3	2006/7 Q4	2007/8 Q1	2007/8 Q2	2007/8 Q3	2007/8 Q4	2008/9 Q1	2008/9 Q2	2008/9 Q3	2008/9 Q4	2009/10 Q1	2009/10 Q2	2009/10 Q3
	April-June	July-Sept	Oct-Dec	Jan-March	April-June	July-Sept	Oct-Dec	Jan-March	April-June	July-Sept	Oct-Dec	Jan-March	April-June	July-Sept	Oct-Dec
Preventing Terrorism Rating	6.62	6.82	6.68	6.74	6.6	6.63	6.66	6.72	6.46	6.54	6.49	6.77	6.79	6.77	6.83
Policing Major events rating	6.31	6.6	6.54	6.63	6.55	6.54	6.53	6.56	6.3	6.44	6.41	6.62	6.63	6.61	6.65
Solving Murder													6.83	6.8	6.85
Treating People with respect Rating	6.62	6.76	6.71	6.75	6.65	6.65	6.65	6.7	6.47	6.5	6.47	6.73	6.74	6.72	6.77
Responding to emergencies promptly Rating	6.73	6.85	6.78	6.82	6.68	6.73	6.72	6.73	6.51	6.56	6.5	6.8	6.78	6.73	6.8

