



PERFORMANCE REVIEW COMMITTEE - SUMMARY SHEET

Paper title: December Performance Report

Ref. No. PRC(01)8

Date of meeting: 24 January 2001

Date paper received by CDG: 19 January 2001

Date circulated: 19 January 2001

Sponsor: Deputy Commissioner

Prepared by: Lesley Nichols, Corporate Development Group

Submitted for: Decision / Information

Decisions:

Decisions to be actioned by:

Previously considered by:

Date:

MPS Performance Report – December 2000

Contents:

Page 1 December Scorecard

Page 2 Performance Headlines

Page 7 Metstats Charts

Page 15 Borough Profile (not included with MPA papers)

Page 16 Best Value and Policing Plan Indicators

BALANCED SCORECARD, DECEMBER 2000

		Standard or Target for 2000/2001	Actual Performance
Vision: Is London safe?			
	1 Total Crime per 1000 population	136 crimes per 1000 population	138.5 crimes per 1000 pop
	2 Violent crime		28.1 offences per 1000 pop
	3 Level of Disorder		58.6 incidents per 1000 pop
	4 Fear of crime & feelings of public safety % which feel threatened has increased from PAS 1999		44% feel threatened (PAS 2000)

Performance Results			
	1 Homicide	89% clear-up rate	80.6% (69.2% in December)
	2 Burglary	2% reduction, 10% judicial disposals	6.0% decrease, 10.0% JDs
	3 Street Crime	Zero growth, 9% judicial disposals	25.3% increase, 8.0% JDs
	4 Autocrime	8% reduction, 8% judicial disposals	1.3% increase, 4.4% JDs
	5 Young Offenders	PYO arrest to charge 2 days, to court listing 7 days (70%), and youth case disposal 28 days(80%)	53.9% in 2 days, 62.2% in 7 days and 81.5% in 28 days
	6 Race/Hate Crime	15% judicial disposal rate	15.7% JDs
	7 Stop & Search	Multiple indicator, no standard set	15.7(white) 45.7(non-white)per 1000 pop (year to November)
⊗	8 CRR Training	Provide training for 40% of identified staff by 31 March 2001	25.4% of identified staff
	9 Emergency Calls	Answer 999 calls within 15 secs & Arrive within 12 mins 80% of the time	999 calls 80.6% & I Calls 77.5%
	10 Road Casualties	4% reduction against a baseline of 0.8 KSI collisions per 1000 pop	8.4% reduction (April to October only)
⊗	11 Drug-related Crime	10% increase for supply & pwi of class A, refer 2,000 offenders into treat	16.0% JD increase, 868 offenders referred (April to September)

Resources			
	1 Current Expenditure: Outturn -v- Budget		0.0% below budget (April to December)
	2 Capital Expenditure: Outturn -v- Budget		Financial Year to December 51.95% spent
	3 Efficiency Targets on course	HMIC approved efficiency plan for 99/00	2nd Quarter financial target achieved
	5 Expenditure per head of population	Published annually - no target set	£219 per head (98/99)

Corporate Health: Values			
	2 Recruitment & Retention	% turnover has increased from 99/00 data	5.7% turnover (Police), 14.7% (Civil and TW)
	3 Representative Police Service	5% Ethnic Minority Officers	3.97% (12 month average)
	4 Sickness	9 days p.a. (Police), 10 days (Civil Staff)	10.0 days (Police), 11.7 days (Civil)(Year to September)
⊗	6 Accessibility	68% of MPS buildings accessible to disabled people	45% accessible

Corporate Health: Customer Focus			
	1 Customer Satisfaction	Multiple measures (April to December data)	standard achieved in 1 out of 5 categories
	2 High quality professional service		231.7 complaints per 1000 officers

Current information based on a 12 month total for the period ending Dec 2000

Information from previous period based on a 12 month total for the period ending Nov 2000

Key	
	Performing above upper control limit
	Performing above standard/target and below upper control limit
	Performing below standard/target but above lower control limit
	Performing below lower control limit
	Data available but target/standard not set
	Indicator based on partial information
	Change in performance due to agreed alteration in indicator

Performance Headlines – December 2000

The Performance Report for December includes an MPS scorecard, a borough profile, and a full listing of Best Value and Policing Plan PIs as requested by the MPA.

The performance highlights are described below.

Key Crime Targets	Achievement		Target likely to be met?	Better or worse than last month?
	Planning year to date Apr-Dec 2000 (compared with Apr – Dec 99 where applicable)	Rolling year Jan-00 to Dec-00 (compared with Jan 99 – Dec 99 where applicable)		
To achieve a homicide clear up rate of 89%	79.3%	80.6%	✘	☹
To achieve zero growth in street crime	+20.1%	+25.3%	✘	☹
To achieve a street crime JD rate of 9%	8.3%	8.0%	⚡	☹
To achieve a 2% reduction in burglary	- 9.9%	-6.0%	✓	😊
To achieve a burglary JD rate of 10%	10.3%	10.0%	✓	☹
To achieve an 8% reduction in autocrime	+ 0.6%	+1.3%	✘	☹
To achieve an autocrime JD rate of 8%	4.4%	4.4%	✘	☹
To increase the number of JDs for supply and PWI by 10% (compared with the level during 1998/9)				
All drugs	-13.5%	-8.6%	✘	☹
Class A drugs	+15.3%	+16.0%	✓	☹
Cocaine	-5.1%	-2.3%		😊
Crack	+18.8%	+13.2%		☹
Heroin	+31.0%	+27.7%		😊
To refer 2000 drugs offenders into treatment from arrest referral schemes (April-September)	868		⚡	☹

Key:

⚡	Uncertain whether target will be met at year end
✓	Target likely to be met a year end
✘	Target unlikely to be met at year end
	Performance exceeding target
	Performance not meeting target
😊	Performance higher than last month
☹	Performance lower than last month
☹	No change in performance since last month

1. HOMICIDE

- 1.1 There have been 145 homicides in the period April-December 2000 (compared with 146 in the same period in 1999). Of these, 115 (79.3%) have been cleared up against a target level of 129 (89%). This compares with a clear-up rate of 74.0% in the same period in 1999.

2. STREET CRIME

Street crime offences

- 2.1 There were 4050 street crime offences in December 2000, compared with 3322 offences in December 1999, and the monthly average of 3575 in 99/00. The daily rate of street crime offences was slightly lower in December 2000 (131 per day) than in October/November 2000 (137 per day).
- 2.2 The year-to-date percentage increase (20.1%) reflects a lessening of the rate of increase shown over the rolling year (25.3%).
- 2.3 Three boroughs (Brent, Greenwich and Islington) and three of the divisions within Westminster (Belgravia, Paddington and Charing Cross) continue to show a year to date reduction in street crime offences.

Street crime judicial disposals

- 2.4 The December JD rate was 7.0%, against a target of 9%. This is lower than the rate seen over recent months and continues the gradual decline seen since June. The JD rate seen over the planning year to date (8.3%), however, remains an improvement over the 1999/2000 average rate of 7.7%. Thirteen boroughs are achieving the JD target over the rolling year, and fifteen over the nine months from April to December.

3. BURGLARY

Burglary offences

- 3.1 The level of burglary offences remains on course to achieve the 2% reduction target, with year to date performance showing a 9.9% reduction. In total, there were 9274 burglary offences during December 2000, compared to 10502 in December 1999. 23 boroughs are achieving the target over the nine months of the year-to-date.

Burglary judicial disposals

- 3.2 The overall MPS judicial disposal rate has reached 10.3% for the nine months from April to December, against a target of 10%. Recent months have seen a gradual fall in the JD rate since August, when the rate reached 11.3%. Whilst the burglary JD rate dropped below target in the individual months of November (9.6%) and December 2000 (9.3%), the target level had been achieved during each of the preceding six months, and again reflects an improvement on the average 1999/2000 performance of 9.2%.

4. AUTOCRIME

Autocrime offences

4.1 Autocrime offences year to date are running at a similar level to that in 1999/2000. There were 18098 autocrime offences in December 2000, compared with 16939 offences in December 1999. Autocrime offences tend to drop in the December of each year, and the level in December 2000 was the lowest in this planning year. The drop was not however as significant as that experienced in December 1999. At present seven boroughs are achieving the target of an 8% reduction over the nine months of the year to date.

Autocrime judicial disposals

4.2 JD rates are running at 4.4% over the year to date, against the MPS target of 8%. No borough is reaching the target level in the year to date.

5. DRUG CRIME

Drug judicial disposals

5.1. During the first nine months of 2000/2001, there were 1330 judicial disposals for supply and PWI to supply Class A drugs. This is 15% higher than the performance over the same months in 1998/1999 (baseline year). The number of JDs relating to all drugs has dropped over the same nine months, and is 13.5% lower than the 1998/1999 level.

5.2. Following an increase in JDs for supply and PWI to supply Class A drugs in November, the December total (135) fell back to a level similar to that seen in previous months. Operation Crackdown took place during the end of November on 10 boroughs. The November total of 182 JDs was higher than the monthly average seen during the planning year (148) and reflects some of the activity of the operation. The "Rat on a Rat" campaign for 2001 was launched on 15th January and will run for six weeks. The campaign targets drug dealers by encouraging calls to Crimestoppers by members of the public.

Drug offender referrals

5.3. The number of referrals for the first six months of the year was 868 (145 referrals in Sept 2000). Around 190 referrals are now needed per month if the target of 2000 referrals is to be reached by the planning year end.

6. EMERGENCY CALLS

999 Calls

6.1. The target of answering 999 calls within 15 seconds in 80% of cases has been achieved in each of the last four months and also over the planning year to date (80.5%). In December 91.3% of calls were answered within 15 seconds.

- 6.2.** The level of calls in December rose slightly over the previous month and was similar to that seen in September and October. This still however remains 16% lower than the level in May. The daily rate of calls answered within target time in December is higher than any month over the past year.

Immediate Incidents

- 6.3.** The percentage of immediate incidents arrived at within the target time of 12 minutes was 77.0% in December and 76.5% over the year to date. The December level is a slight improvement over previous months but remains below the standard of 80%.

7. DIVERSITY

Stop and Search

- 7.1.** The increase in the number of stop and searches seen in October has continued into November, with the daily average in the latter month being 15% higher than the average over the planning year to date (494 compared with a daily average of 428 during April – November 2000). Camden (an Operation Strongbox borough during October and November) showed a 36% rise over the same comparison period.
- 7.2.** The number of arrests resulting from stop and search has similarly risen, with the November total being the highest in this planning year. Arrest as a percentage of stop/searches, however, fell slightly. The arrest rate for white people in November was 15.2% against a year to date figure of 16.0%, whilst the arrest rate for minority ethnic people was 16.7% against a year to date figure of 17.0%.
- 7.3.** The revised MPS policy on Stop and Search is to be published shortly. The new guidelines set out minimum standards for senior managers, line supervisors, and officers conducting stop and search in relation to their responsibilities for the use of the tactic.

8. RESOURCES

Recruitment and retention

- 8.1.** The police strength at the end of December was 25,390, a shortfall of 362 on the Budget Workforce Target (BWT) shown for December, but 64 higher than the strength at the end of November. The police strength total excludes those officers on secondment to Essex, Hertfordshire and Surrey constabularies, however includes other secondments such as officers seconded to NCIS and other central service organisations.
- 8.2.** 4.06% (1031.5) of police strength are visible ethnic minority officers (target 5%), 15.7% are female (target 17%). Both of these figures have increased very slightly during December.

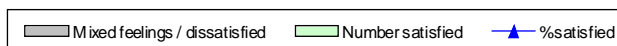
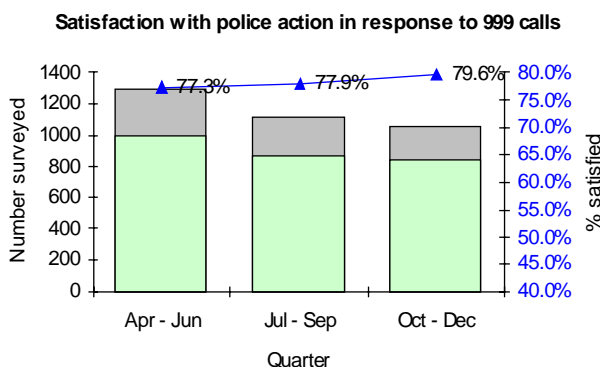
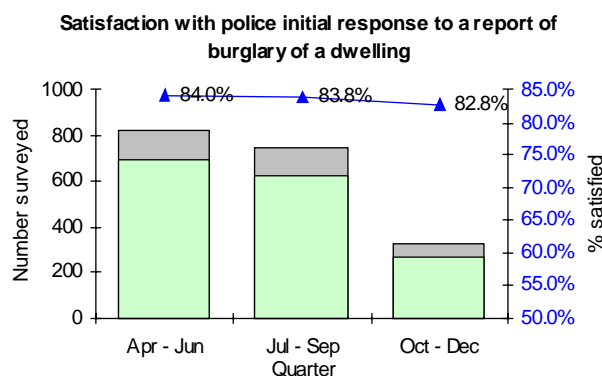
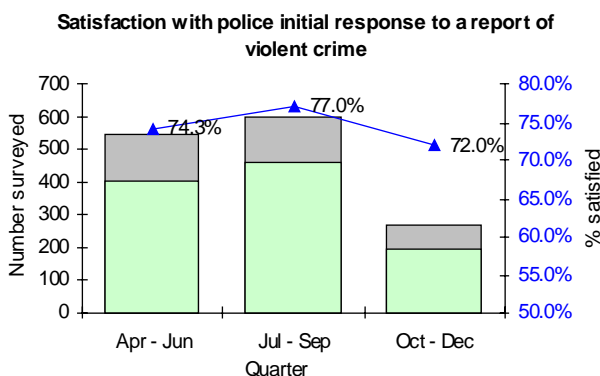
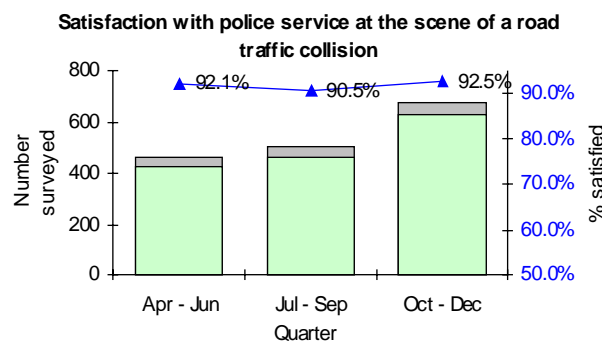
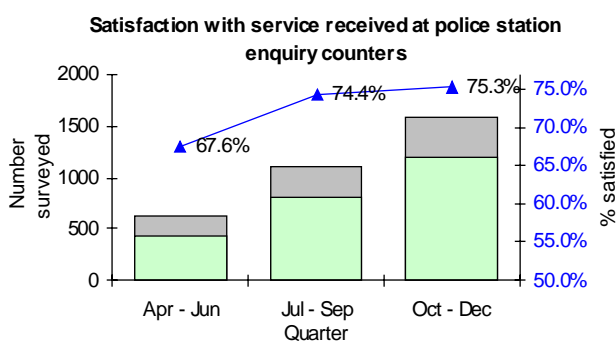
8.3. The civil staff strength at the end of December was 10,241. This is 869 (7.8%) short of the December BWT. Civil staff numbers fell by 50 during December. 15.6% of the civil staff are from visible ethnic minorities (a slight increase on the figure at the end of November) whilst 58.6% are female.

8.4. The traffic warden strength was 708 at the end of December, 26% short of the BWT (the same level as last month). 12.2% of traffic wardens are visible ethnic minority staff and 61.2% are female.

9. CUSTOMER SATISFACTION SURVEYS

9.1. The results from the customer satisfaction survey for the quarter Oct – Dec 2000 are available and are shown in the following charts. This shows some improvements in the percentages of customers satisfied with service received at station enquiry counters, at the scene of a collision, and in response to 999 calls.

9.2. There was a fall in satisfaction rates relating to the police initial response to the report of a violent crime, and report of burglary of a dwelling. It should be noted, however, that the sample size in relation to these surveys was lower than in previous quarters.



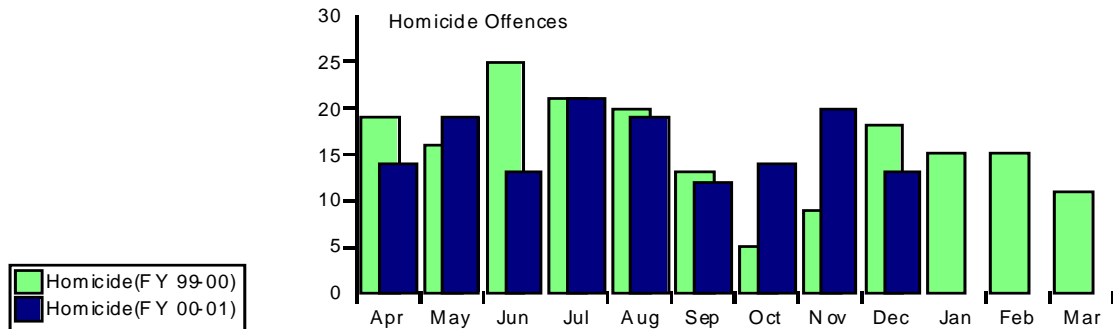
Metstats Charts

December 2000

Homicide
Street Crime
Burglary
Autocrime
Emergency Response
Drugs
Stop and Search

Performance Results - Homicide

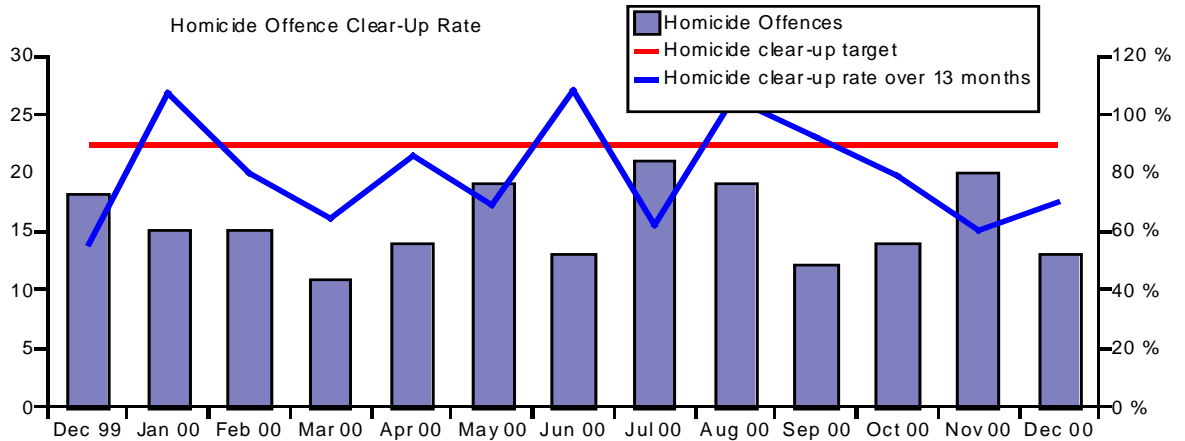
The figures for homicide reported below do not include offences or clear-ups for those parts of the former MPD now policed by county forces. Total homicides and clear-ups for the former MPD for fy99-00 are 191 and 146 respectively, giving a clear-up rate of 76.4%.



	Apr	May	Jun	Jul	Aug	Sep	Oct	Nov	Dec	Jan	Feb	Mar
Homicide(FY 99-00)	19	16	25	21	20	13	5	9	18	15	15	11
Homicides Cleared Up(FY 99-00)	12	15	14	12	15	13	8	9	10	16	12	7
Homicide(FY 00-01)	14	19	13	21	19	12	14	20	13			
Homicides Cleared Up(FY 00-01)	12	13	14	13	20	11	11	12	9			

	MPS	Figures financial year to date	MPS
Homicide(FY 99-00)	187	Homicide(FY 00-01)	145
Homicides Cleared Up(FY 99-00)	143	Homicides Cleared Up(FY 00-01)	115
Homicide Clear-up Rate	76.5 %	Homicide Clear-up rate to date	79.3 %

The homicide clear-up rate target is 89%

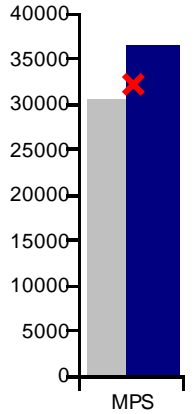


	Dec 99	Jan 00	Feb 00	Mar 00	Apr 00	May 00	Jun 00	Jul 00	Aug 00	Sep 00	Oct 00	Nov 00	Dec 00
Homicide Offences	18	15	15	11	14	19	13	21	19	12	14	20	13
Homicide Offences Cleared Up	10	16	12	7	12	13	14	13	20	11	11	12	9
Homicide clear-up rate	56 %	107 %	80 %	64 %	86 %	68 %	108 %	62 %	105 %	92 %	79 %	60 %	69 %

Performance Results - Volume Crime Analysis

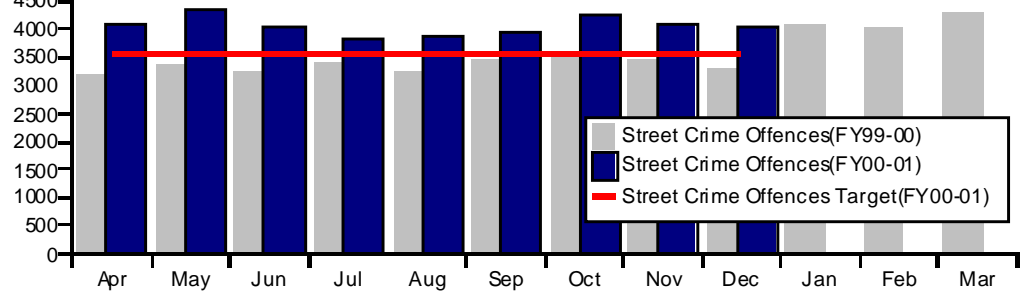
Street Crime

FYTD Street Crime offences against target



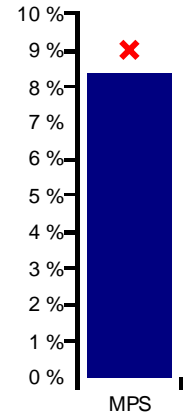
	MPS
Street Crime Offences(FY99-00)	30456
Street Crime Offences Target(FY00-01)	32178
Street Crime Offences(FY00-01)	36565

Street Crime offences against target



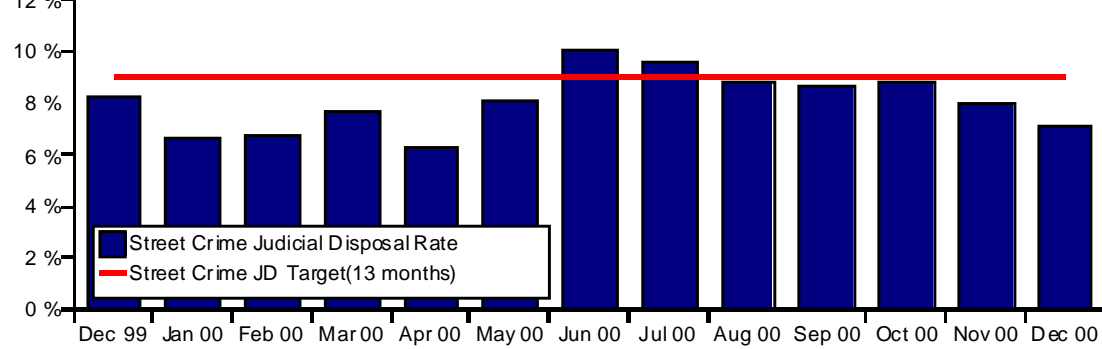
	Apr	May	Jun	Jul	Aug	Sep	Oct	Nov	Dec	Jan	Feb	Mar
Street Crime Offences(FY99-00)	3212	3369	3246	3441	3276	3483	3619	3488	3322	4110	4017	4321
Street Crime Offences Target(FY00-01)	3575	3575	3575	3575	3575	3575	3575	3575	3575			
Street Crime Offences(FY00-01)	4095	4345	4038	3855	3878	3933	4264	4107	4050			

FYTD Street Crime JD rate against target



	MPS
Street Crime JD Rate (FY00-01)	8.3%
Street Crime JD Target(FY00-01)	9.0%

Street Crime judicial disposal rate against target

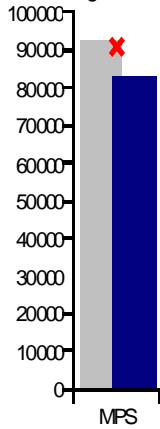


	Dec 99	Jan 00	Feb 00	Mar 00	Apr 00	May 00	Jun 00	Jul 00	Aug 00	Sep 00	Oct 00	Nov 00	Dec 00
Street Crime Judicial Disposal Rate	8.3%	6.6%	6.8%	7.7%	6.3%	8.1%	10.1%	9.6%	8.7%	8.6%	8.7%	8.0%	7.0%

Performance Results - Volume Crime Analysis

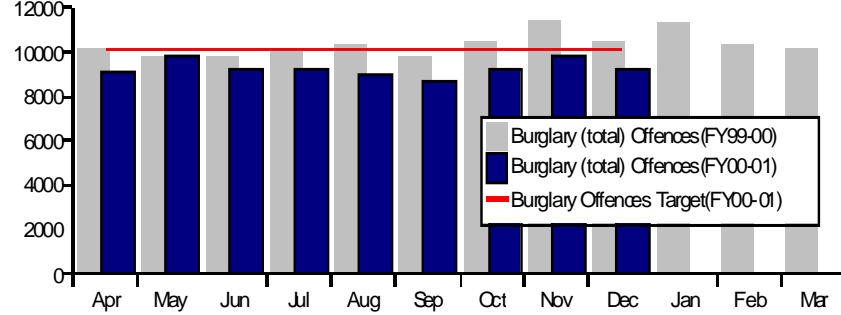
Burglary

FYTD Burglary offences against target



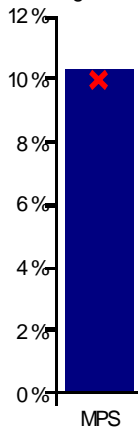
	MPS
Burglary (total) Offences(FYTD99-00)	92365
Burglary Offences Target(FYTD00-01)	91252
Burglary (total) Offences(FYTD00-01)	83244

Burglary offences against target



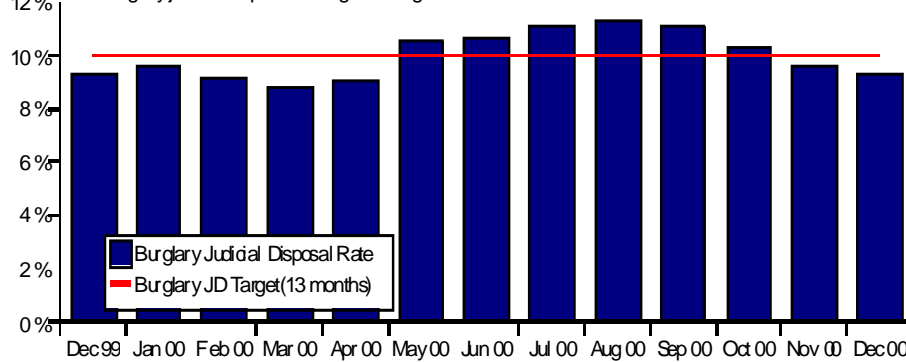
	Apr	May	Jun	Jul	Aug	Sep	Oct	Nov	Dec	Jan	Feb	Mar
Burglary (total) Offences(FY99-00)	10259	9851	9745	10024	10275	9826	10507	11376	10502	11311	10302	10174
Burglary Offences Target(FY00-01)	10139	10139	10139	10139	10139	10139	10139	10139	10139			
Burglary (total) Offences(FY00-01)	9128	9756	9207	9248	9001	8632	9213	9785	9274			

FYTD Burglary JD rate against target



	MPS
Burglary Judicial Disposal Rate (FYTD00-001)	10.3%
Burglary JD Target(FYTD00-01)	10.0%

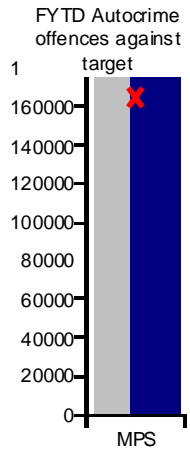
Burglary judicial disposal rate against target



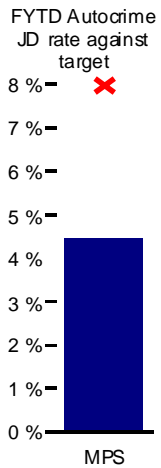
	Dec 99	Jan 00	Feb 00	Mar 00	Apr 00	May 00	Jun 00	Jul 00	Aug 00	Sep 00	Oct 00	Nov 00	Dec 00
Burglary Judicial Disposal Rate	9.2%	9.6%	9.2%	8.8%	9.0%	10.5%	10.7%	11.1%	11.3%	11.0%	10.3%	9.6%	9.3%

Performance Results - Volume Crime Analysis

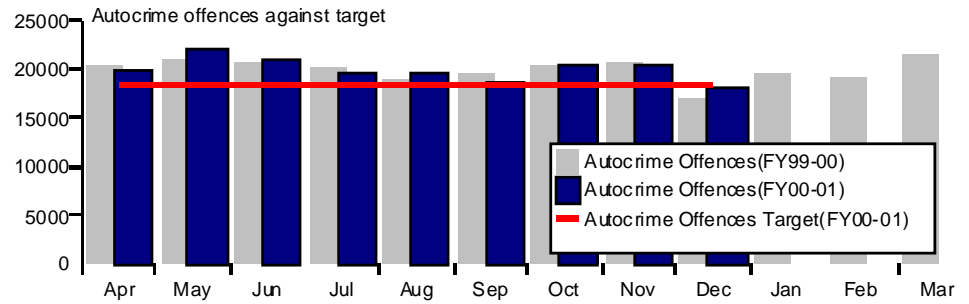
Autocrime



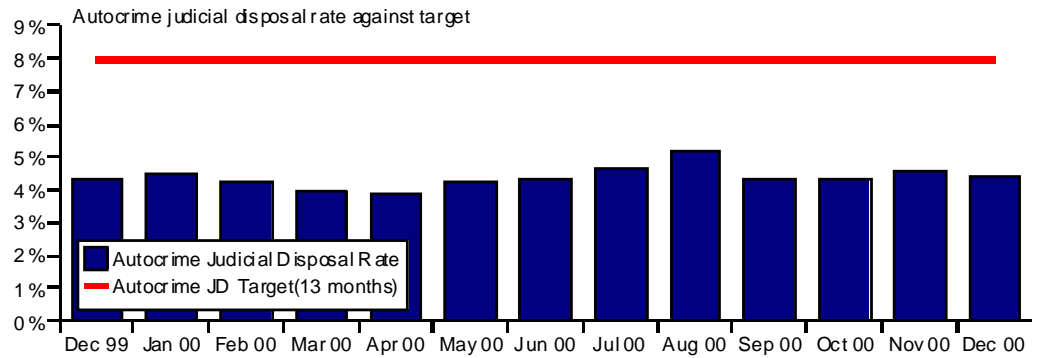
	MPS
Autocrime Offences(FYT D99-00)	178456
Autocrime Offences Target(FYTD00-01)	164847
Autocrime Offences(FYT D00-01)	179479



	MPS
Autocrime Judicial Disposal Rate (FYTD 00-01)	4.4 %
Autocrime JD Target(FYTD00-01)	8.0 %



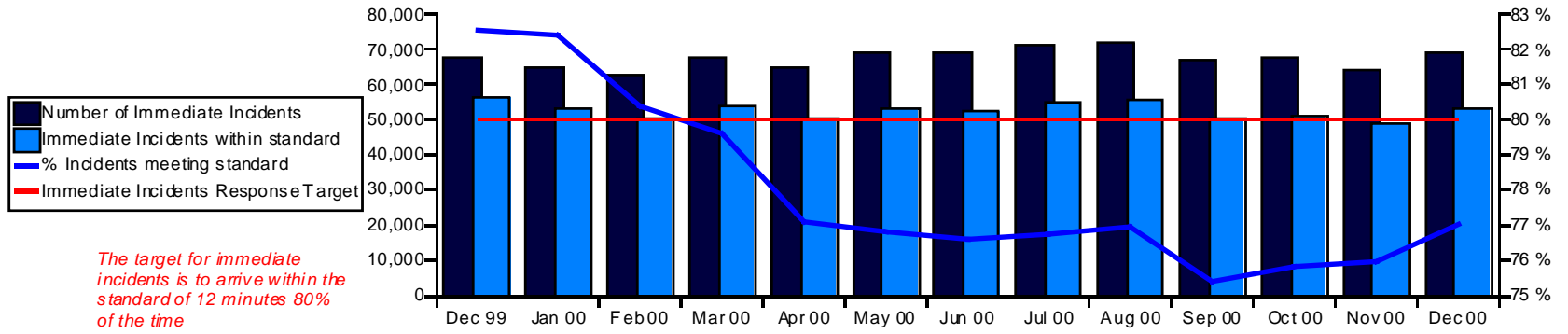
	Apr	May	Jun	Jul	Aug	Sep	Oct	Nov	Dec	Jan	Feb	Mar
Autocrime Offences (FY99-00)	20402	21102	20540	20151	18930	19403	20381	20608	16939	19607	19293	21552
Autocrime Offences Target (FY00-01)	18316	18316	18316	18316	18316	18316	18316	18316	18316			
Autocrime Offences (FY00-01)	19907	21979	20865	19532	19416	18740	20437	20505	18098			



Month	Autocrime Judicial Disposal Rate
Dec 99	4.3 %
Jan 00	4.5 %
Feb 00	4.2 %
Mar 00	3.9 %
Apr 00	3.9 %
May 00	4.3 %
Jun 00	4.3 %
Jul 00	4.7 %
Aug 00	5.2 %
Sep 00	4.3 %
Oct 00	4.3 %
Nov 00	4.6 %
Dec 00	4.4 %

Response to Emergency Calls

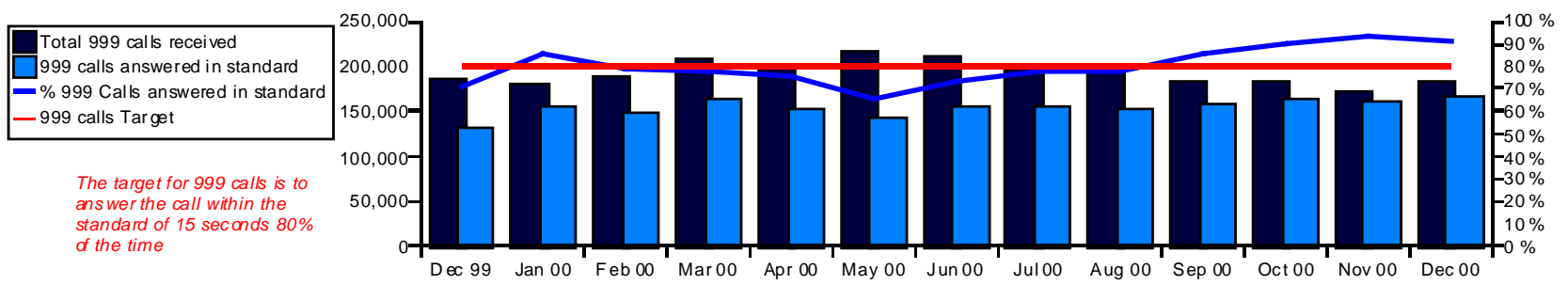
Response to Immediate Incidents



The target for immediate incidents is to arrive within the standard of 12 minutes 80% of the time

	Dec 99	Jan 00	Feb 00	Mar 00	Apr 00	May 00	Jun 00	Jul 00	Aug 00	Sep 00	Oct 00	Nov 00	Dec 00
Number of Immediate Incidents	67533	64392	62673	67822	64906	69197	68680	70966	71525	67095	67597	63960	68687
Immediate Incidents within standard	55738	53051	50385	53993	50034	53142	52582	54430	55017	50583	51221	48568	52909
% Incidents meeting standard	82.5 %	82.4 %	80.4 %	79.6 %	77.1 %	76.8 %	76.6 %	76.7 %	76.9 %	75.4 %	75.8 %	75.9 %	77.0 %

999 Calls



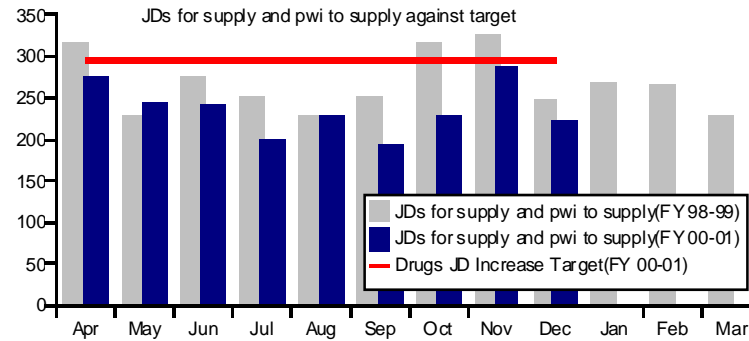
The target for 999 calls is to answer the call within the standard of 15 seconds 80% of the time

	Dec 99	Jan 00	Feb 00	Mar 00	Apr 00	May 00	Jun 00	Jul 00	Aug 00	Sep 00	Oct 00	Nov 00	Dec 00
Total 999 calls received	185772	179489	188658	208185	201510	217637	211640	198067	198087	182979	182256	171999	182595
999 calls answered within standard	131898	154361	149039	162384	153148	143070	154515	154454	153331	157307	164049	160346	166776
% 999 Calls answered in standard	71.0 %	86.0 %	79.0 %	78.0 %	76.0 %	65.7 %	73.0 %	78.0 %	77.4 %	86.0 %	90.0 %	93.2 %	91.3 %

Drug related crime

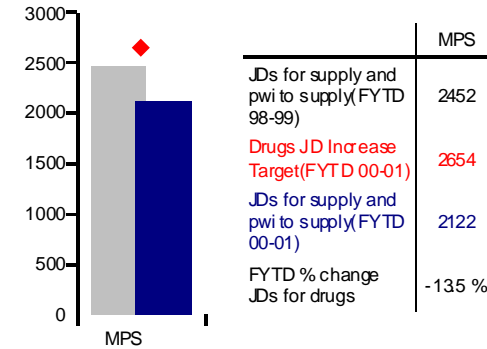
Judicial disposals for supply and PW against target

The monthly target for judicial disposals for supply and possession with intent to supply for 2000/1 is 295. This is based on a 10% increase on the 1998/1999 monthly average of 268

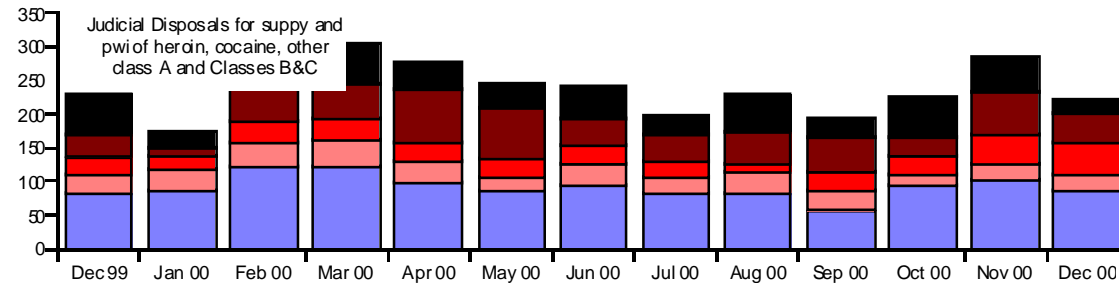
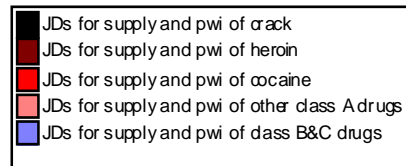


	Apr	May	Jun	Jul	Aug	Sep	Oct	Nov	Dec	Jan	Feb	Mar
JDs for supply and pwi to supply (FY 98-99)	317	228	275	253	229	253	318	329	250	269	265	231
JDs for supply and pwi to supply (FY 00-01)	276	245	241	199	230	194	228	286	223			

FYTD JDs for supply and pwi to supply against target



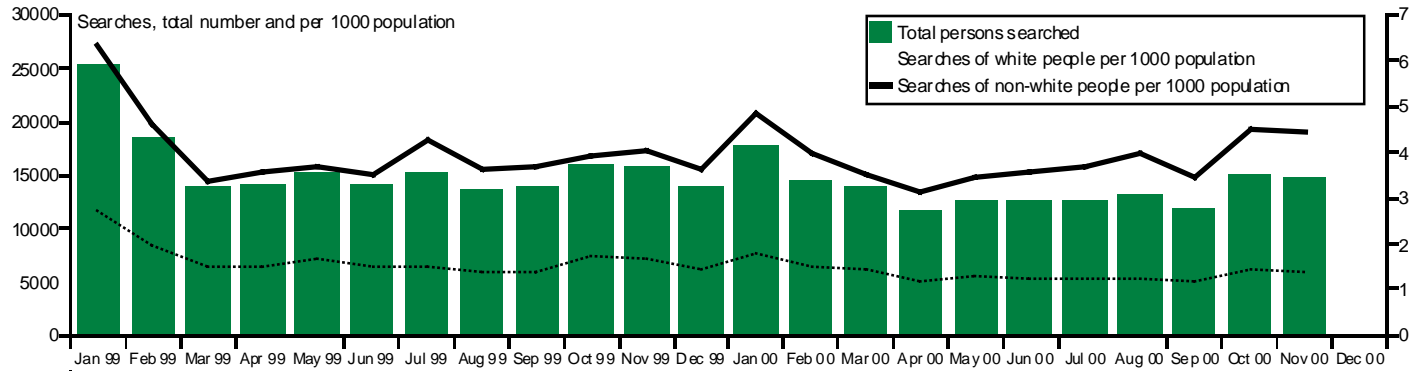
Judicial disposals for supply and PWI, showing drug types



	Dec 99	Jan 00	Feb 00	Mar 00	Apr 00	May 00	Jun 00	Jul 00	Aug 00	Sep 00	Oct 00	Nov 00	Dec 00
JDs for supply and pwi of crack	58	24	50	57	39	34	46	27	57	28	63	51	22
JDs for supply and pwi of heroin	34	14	102	52	79	77	39	40	47	51	27	65	44
JDs for supply and pwi of cocaine	26	18	32	33	26	26	28	25	12	28	25	44	44
JDs for supply and pwi of other class A drugs	27	32	35	40	32	22	34	24	30	29	18	22	25
JDs for supply and pwi of class B&C drugs	84	88	124	122	100	86	94	83	84	58	95	104	88

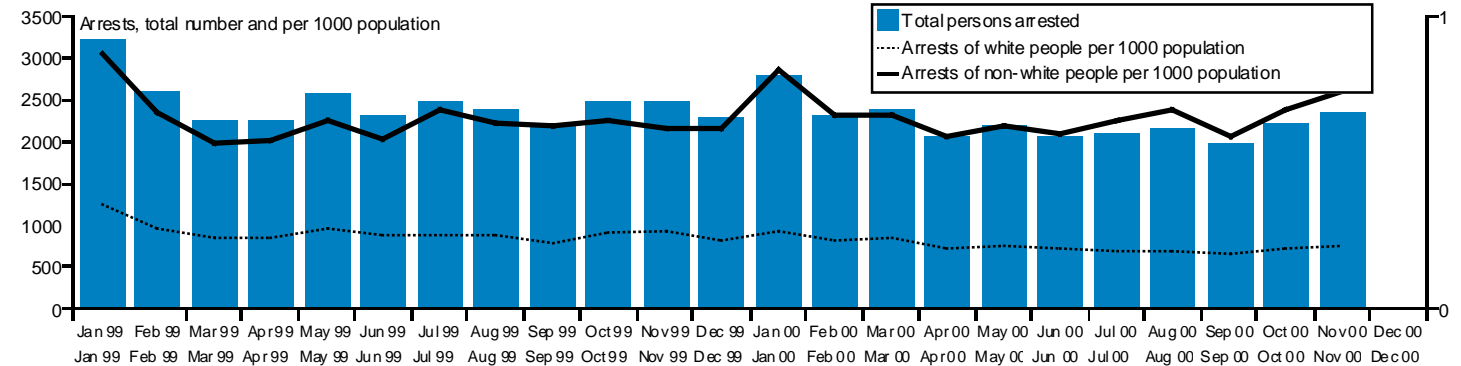
Performance Results - Diversity

Stop and Search



	Jan 99	Feb 99	Mar 99	Apr 99	May 99	Jun 99	Jul 99	Aug 99	Sep 99	Oct 99	Nov 99	Dec 99	Jan 00	Feb 00	Mar 00	Apr 00	May 00	Jun 00	Jul 00	Aug 00	Sep 00	Oct 00	Nov 00	Dec 00
Total persons searched	25439	18518	13958	14218	15282	14161	15311	13651	13754	16028	15948	13923	17836	14705	13936	11637	12677	12510	12683	13052	11892	15220	14820	
Searches of white people	15580	11429	8791	8736	9571	8787	8773	8003	8080	9909	9722	8325	10431	8610	8421	6844	7329	6973	7071	6899	6570	8269	8055	
Searches of non-white people	9239	6674	4845	5218	5384	5089	6191	5327	5372	5715	5835	5264	7013	5786	5158	4508	5062	5208	5348	5785	5038	6581	6440	
Searches of non-white people per 1000 population	6	5	3	4	4	4	4	4	4	4	4	4	5	4	4	3	3	4	4	4	3	5	4	
Searches of white people per 1000 population	3	2	2	2	2	2	2	1	1	2	2	1	2	2	1	1	1	1	1	1	1	1	1	

Arrests from Searches



	Jan 99	Feb 99	Mar 99	Apr 99	May 99	Jun 99	Jul 99	Aug 99	Sep 99	Oct 99	Nov 99	Dec 99	Jan 00	Feb 00	Mar 00	Apr 00	May 00	Jun 00	Jul 00	Aug 00	Sep 00	Oct 00	Nov 00	Dec 00
Total persons arrested	3400	2609	2271	2259	2559	2325	2492	2397	2238	2473	2493	2286	2782	2329	2390	2058	2206	2082	2108	2158	1983	2240	2349	
White people arrested	2054	1584	1403	1378	1580	1417	1426	1409	1281	1484	1528	1330	1537	1306	1370	1156	1227	1162	1128	1109	1067	1191	1222	
Non-white people arrested	1265	983	817	828	932	845	995	918	916	937	894	892	1183	959	958	856	916	875	935	987	859	987	1078	
Arrests of non-white people per 1000 population	0.9	0.7	0.6	0.6	0.6	0.6	0.7	0.6	0.6	0.6	0.6	0.6	0.8	0.7	0.7	0.6	0.6	0.6	0.6	0.7	0.6	0.7	0.7	
Arrests of white people per 1000 population	0.4	0.3	0.2	0.2	0.3	0.2	0.2	0.2	0.2	0.3	0.3	0.2	0.3	0.2	0.2	0.2	0.2	0.2	0.2	0.2	0.2	0.2	0.2	

Crime and Disorder						
Code	Indicator	Performance Target for 2000/2001	Actual Performance (December 2000)	Twelve month average or total to December 2000	Comments	Flag
Homicide Targets						
C1	The percentage of homicides cleared up	To achieve a clear up rate of 89%	69.2%	80.6%	December Figures: 13 offences, 9 clear ups	☹
Burglary Targets						
C2	The number of recorded burglaries (residential and commercial)	To reduce burglary by 2% (GOV)	-11.7%	-6.0%	Actual performance shows comparison with December 1999	☺
C3	The percentage of judicial disposals secured for recorded burglary offences.	To achieve a judicial disposal rate of 10%	9.3%	10.0%		☺
C4 (BVPI126)	Domestic burglaries per 1,000 households	2% reduction on 1999/2000 (i.e. 24.8 burglaries per 1000 households)	23.5	23.4	December data annualised to provide direct comparison with 12 month figure	☺
C5 (BVPI126)	Domestic burglaries - percentage detected.	10% Judicial Disposals	8.4%	9.4%		☺
C6 (BVPI155)	Percentage of domestic burglaries where the property had been burgled in the past twelve months.	This is a new PI, the absence of any historical data precludes the setting of a meaningful target this year			New PI, relevant data will not be available until Summer	♦
Street Crime Targets						
C7	The number of recorded street crimes	To achieve zero growth in street crime	21.9%	25.3%	Actual performance shows comparison with December 1999	☹
C8 (BVPI127)	Street Crimes per 1,000 population	0% reduction on 1999/2000 (i.e. to remain at 5.9 per 1000 population)	6.6	6.7	December data annualised to provide direct comparison with 12 month figure	☹
C9 (BVPI127)	Street Crimes - percentage detected.	9% Judicial Disposals	7.0%	8.0%		☹
Autocrime Targets						
C10	The number of recorded autocrime	To reduce autocrime by 8% (GOV)	6.8%	1.3%	Actual performance shows comparison with December 1999	☹
C11 (BVPI128)	Autocrimes per 1,000 population	8% reduction on 1999/2000 (i.e. 30.2 Autocrimes per 1000 population)	29.3	33.0	December data annualised to provide direct comparison with 12 month figure	☹
C12 (BVPI128)	The percentage of judicial disposals secured for recorded vehicle crime offences.	Judicial disposal rate of 8%	4.4%	4.4%		☹
Violent Crime Targets						
C13 (BVPI127)	Violent crimes per 1,000 population	No specific targets set in 2000/2001 Policing Plan	26.7	28.1	December data annualised to provide direct comparison with 12 month figure	
C14 (BVPI127)	Violent crimes - percentage detected (Judicial Disposals)	No specific targets set in 2000/2001 Policing Plan	15.2%	16.0%		
C15 (BVPI153)	Percentage of reported domestic violence incidents where there was a power of arrest, in which an arrest was made relating to the incident.	This is a new PI, the absence of any historical data precludes the setting of a meaningful target this year			New PI, relevant data not yet available	♦
C16 (BVPI154)	Percentage of victims of reported domestic violence incidents that were victims of a reported domestic violence incident in the previous twelve months.	Target to be determined			New PI, relevant data will not be available until Summer	♦
Drug Crime Targets						
C17	The number of judicial disposals for supply and possession with intent to supply	Increase judicial disposals for supply and possession with intent to supply by 10% against the baseline of 1998/9 (GOV)	-18.4%	-8.6%	Rolling year to December 2000 compared with 1998/9 baseline	☹
C17 A	The number of judicial disposals for supply and possession with intent to supply for Cocaine	No specific target set	48.4%	-2.3%	Rolling year to December 2000 compared with 1998/9 baseline	☹
C17 A	The number of judicial disposals for supply and possession with intent to supply for Heroin	No specific target set	3.8%	27.7%	Rolling year to December 2000 compared with 1998/9 baseline	☺
C17 A	The number of judicial disposals for supply and possession with intent to supply for Crack	No specific target set	-41.1%	13.2%	Rolling year to December 2000 compared with 1998/9 baseline	☺

Code	Indicator	Performance Target for 2000/2001	Actual Performance (December 2000)	Twelve month average or total to December 2000	Comments	Flag
C17 A	The number of judicial disposals for supply and possession with intent to supply for class A	Increase judicial disposals for supply and possession with intent to supply by 10% against the baseline of 1998/9 (GOV)	1.4%	16.0%	Rolling year to December 2000 compared with 1998/9 baseline	😊
C18 (BVPI129)	Number of offenders dealt with for supply offences in respect of Class A drugs per 10,000 population.	This is a new PI, the absence of any historical data precludes the setting of a meaningful target this year			Data to be provided from Home Office sources	
C19 (BVPI137)	The percentage of offenders referred into treatment from arrest referral schemes	This is a new PI, the absence of any historical data precludes the setting of a meaningful target this year. The MPS target set to refer 2000 offenders into treatment from arrest referral schemes.		0.62%	Arrest referral schemes have been in place in all boroughs since 1 April, data relates to Apr to Sept-00 only. 868 offenders referred into treatment.	😐
Total Crime						
C20 (BVPI125)	Total recorded crimes per 1,000 population	No specific target in Policing Plan as initiatives relate to specific offences, however, it is anticipated that these will lead to a 2.8% reduction in the 1999/2000 figure of 141.6 crimes per 1000 population (i.e. 135.8)	124.0	138.5	December data annualised to provide direct comparison with 12 month figure	😐
C21 (BVPI125)	Total recorded crimes - percentage detected (judicial disposals).	No target shown in the 2000/2001 performance plan for TNO's, targets set for specific offences.	12.0%	12.1%		
Disorder						
C22 (BVPI130)	Number of public disorder incidents per 1,000 population.	No target set at MPS level (it is anticipated that targets will be set at a borough level as part of local Crime and Disorder strategies)	56.2	58.6		
Arrests						
C23 (BVPI136)	Percentage of persons arrested for notifiable offences who were charged/reported for summons or cautioned.	This is a new PI, the absence of any historical data precludes the setting of a meaningful target this year			Relevant data not yet available	
Diversity						
Victim Satisfaction						
D1	The gap between the levels of satisfaction in the service received from police expressed by victims of racially motivated crime and victims of all crime	To achieve parity in the level of satisfaction recorded amongst victims of racially motivated crime and the victims of other crimes	12.3%	8.4%	New indicator, actual performance relates to July to September 2000 quarter only. 12 month data relates to April to September 2000.	😐
Crime						
D2 (BVPI141)	The percentage of reported racist incidents where further investigation is taken	To investigate 100% of cases	100.0%	100.0%	It is MPS policy to investigate all racist incidents	😊
D3 (BVPI141)	The percentage of reported racially aggravated crimes detected	No target shown in 2000/2001 Performance Plan	33.2%	26.2%		
D4	The number of racial offences	Target setting is inappropriate at this stage, as several initiatives impacting upon the number of offences reported are in their infancy.	15012	19080	Current month's data has been annualised to provide a comparison with the 12 month figure, most recent data relates to December	
D5	The number of racist incidents reported	It should be possible to set robust targets in the future, once the impact of these initiatives has been assessed over a longer period of time.	16660	21445	Current month's data has been annualised to provide a comparison with the 12 month figure, most recent data relates to December	
D6	The percentage of judicial disposals secured for recorded racially motivated offences	To achieve a disposal rate of 15%	14.5%	15.7%	Most recent data relates to December	😊
D7	The number of proactive initiatives aimed at the detection or disruption of offenders for race and hate crime	To undertake at least 250 proactive initiatives during 2000/01	67	143	12 month data relates to April to September only. Actual performance relates to July to September	😐
Recruitment						
D8 (BVPI25a)	Percentage of minority ethnic community police officers in the force	5% in current year (10.3% in five years and 25% in ten years) (GOV)	4.06%	3.97%	Using figures to December 2000	😐

Code	Indicator	Performance Target for 2000/2001	Actual Performance (December 2000)	Twelve month average or total to December 2000	Comments	Flag
D9 (BVPI25b)	Percentage of minority ethnic police officers in the force compared to the percentage of minority ethnic population of working age				Further work with the Home Office is needed to clarify the population base and develop a suitable way of expressing it.	
Stop and Search						
D10 (BVPI138)	Number of Police and Criminal Evidence Act (PACE) stops or searches of white persons per 1,000 population	No target set	16.9	15.7	Actual performance relates to November (annualised to provide direct comparison with 12 month figure) , 12 month figure relates to the year to November	
D11 (BVPI138)	Percentage of Police and Criminal Evidence Act (PACE) stops or searches of white persons leading to arrest.	No target set	15.2%	15.8%	December data not yet available, most recent data relates to November	
D12 (BVPI139)	Number of PACE stops or searches of minority ethnic persons per 1,000 population	No target set	53.2	45.7	Actual performance relates to November (annualised to provide direct comparison with 12 month figure) , 12 month figure relates to the year to November	
D13 (BVPI139)	Percentage of PACE stops or searches of minority ethnic persons leading to arrest.	No target set	16.7%	17.1%	December data not yet available, most recent data relates to November	
Training						
D14	The percentage of London boroughs which have received borough based community and race relations training	To provide training for 50% of all London boroughs by the end of March 2001	21.2%		Training complete on seven boroughs and is currently in progress in seven others	☹
D14A	The percentage of staff which have received borough based community and race relations training	To provide training for 40% of identified staff by the end of March 2001	25.4%		To date 9395 staff have been trained. Of this total 6242 borough staff have been trained.	☺
Response						
Response to Emergencies						
R1 (BVPI133)	Percentage of responses to incidents requiring immediate response within local target response times	80%	77.0%	77.5%		☹
R2 (BVPI134)	Percentage of 999 calls answered within local target response time.	80%	91.3%	80.6%		☺
Police Collisions						
R3	The total number of Police collisions	To achieve a 10% reduction on the 1998/9 figure of 5947 collisions (i.e. 5352 collisions)	4345	5979	December data has been annualised to allow for comparison with the twelve months to December	☹
R4	The percentage of Police collisions where police driving was a contributory factor as determined by the investigating officer	To achieve a 10% reduction in the 1998/9 percentage of 41.8% of collisions where police driving was a contributory factor (i.e. 37.6% of collisions)	36.6%	35.2%	Actual performance refers to December, 12 month performance relates to the period January to December 2000	☺
R5	The number of Police collisions occurring while responding to emergency calls per 1,000 emergency calls	To achieve a 10% reduction on the 1998/9 figure of 2.23 collisions per 1000 emergency calls (i.e. 2.00 collisions per 1000)	1.35	1.63	Actual performance refers to December, 12 month performance relates to the period January to December 2000	☺
R6	The number of Police collisions occurring while responding to emergency calls where police driving was a contributory factor, as determined by the investigating officer, per 1,000 emergency calls	To achieve a 10% reduction on the 1998/9 figure of 0.94 collisions per 1000 emergency calls where police driving was a contributory factor (i.e. 0.84 collisions per 1000)	0.45	0.55	Actual performance refers to December, 12 month performance relates to the period January to December 2000	☺
R7	The number of Police collisions resulting in personal injury	To achieve a 10% reduction on the 1998/9 figure of 978 collisions resulting in personal injury (i.e. 880 collisions)	683	856	Actual performance refers to December, 12 month performance relates to the period January to December 2000	☺
R8	The number of Police collisions resulting in personal injury as a percentage of total collisions	To achieve a 10% reduction in the 1998/9 percentage of 16.3% of collisions resulting in personal injury (i.e. 14.7% of collisions)	15.7%	14.3%	Actual performance refers to December, 12 month performance relates to the period January to December 2000	☺
Road Traffic Collisions						

Code	Indicator	Performance Target for 2000/2001	Actual Performance (December 2000)	Twelve month average or total to December 2000	Comments	Flag
R9 (BVPI132)	Number of road traffic collisions involving death or serious injury per 1,000 population.	4% reduction on 1994/8 baseline (equivalent of 0.77 KSI's per 1000 population) (GOV)	0.73	0.76	Latest data is for October (12 month figure based on 12 months to October 2000)	☹

Human Resources						
H1 (BVPI24)	Percentage of police officer strength which is female.	17% in current year (<i>Target at present is only provisional</i>)	15.66%	15.55%	Using figures to December 2000	
H2 (BVPI25a)	Percentage of minority ethnic community police officers in the force	5% in current year (10.3% in five years and 25% in ten years) (GOV)	4.06%	3.97%	Using figures to December 2000	☹
H3 (BVPI25b)	Percentage of minority ethnic police officers in the force compared to the percentage of minority ethnic population of working age				Further work is needed to clarify this indicator and develop a suitable way of expressing it	
H4 (BVPI26)	Number of working days lost through sickness per police officer	9 days per year	10.5	10.0	October data not yet available, most recent data relates to 12 months to September 2000	☹
H5 (BVPI26)	Number of working days lost through sickness per civilian employee.	10 days per year	11.9	11.7	October data not yet available, most recent data relates to 12 months to September 2000	☹
H6 (BVPI27)	Percentage staff turnover of police officers.	5% (<i>target at present is only provisional</i>)	3.7%	5.7%	Most recent data relates to 12 months to December 2000	
H7 (BVPI27)	Percentage staff turnover civilian employees.	15% (<i>target at present is only provisional</i>)	11.1%	14.7%	Most recent data relates to 12 months to December 2000	
H8 (BVPI28)	Percentage of police officers in operational posts;	No target set (<i>benchmarking information</i>)	87.2		To be calculated once a year. Position as in March 2000	
H9 (BVPI28)	Percentage of police officers in operational support posts;	No target set (<i>benchmarking information</i>)	9.4		To be calculated once a year. Position as in March 2000	
H10 (BVPI28)	Percentage of police officers in organisational support posts.	No target set (<i>benchmarking information</i>)	3.4		To be calculated once a year. Position as in March 2000	
H11 (BVPI29)	Number of medical retirements of police officers as a percentage of all officer retirements;	33%	29.0%	30.7%	Most recent data relates to 12 months to December 2000	☺
H12 (BVPI29)	Number of medical retirements of civilian employees as a percentage of all civilian retirements.	33%	34.0%	32.4%	Most recent data relates to 12 months to December 2000	☺
H13	The total number police officers	25600	25389.9	25370.2	Average strength relates to April to December 2000 (i.e. strength since boundary changes)	☹

Complaints						
COM1 (BVPI21)	Number of complaints per 1,000 officers.	Target to be based on a 3 year development plan	176.7	231.7	December data annualised for comparison 12 month rolling data (to December 2000)	
COM2 (BVPI22)	Percentage of complaints substantiated.	Target not yet set (to be determined during 2000)	2.61%	1.98%	December data annualised for comparison 12 month rolling data (to December 2000)	
COM3 (BVPI151)	Percentage of complaints resolved informally.	Target to be determined	30.9%	30.0%	December data annualised for comparison 12 month rolling data (to December 2000)	
COM4 (BVPI140)	Number of substantiated complaints under Police Act 1996 by detainees per 1,000 people detained.	Target to be based on a 3 year development plan			No current data available	

Code	Indicator	Performance Target for 2000/2001	Actual Performance (December 2000)	Twelve month average or total to December 2000	Comments	Flag
Customer Satisfaction						
S1 (BVPI120)	Level of crime (using British Crime Survey).	This is a new PI, the absence of any historical data precludes the setting of a meaningful target this year			Indicator based on British Crime Survey, data not yet available	
S2 (BVPI121)	Fear of crime (using British Crime Survey).	This is a new PI, the absence of any historical data precludes the setting of a meaningful target this year			Indicator based on British Crime Survey, data not yet available	
S3 (BVPI122)	Feelings of public safety (using British Crime Survey).	This is a new PI, the absence of any historical data precludes the setting of a meaningful target this year			Indicator based on British Crime Survey, data not yet available	
S4 (BVPI123)	Public confidence in the criminal justice system or its component parts (using British Crime Survey).	This is a new PI, the absence of any historical data precludes the setting of a meaningful target this year			Indicator based on British Crime Survey, data not yet available	
S5 (BVPI23a)	Percentage of the public satisfied with police action in response to 999 calls	90%	79.6%	78.2%	Quarterly report, actual performance relates to the 4th quarter of 2000, 12 month figure relates to quarters 2,3 and 4 only due to the new format of the questionnaire	☹
S6 (BVPI23b)	Percentage of people satisfied with the service received at police station enquiry counters	80%	75.3%	73.5%	Quarterly report, actual performance relates to the 4th quarter of 2000, 12 month figure relates to quarters 2,3 and 4 only due to the new format of the questionnaire	☹
S7 (BVPI23c)	Percentage of victims satisfied with police initial response to a report of violent crime	90%	72.0%	75.0%	Quarterly report, actual performance relates to the 4th quarter of 2000, 12 month figure relates to quarters 2,3 and 4 only due to the new format of the questionnaire	☹
S8 (BVPI23d)	Percentage of victims satisfied with police initial response to a report of a burglary of a dwelling	90%	82.8%	83.7%	Quarterly report, actual performance relates to the 4th quarter of 2000, 12 month figure relates to quarters 2,3 and 4 only due to the new format of the questionnaire	☹
S9 (BVPI23e)	Percentage of victims of road traffic collisions satisfied with the police service at the scene of the collision	90%	92.5%	91.8%	Quarterly report, actual performance relates to the 4th quarter of 2000, 12 month figure relates to quarters 2,3 and 4 only due to the new format of the questionnaire	☺
Youth Offending						
Y3	The number of truancy initiatives conducted on each borough.	Each borough identified by the DfEE as having a high incidence of truancy to undertake (preferably in partnership with the local authority) one initiative, for the minimum of one day, each school term.	28		There has been 28 initiatives in the 11 of the 12 designated boroughs during the Autumn term	☹
Y4	The extent to which the MPS meets the Government targets for the time taken to deal with persistent young offenders (PYO) from arrest to charge (Government target of 2 days).	To meet the Government targets in 70% of cases by the end of 2000 (GOV)	55.74%	53.90%	Monthly data is for December 2000.	☹
Y5	The extent to which the MPS meets the Government targets for the time taken to deal with persistent young offenders (PYO) from charge to first court listing (Government target of 7 days).	To meet the Government targets in 70% of cases by the end of 2000 (GOV)	57.38%	62.19%	Monthly data is for December 2000.	☹
Y6	Non-PYOs arrest to case disposal	Within 28 days from arrest to case disposal (standard set for 1999/2000 was to meet this target in 80% of cases, this target related to all young offenders including PYOs)	83.48%	81.48%	Monthly data is for December 2000.	☺

Code	Indicator	Performance Target for 2000/2001	Actual Performance (December 2000)	Twelve month average or total to December 2000	Comments	Flag
Y7	The time taken to notify the Police National Computer (PNC) of the results of the results of all young offender case disposals, including court sentencing.	Within 14 days or less of the case disposal or sentence in 80% of cases (1999/2000 target of 60% was achieved, target raised for 2000/1)	71.13%	68.43%	Monthly data is for December 2000. Rolling data covers April-December 2000	☹
Y8 (BVPI 131)	Percentage of all full youth files provided to the Crown Prosecution Service both within pre-trial issue time guidelines and which are fully satisfactory or sufficient to proceed;	Targets to be set with CPS as part of Joint Performance Management	66.5%	75.4%	Monthly data relates to November 2000. Annual data relates to data for period January - November 2000. Prior to this reporting methods were different.	
Y9 (BVPI 131)	Percentage of all expedited/remand youth files provided to the Crown Prosecution Service which are fully satisfactory or sufficient to proceed	Targets to be set with CPS as part of Joint Performance Management	99.0%	98.9%	Monthly data relates to November 2000. Annual data relates to data for period January - November 2000. Prior to this reporting methods were different.	

Miscellaneous						
M1 (BVPI19)	Has HMIC assessed the force as having achieved its efficiency target in the last year?			Yes		☺
M2 (BVPI20)	Annual estate running costs (excluding repairs and maintenance) per square metre.	No target set (<i>benchmarking information</i>)		£174		⚠
M3 (BVPI124)	Actual net revenue expenditure per 1,000 population.	No target set (<i>benchmarking information</i>)		£219,320		⚠
M4 (BVPI152)	Percentage of police authority buildings open to the public which are suitable for and accessible for disabled people.	68% (i.e. 130 out of 191 buildings in current year) (GOV)	45%		This figure now reflects the more stringent Part M compliance regulations	☹ ⚠
M5 (BVPI131)	Percentage of all full files provided to the Crown Prosecution Service both within pre-trial issue time guidelines and which are fully satisfactory or sufficient to proceed	Targets to be set with CPS as part of Joint Performance Management	61.7%	70.1%	Monthly data relates to November 2000. Annual data relates to data for period January - November 2000. Prior to this reporting methods were different.	
M6 (BVPI131)	Percentage of all expedited/remand files provided to the Crown Prosecution Service which are fully satisfactory or sufficient to proceed	Targets to be set with CPS as part of Joint Performance Management	98.6%	98.5%	Monthly data relates to November 2000. Annual data relates to data for period January - November 2000. Prior to this reporting methods were different.	

Key

(GOV) Indicates nationally set targets determined by the government.

This figure will not change as it is calculated annually

☺	Performance year to date indicates target likely to be met at year end	◆	New indicator, no data available yet
☹	Performance year to date indicates target unlikely to be met at year end	⚠	Information shown in Annex B of 2000/2001 Performance Plan
☺	Uncertain whether target will be met at year end	□	Most recent Data relates to 1st quarter of 2000
	No target set or awaits development		

NOTE: Latest mid-year estimate (1999) have been used as the population base